

Pittsfield Police Department CityStat

August 2014

Produced by the Crime Analysis Unit



Part I Total Crime

These past few months have seen a transition in crime trends for the City of Pittsfield (*Please see final page for visual depictions*).

From the beginning of this year, Property Crime rates have been consistently higher than they were last year. Over the past couple months, however, we have actually dropped below the number of Property Crimes for the same months last year, and have come closer than ever to the 5-Year average number of Property Crimes for the city.

We were also seeing consistently *fewer* Violent Crimes this year compared to last, but for the past three months, we have drastically surpassed the number of similar crimes committed in 2013.

4 Weeks

Year to Date

5 Year

	Jul-2014	Aug-2014	% Change	2013	2014	% Change	Average	% Change
Total Violent Crime	16	27	69%	79	100	27%	16	69%
Total Property Crime	126	133	6%	878	950	8%	130	2%
Total Part I Crime	142	160	13%	957	1050	10%	147	9%

Part I Property Crime

We started out the year showing a considerably higher rate of Property Crime occurring in the city compared to last year. Now we seem to be bridging the gap, as each month shows slightly less Property Crime being committed, comparatively. For example, in June, we had **19%** more Property Crimes compared to the same time last year. In July, we had **11%** more, and now, in August, we have only **8%** more. If things continue in this direction, we should show an overall lower total number of Property Crimes in 2014 than we had in 2013.

	4 Week			Year to Date			5 Year	
	Jul-2014	Aug-2014	% Change	2013	2014	% Change	Average	% Change
Burglary (B&E)	47	51	9%	302	317	5%	47	9%
Larceny (Total)	77	81	5%	547	609	11%	79	3%
Larceny from Building	9	19	111%	82	94	15%	13	46%
Larceny from Motor Vehicle	15	15	0%	75	97	29%	14	7%
Larceny from Person	1	1	0%	26	15	-42%	3	-67%
Shoplifting	5	16	220%	107	119	11%	8	100%
Larceny Misc.	47	30	-36%	257	284	11%	41	-27%
Motor Vehicle Theft	2	1	-50%	29	24	-17%	4	-75%
Total Property Crime	126	133	6%	878	950	8%	130	2%

Part I Violent Crime

Violent Crime rates for the month of August 2014 are the highest that they have been in the past 5 years. From the start of this year, Violent Crime rates have been *lower* than average, by as much as **82%**, from month to month. June was the first month this year to show a *higher* than average number of Violent Crimes, by **28%**. This month, we have an even higher disparity, with a number of crimes **69%** higher than average.

The specific crime that is affecting the Violent Crime rate so drastically is Aggravated Assault. For most of the year, we had numbers of these cases only ever as high as 10, and as low as 4, but for the past three months, the numbers have risen to 16, 23, and 27.

	4 Week			Year to Date			5 Year	
	Jul-2014	Aug-2014	% Change	2013	2014	% Change	Average	% Change
Homicide	0	0	IN CALC	0	0	IN CALC	0	IN CALC
Rape	1	2	100%	20	16	-20%	2	0%
Robbery	2	2	0%	17	24	41%	3	-33%
Aggravated Assault	13	20	54%	40	55	38%	10	100%
Arson	0	3	IN CALC	2	5	150%	1	200%
Total Violent Crime	16	27	69%	79	100	27%	16	69%

A Closer Look: Part I Property Crime

Stat Recap:

Since Last Month:

↑ 6%

Compared to 2013
Year-to-Date:

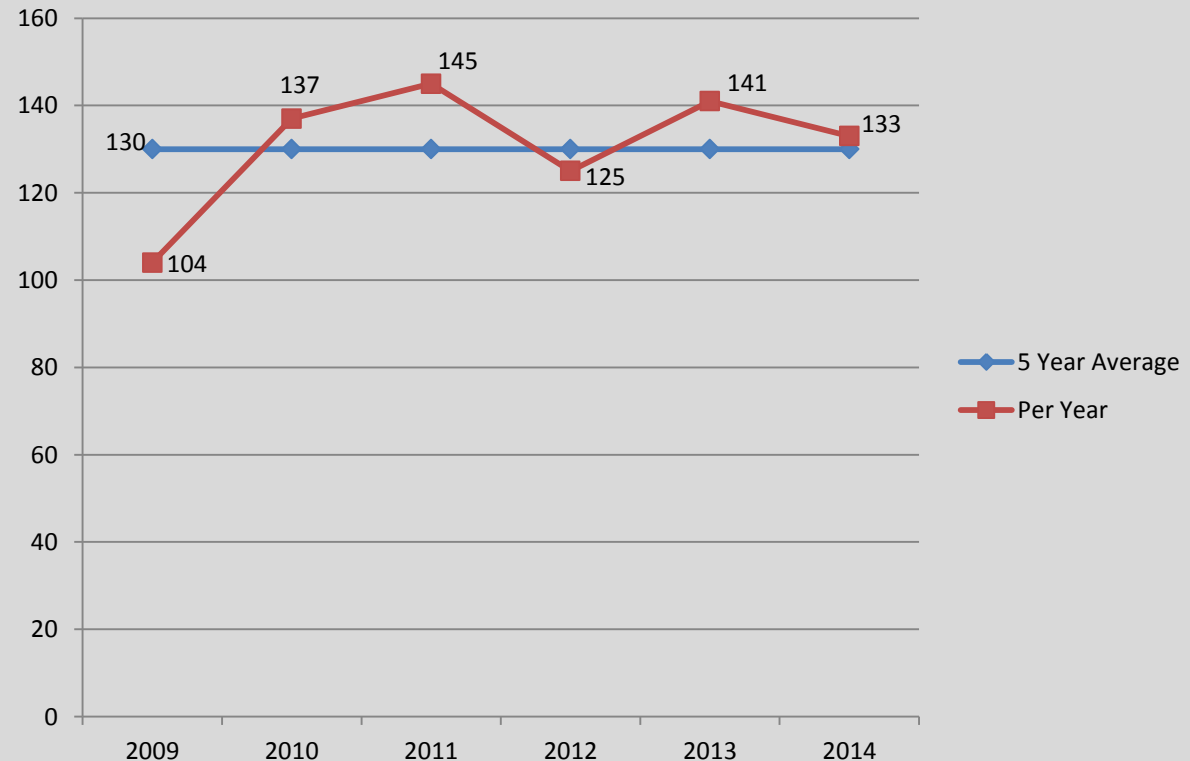
↑ 8%

Compared to 5 Year Avg:

↑ 2%

Month of August Numbers 2009-2014

PROPERTY CRIME



A Closer Look: Part I Violent Crime

Stat Recap:

Since Last Month:

↑ 69%

Compared to 2013
Year-To-Date:

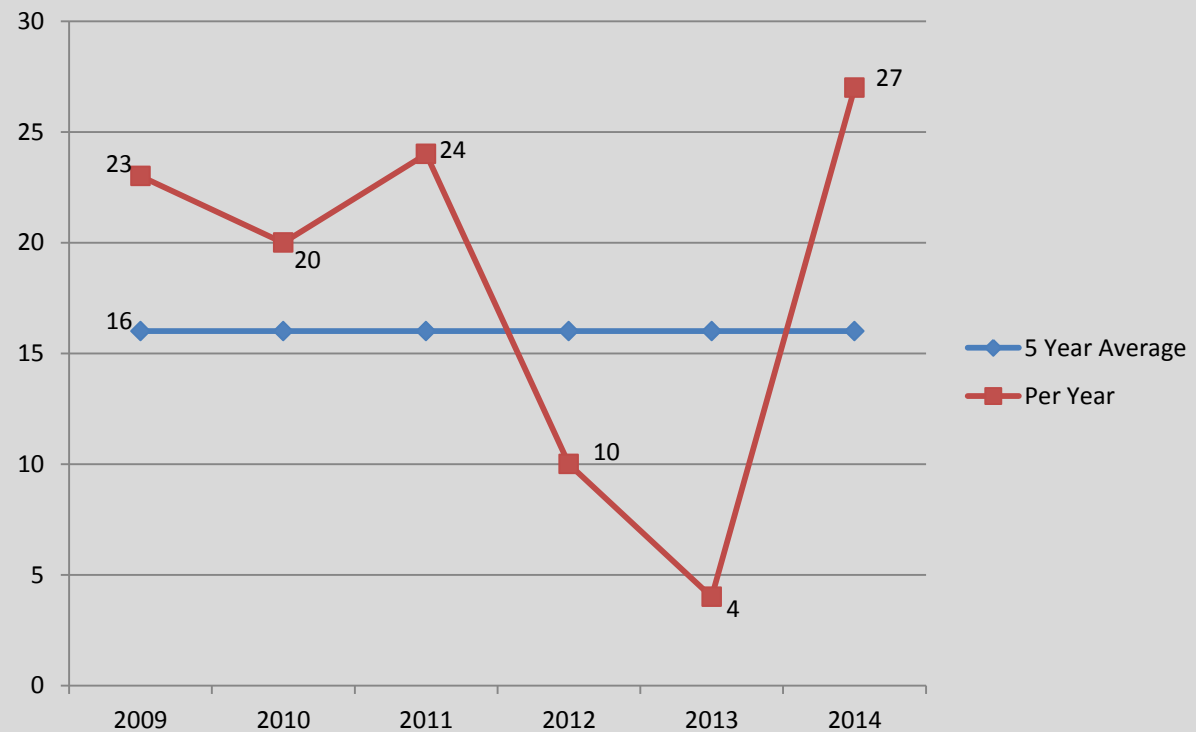
↑ 27%

Compared to 5 Year Avg:

↑ 69%

Month of August Numbers 2009–2014

VIOLENT CRIME



A Closer Look: AGGRAVATED ASSAULT

Stat Recap:

Since Last Month:

↑ 54%

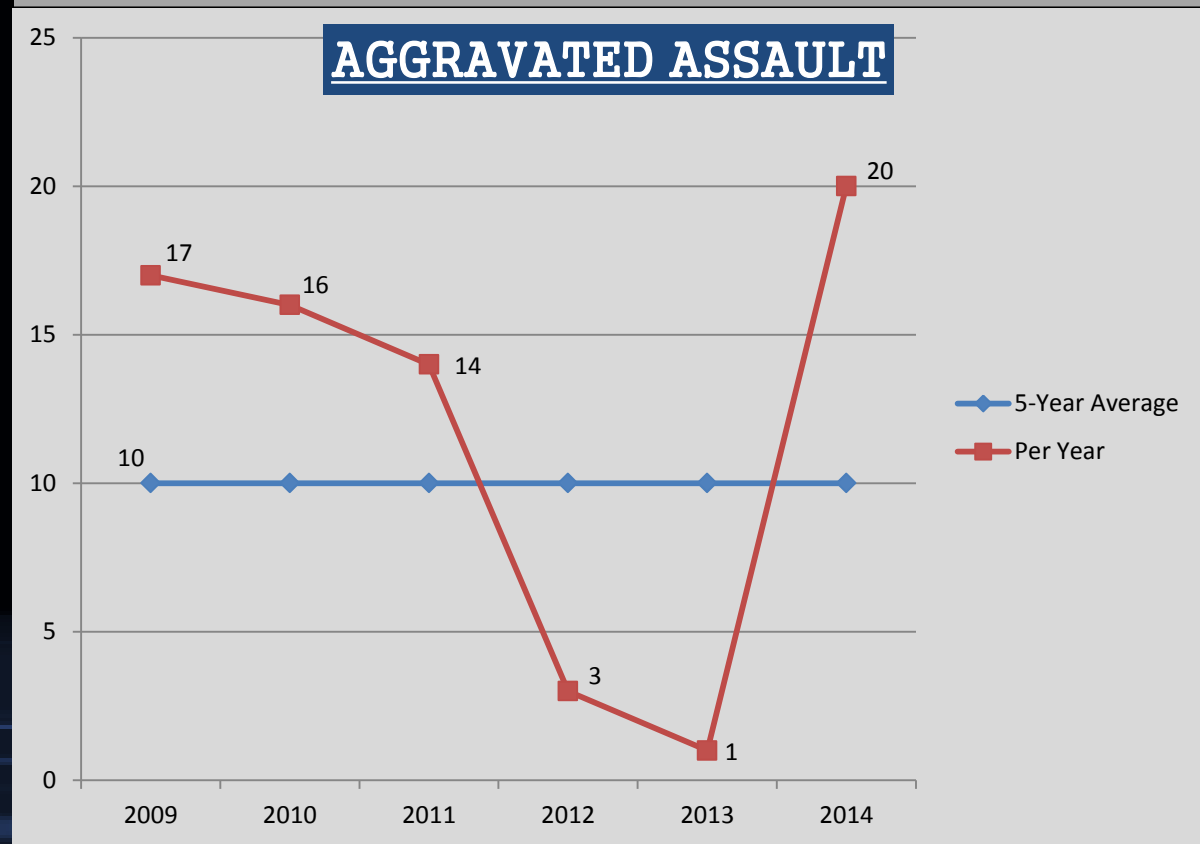
Compared to 2013
Year-To-Date:

↑ 38%

Compared to 5 Year Avg:

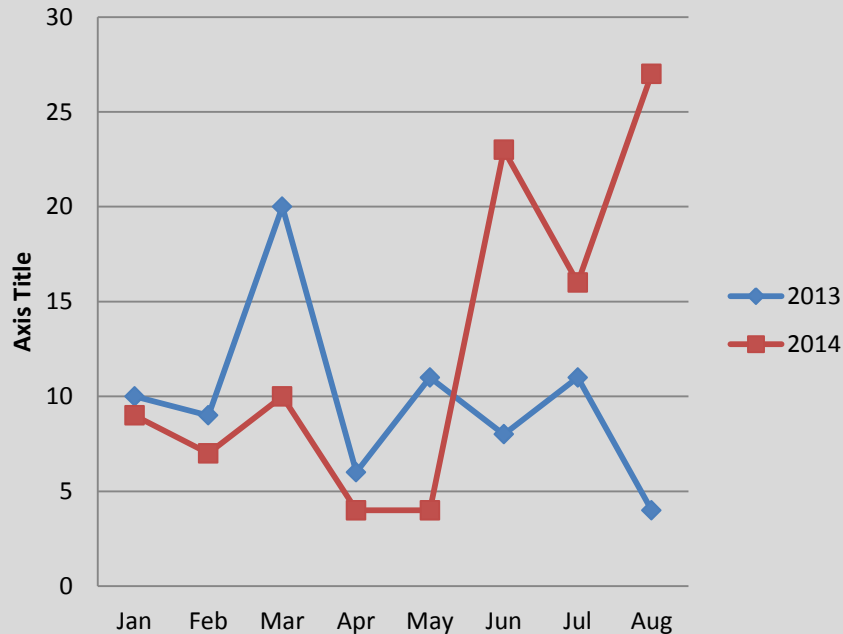
↑ 100%

Month of August Numbers 2009-2014

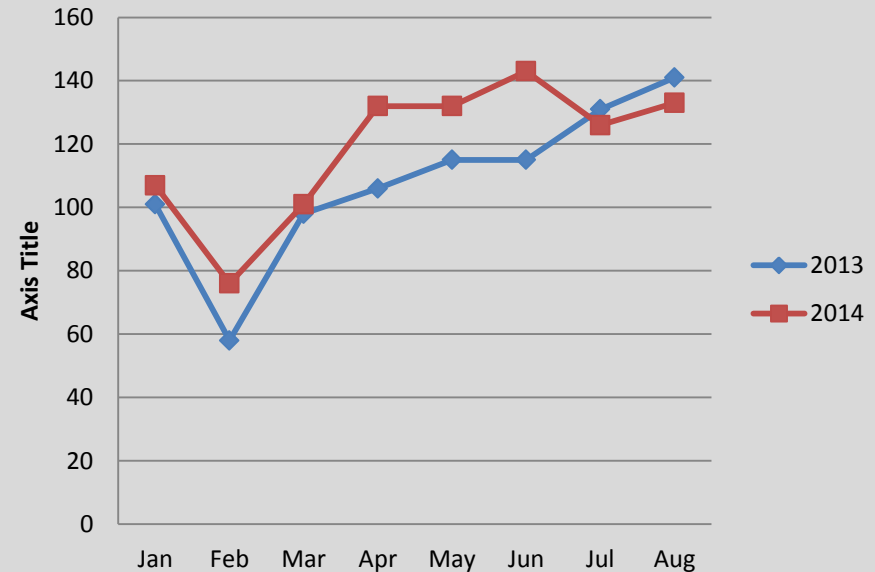


A Closer Look: CHANGING CRIME TRENDS

Violent Crime Comparison



Property Crime Comparison



The charts above help visualize the changing crime trends that we are starting to see in Pittsfield. While July and August this year are the first months in 2014 to show lower Property Crime rates than 2013, June, July, and August 2014 have shown drastically higher incidents of Violent Crime compared to the same months in 2013.