

Pittsfield Police Department CityStat

December 2014

Produced by the Crime Analysis Unit



Part I Total Crime

In this last month of 2014, we have the opportunity to see the difference in how we began the year compared to how we are now ending it.

In January of this year, we were already seeing a **5%** increase in Property Crimes compared to 2013; a rate that went as high as **19%** over as months went on. However, in July, the number of Property Crimes decreased so significantly that, by the end of the year, we are now **1%** lower in total Property Crimes than we were in 2013.

Unfortunately, the opposite can be seen with Violent Crimes. In January, we were **11%** below where we were last year, and got to as much as **39%** below last year's rates. In June, however, the number of Violent Crimes increased, so now we are seeing an **87%** increase compared to last year.

4 Weeks

Year to Date

5 Year

	Nov-2014	Dec-2014	% Change	2013	2014	% Change	Average	% Change
Total Violent Crime	21	24	14%	102	191	87%	11	118%
Total Property Crime	75	85	13%	1379	1370	-1%	96	-11%
Total Part I Crime	96	109	14%	1481	1561	5%	107	2%

Part I Property Crime

On average, Property Crime rates tend to drop **11%** from November to December. This year and last year, however, they've gone up a bit in that interval. That being said, in 2014, we are now **11%** below the average Property Crime rates for Pittsfield, and **37%** below the number of Property Crimes for December of last year.

Larceny rates rose to as much as **33%** higher than the same time in 2013 this year, but are now only **1%** higher. After a string of Burglaries this summer, Burglary cases got **10%** higher than they were last year, but now they are **4%** lower. Almost across the board, individual types of Property Crime have sunk to below average totals, which is something the city has not seen for almost the entire year.

	4 Week			Year to Date			5 Year	
	Nov-2014	Dec-2014	% Change	2013	2014	% Change	Average	% Change
Burglary (B&E)	24	27	13%	482	464	-4%	28	-4%
Larceny (Total)	48	55	15%	853	864	1%	65	-15%
Larceny from Building	7	5	-29%	132	124	-6%	10	-50%
Larceny from Motor Vehicle	2	9	350%	117	123	5%	9	0%
Larceny from Person	0	4	IN CALC	40	24	-40%	2	100%
Shoplifting	20	10	-50%	173	185	7%	10	0%
Larceny Misc.	19	27	42%	391	408	4%	34	-21%
Motor Vehicle Theft	3	3	0%	44	42	-5%	3	0%
Total Property Crime	75	85	13%	1379	1370	-1%	96	-11%

Part I Violent Crime

Aggravated Assault cases continue to inflate the city's Violent Crime totals. The low numbers we saw through most of last year and the first half of this year jumped to higher-than-average numbers in June, and continue to maintain totals in the 20s. Our year-to-date Aggravated Assault totals compared to 2013 were as much as **36%** less earlier this year, and have now surpassed 2013's total number of cases by **205%**.

Additionally, on average, the number of Violent Crimes goes down by **38%** from November to December. This year, it went up **14%**, resulting in a total number of Violent Crimes that was **118%** above average. If we had managed to maintain the average 7 Violent Crimes we saw for the first half of the year, our total would only be 83 cases for the whole year.

	4 Week			Year to Date			5 Year	
	Nov-2014	Dec-2014	% Change	2013	2014	% Change	Average	% Change
Homicide	0	0	IN CALC	0	0	IN CALC	0	IN CALC
Rape	2	2	0%	28	26	-7%	2	0%
Robbery	2	0	-100%	29	30	3%	1	-100%
Aggravated Assault	17	21	24%	42	128	205%	7	200%
Arson	0	1	IN CALC	3	7	133%	0	IN CALC
Total Violent Crime	21	24	14%	102	191	87%	11	118%

A Closer Look: Part I Property Crime

Stat Recap:

Since Last Month:

↑ 13%

Compared to 2013
Year-to-Date:

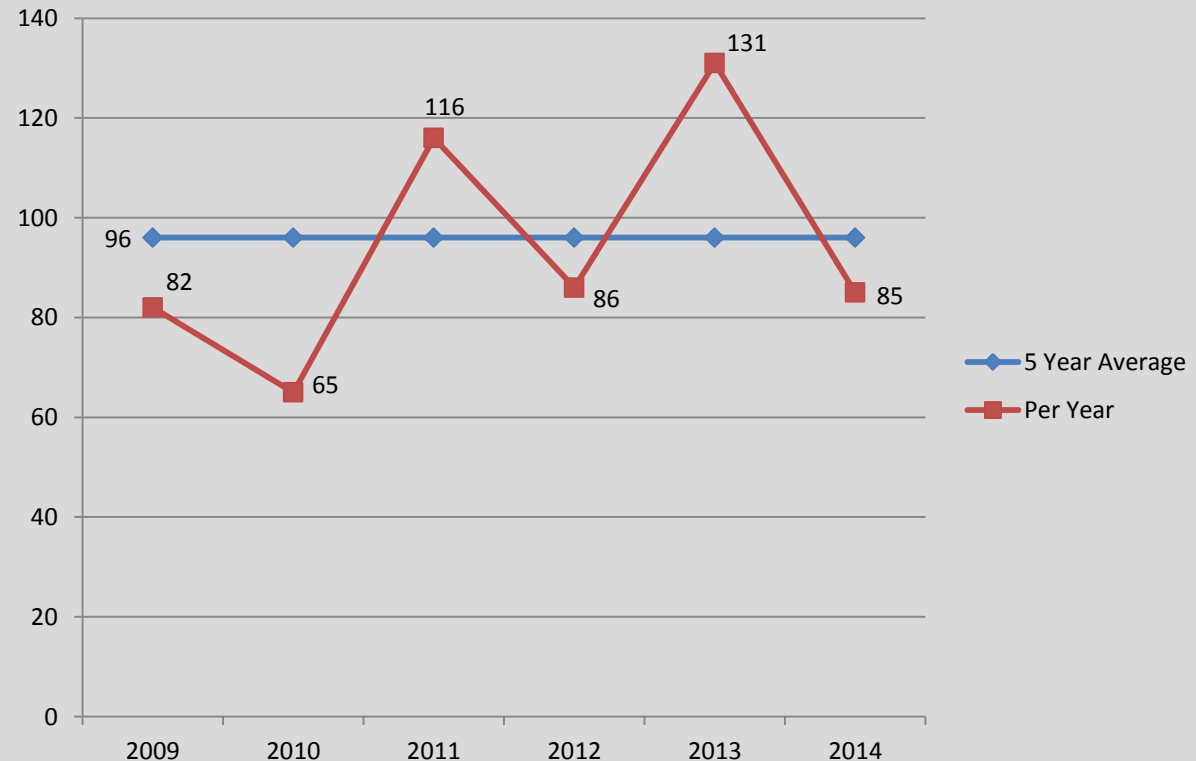
↓ 1%

Compared to 5 Year Avg:

↓ 11%

Month of December Numbers 2009-2014

PROPERTY CRIME



A Closer Look: Part I Violent Crime

Stat Recap:

Since Last Month:

↑ 14%

Compared to 2013
Year-To-Date:

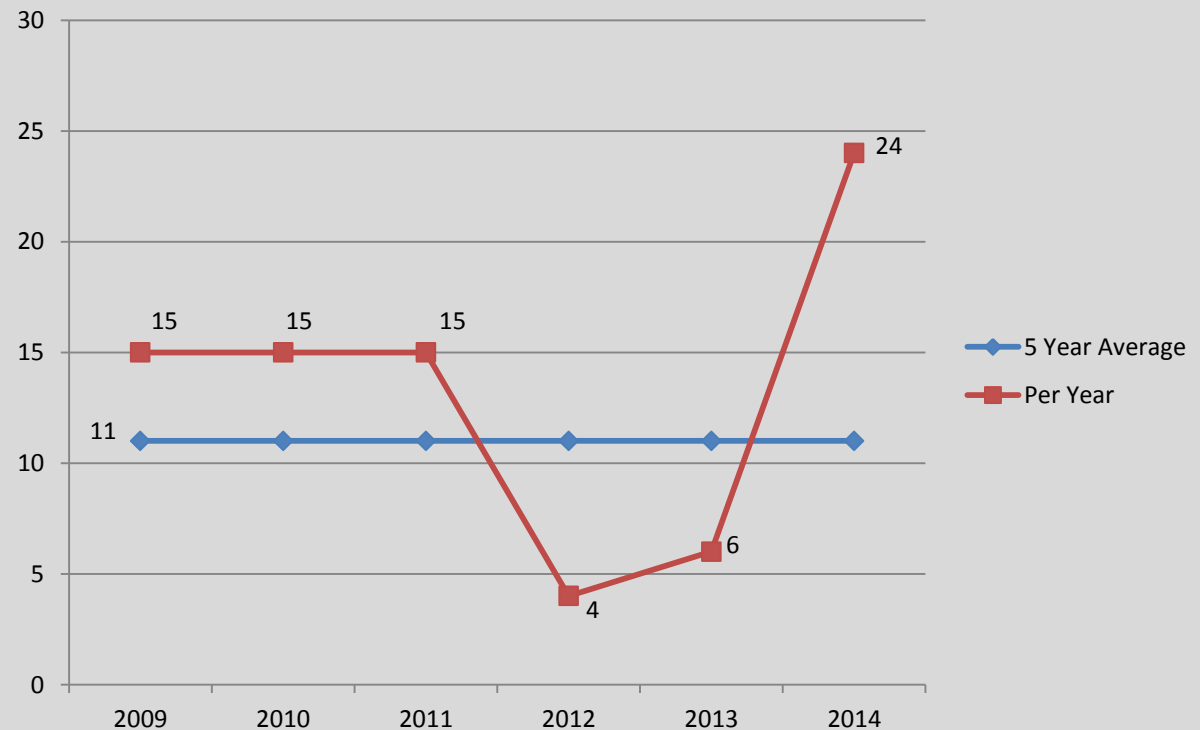
↑ 87%

Compared to 5 Year Avg:

↑ 118%

Month of December Numbers 2009–2014

VIOLENT CRIME



A Closer Look: Burglary

Stat Recap:

Since Last Month:

↑ 13%

Compared to 2013
Year-To-Date:

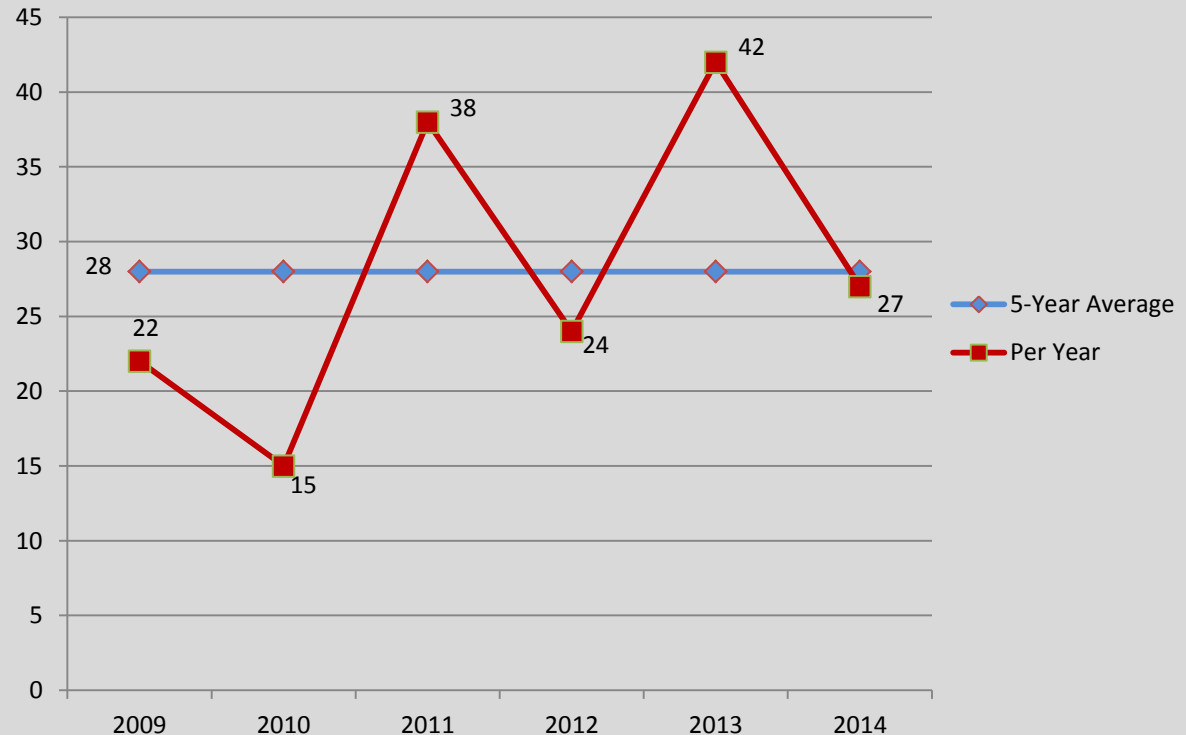
↓ 4%

Compared to 5 Year Avg:

↓ 4%

Month of December Numbers 2009–2014

BURGLARY



A Closer Look: Larceny

Stat Recap:

Since Last Month:

↑ 15%

Compared to 2013
Year-To-Date:

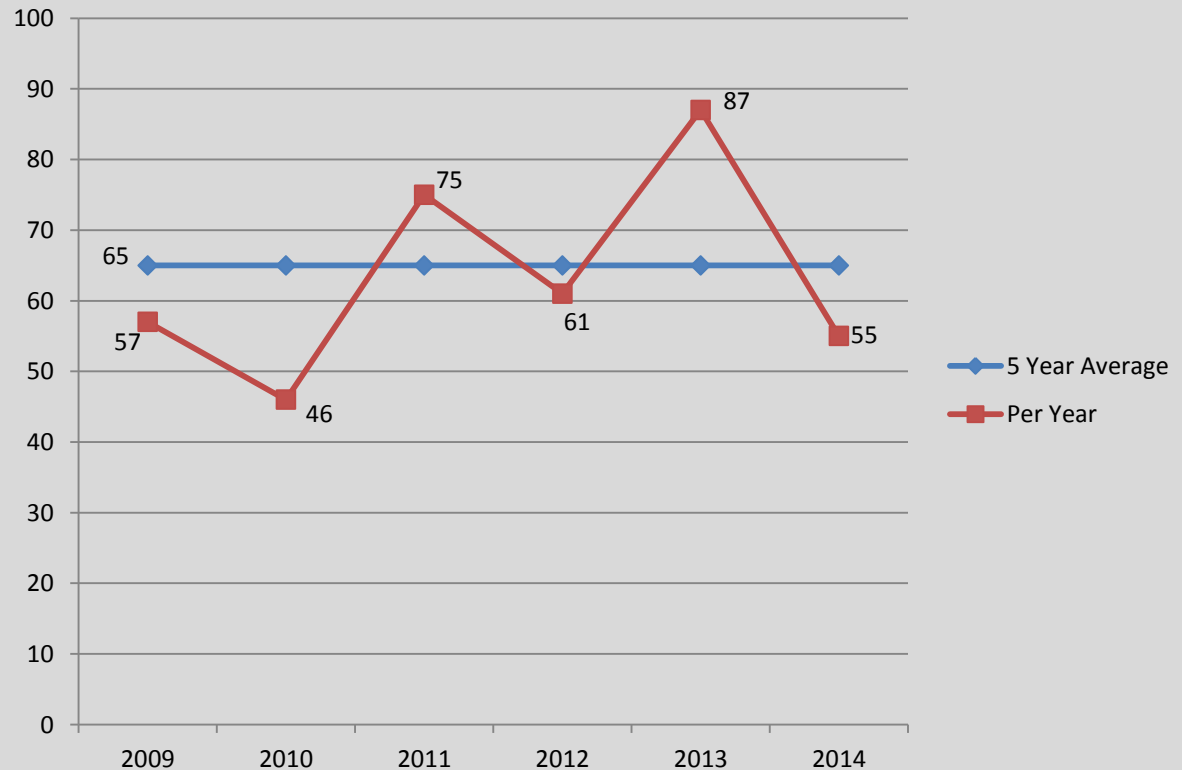
↑ 1%

Compared to 5 Year Avg:

↓ 15%

Month of December Numbers 2009-2014

LARCENY



A Closer Look: AGGRAVATED ASSAULT

Stat Recap:

Since Last Month:

↑ 24%

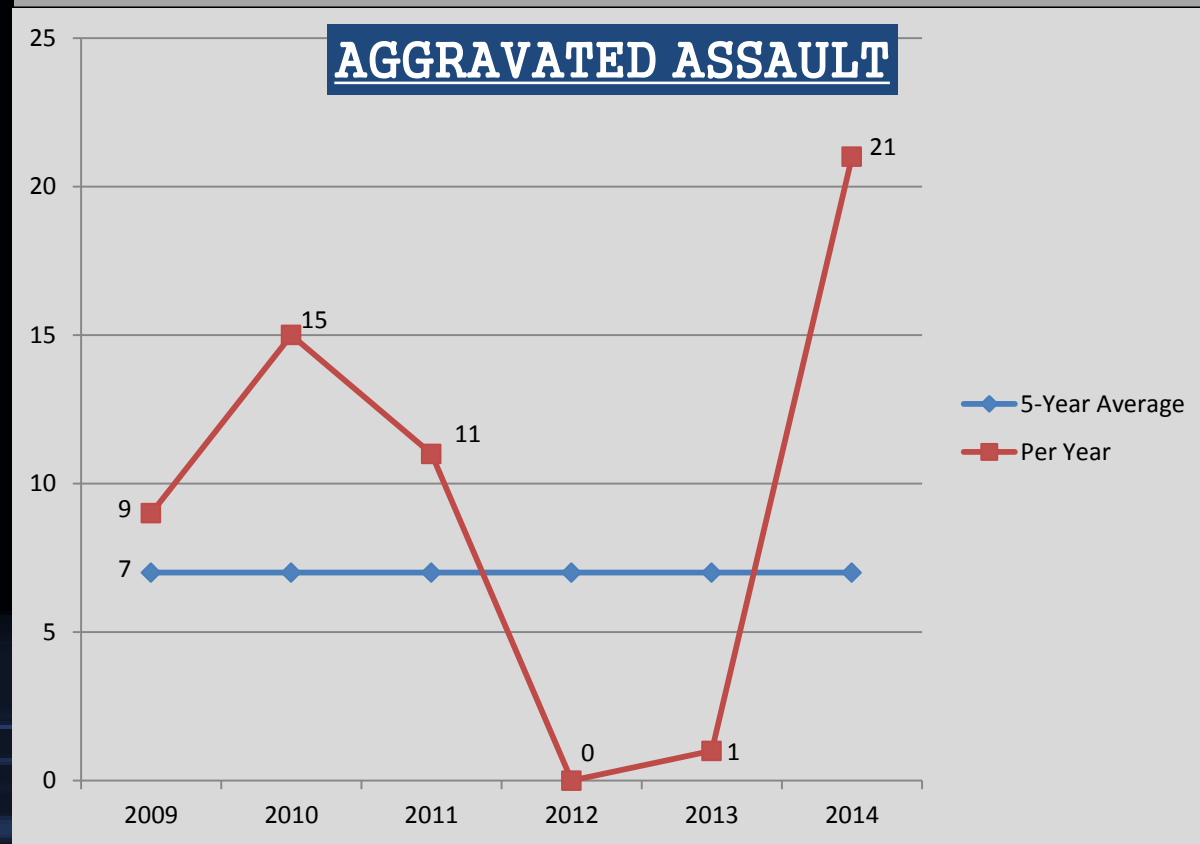
Compared to 2013
Year-To-Date:

↑ 205%

Compared to 5 Year Avg:

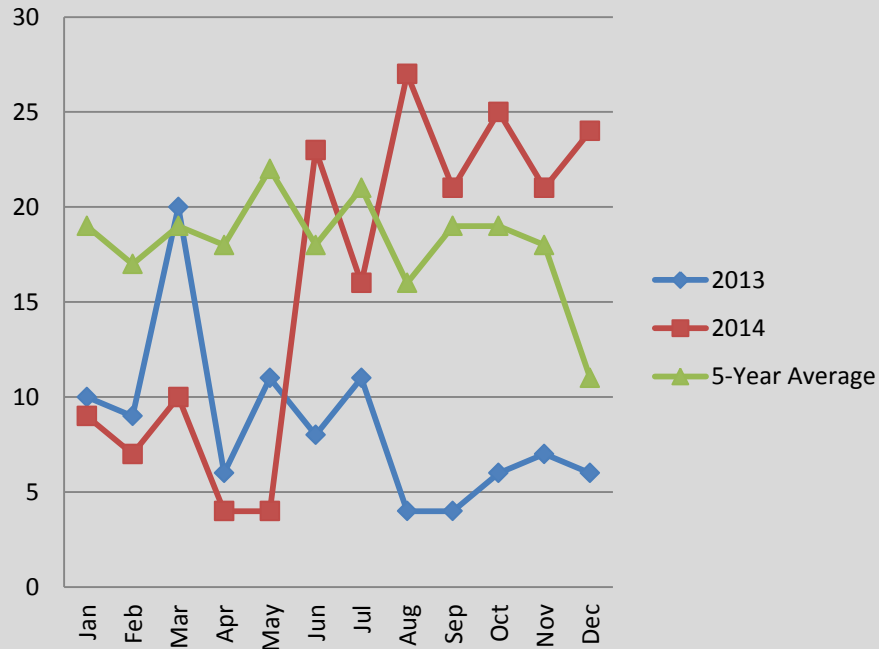
↑ 200%

Month of December Numbers 2009–2014

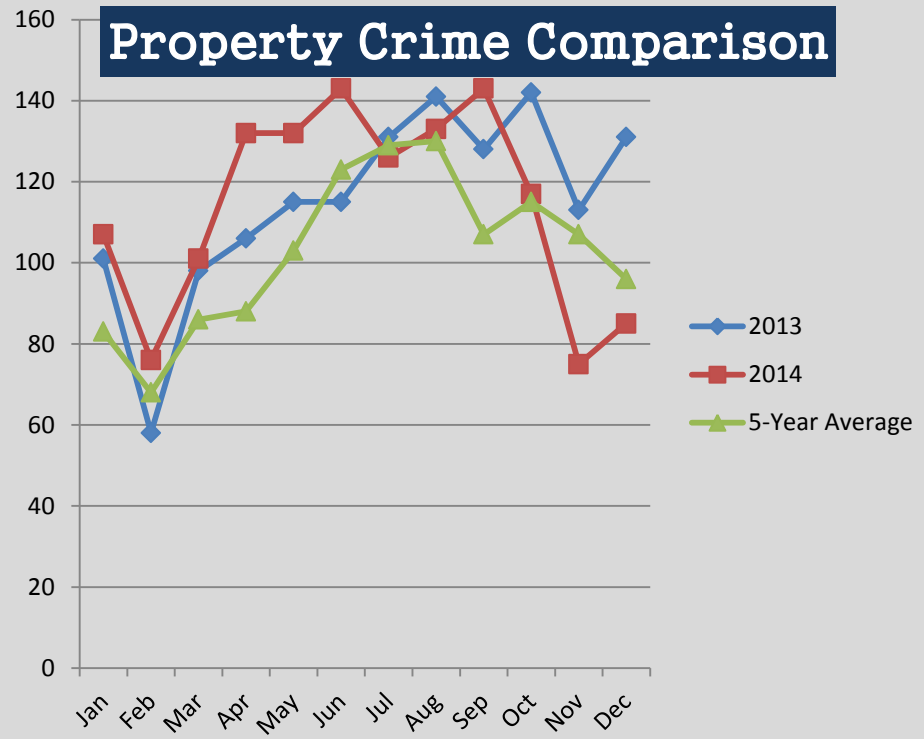


A Closer Look: CHANGING CRIME TRENDS

Violent Crime Comparison



Property Crime Comparison



The charts above help visualize the changing crime trends that we are seeing in Pittsfield. Property Crime rates were higher this year compared to the last all the way through June, but have since started to decline considerably. Starting in June of this year, however, a drastic rise in the number of Violent Crimes is apparent, especially when compared to 2013.