

# Pittsfield Police Department CityStat

November 2014

*Produced by the Crime Analysis Unit*



# Part I Total Crime

Crime rates this month are, overall, lower than expected. On average, the drop in total Part I Crimes from October to November is **29%**, and this month, it fell **32%**. This can be attributed entirely to the drastic drop in Property Crimes this month, which is at the lowest number of incidents for the same month since 2006.

If Violent Crime rates had stayed where they were earlier this year, though, that total could be even lower. Unfortunately, we continue to see a higher-than-average rate of Violent Crime cases this month, following the trend that started in June.

## 4 Weeks

## Year to Date

## 5 Year

	Oct-2014	Nov-2014	% Change	2013	2014	% Change	Average	% Change
Total Violent Crime	25	21	-16%	96	167	74%	18	17%
Total Property Crime	117	75	-36%	1261	1285	2%	107	-30%
Total Part I Crime	142	96	-32%	1357	1452	7%	124	-23%

# Part I Property Crime

November's Property Crime rates are the lowest they have been since February of this year, which is especially remarkable since February is a shorter, colder month. The total is **30%** below average for the month of November, which indicates that the declining trend in Property Crime in Pittsfield is continuing.

While it is normal for Property Crime rates to decrease from October to November, typically the total only drops by **7%**. This year, there were 117 Property Crimes in October, and only 75 in November, which is a decrease of **36%**.

Not only are we doing better now than we were earlier this year with these crimes, but we are also declining at a much faster rate than we have in years.

	4 Week			Year to Date			5 Year	
	Oct-2014	Nov-2014	% Change	2013	2014	% Change	Average	% Change
Burglary (B&E)	43	24	-44%	440	437	-1%	34	-29%
Larceny (Total)	70	48	-31%	779	809	4%	66	-27%
Larceny from Building	11	7	-36%	116	119	3%	11	-36%
Larceny from Motor Vehicle	7	2	-71%	111	114	3%	10	-80%
Larceny from Person	2	0	-100%	39	20	-49%	2	-100%
Shoplifting	18	20	11%	157	175	11%	13	54%
Larceny Misc.	32	19	-41%	356	381	7%	30	-37%
Motor Vehicle Theft	4	3	-25%	42	39	-7%	7	-57%
<b>Total Property Crime</b>	<b>117</b>	<b>75</b>	<b>-36%</b>	<b>1261</b>	<b>1285</b>	<b>2%</b>	<b>107</b>	<b>-30%</b>

# Part I Violent Crime

Aggravated Assault rates, at least for the month of November, had been on a steady decline over the past five years. This year, however, they are back up to a rate they have not been at since 2010. The unusually high rate of Violent Crime that we have been seeing over the past several months can be attributed to this.

All other Violent Crimes have been following similar totals to last year, the previous months of this year, and the Five-Year Average. If Aggravated Assault cases were to decrease, Pittsfield could see the lowest overall Part I Crime rates it has for a long time.

	4 Week			Year to Date			5 Year	
	Oct-2014	Nov-2014	% Change	2013	2014	% Change	Average	% Change
Homicide	0	0	IN CALC	0	0	IN CALC	0	IN CALC
Rape	3	2	-33%	26	24	-8%	2	0%
Robbery	1	2	100%	26	30	15%	4	-50%
Aggravated Assault	20	17	-15%	41	107	161%	12	42%
Arson	1	0	-100%	3	6	100%	0	IN CALC
Total Violent Crime	25	21	-16%	96	167	74%	18	17%

# A Closer Look: Part I Property Crime

## Stat Recap:

Since Last Month:

↓ 36%

Compared to 2013  
Year-to-Date:

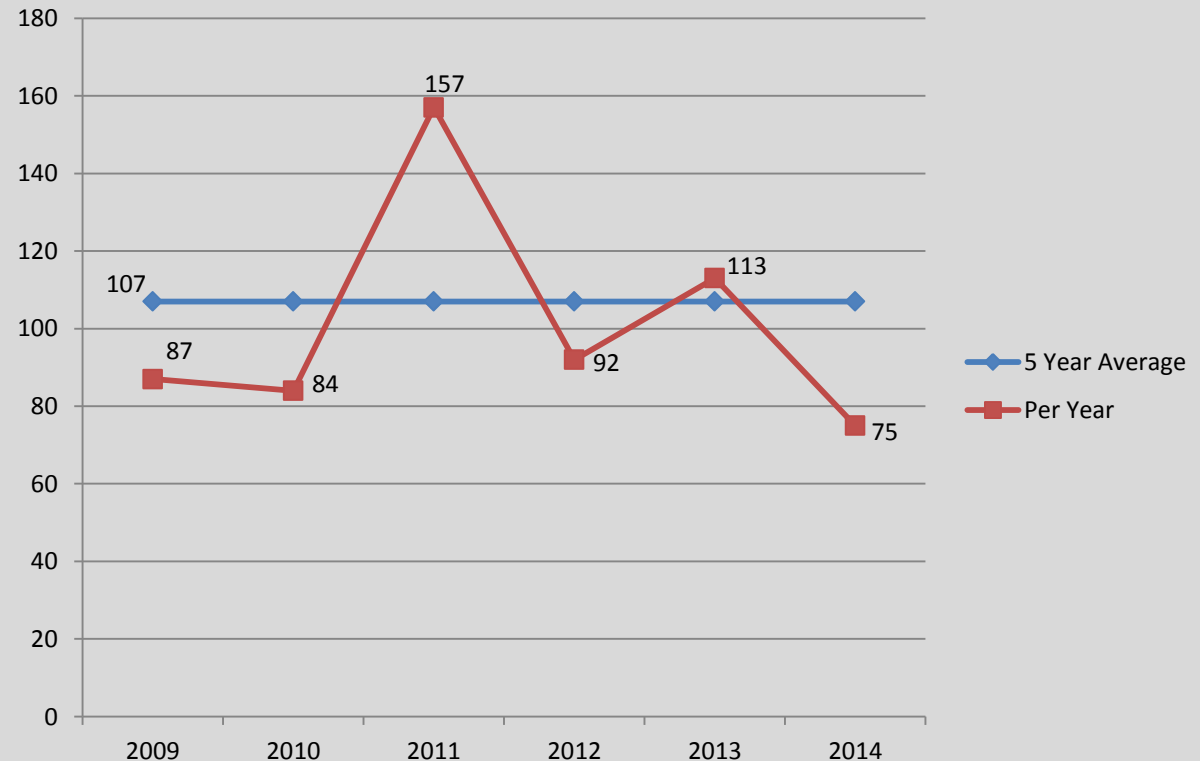
↑ 2%

Compared to 5 Year Avg:

↓ 30%

## Month of November Numbers 2009-2014

### PROPERTY CRIME



# A Closer Look: Part I Violent Crime

## Stat Recap:

Since Last Month:

↓ 16%

Compared to 2013  
Year-To-Date:

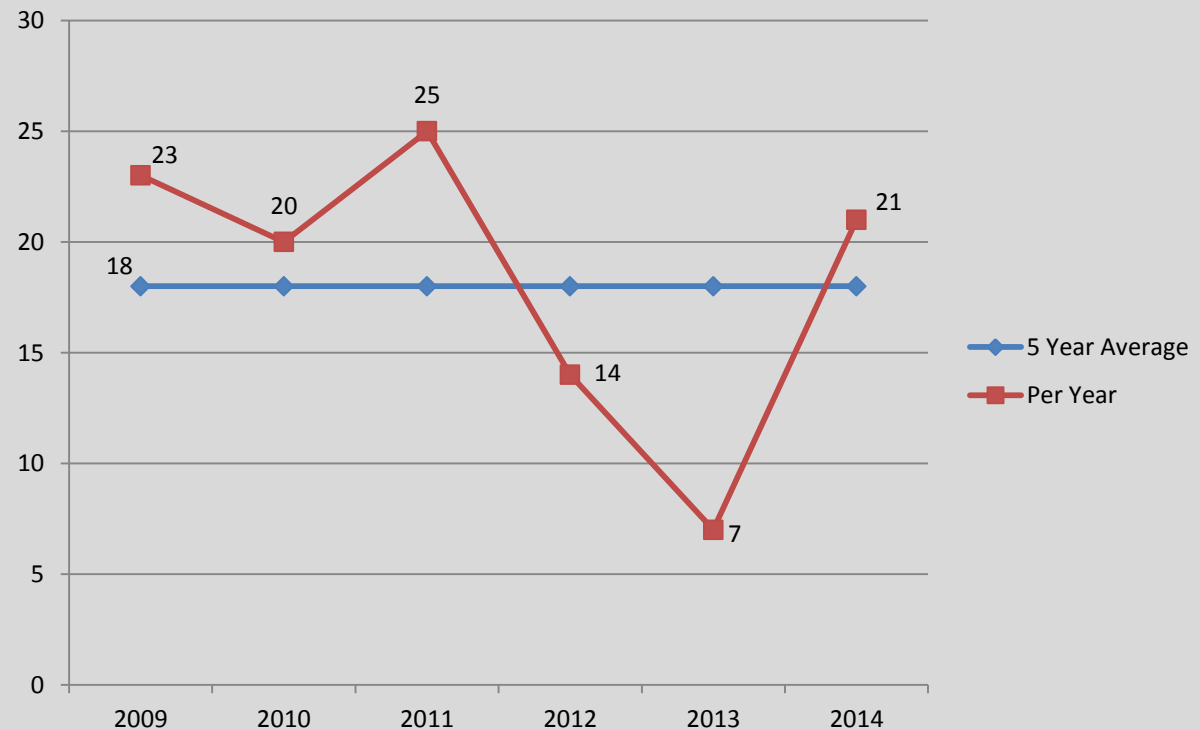
↑ 74%

Compared to 5 Year Avg:

↑ 17%

## Month of November Numbers 2009–2014

### VIOLENT CRIME



# A Closer Look: Burglary

## Stat Recap:

Since Last Month:

↓ 44%

Compared to 2013  
Year-To-Date:

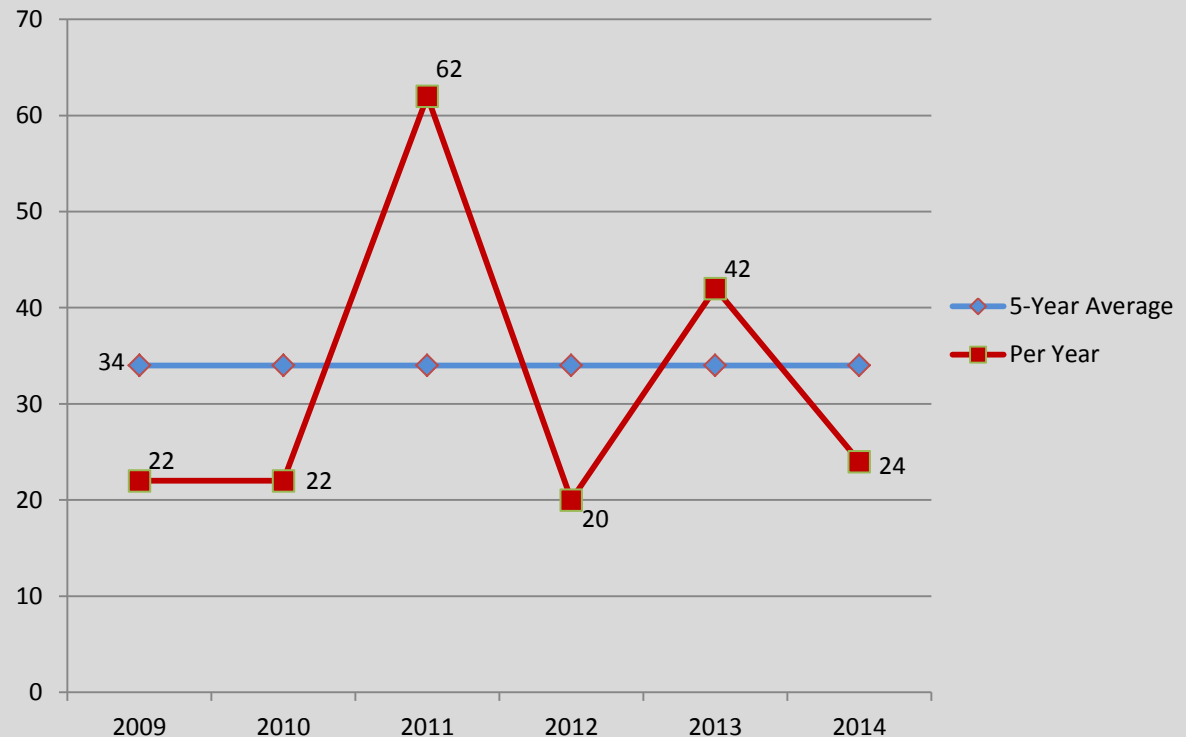
↓ 1%

Compared to 5 Year Avg:

↓ 29%

## Month of November Numbers 2009-2014

### BURGLARY



# A Closer Look: Larceny

## Stat Recap:

Since Last Month:

↓ 31%

Compared to 2013  
Year-To-Date:

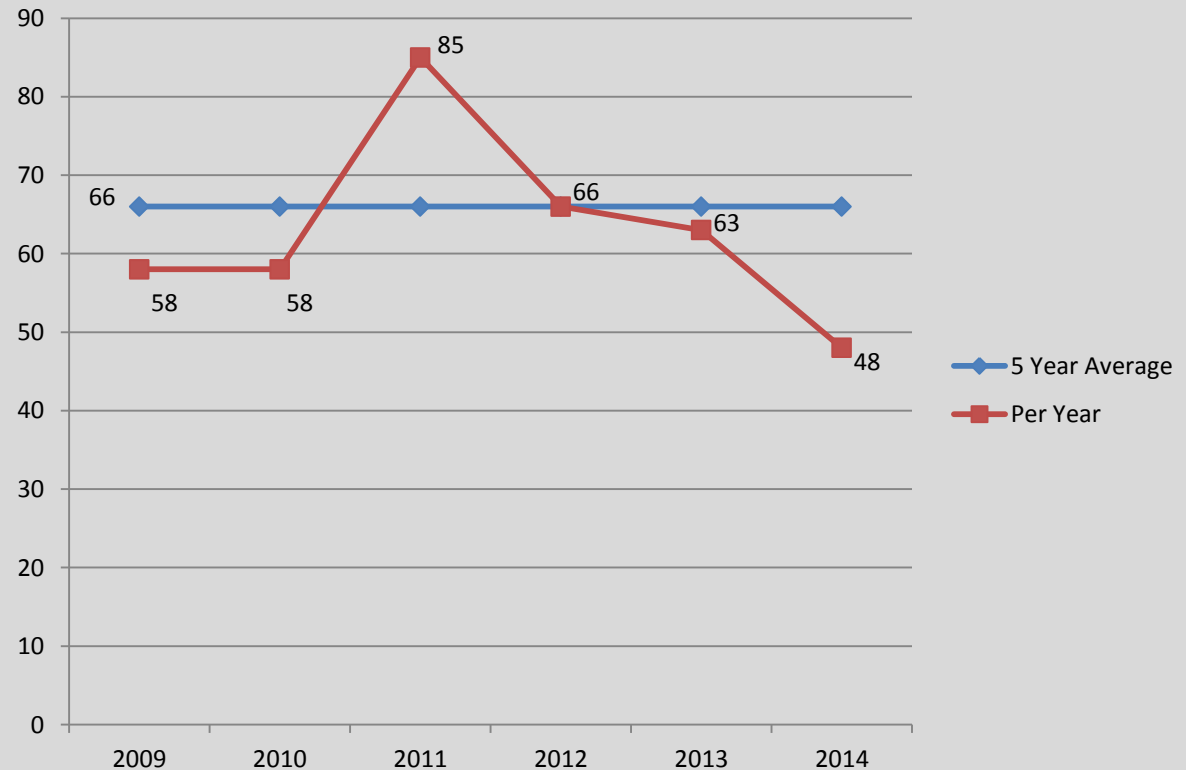
↑ 4%

Compared to 5 Year Avg:

↓ 27%

## Month of November Numbers 2009-2014

### LARCENY





# A Closer Look: AGGRAVATED ASSAULT

## Stat Recap:

Since Last Month:

↓ 15%

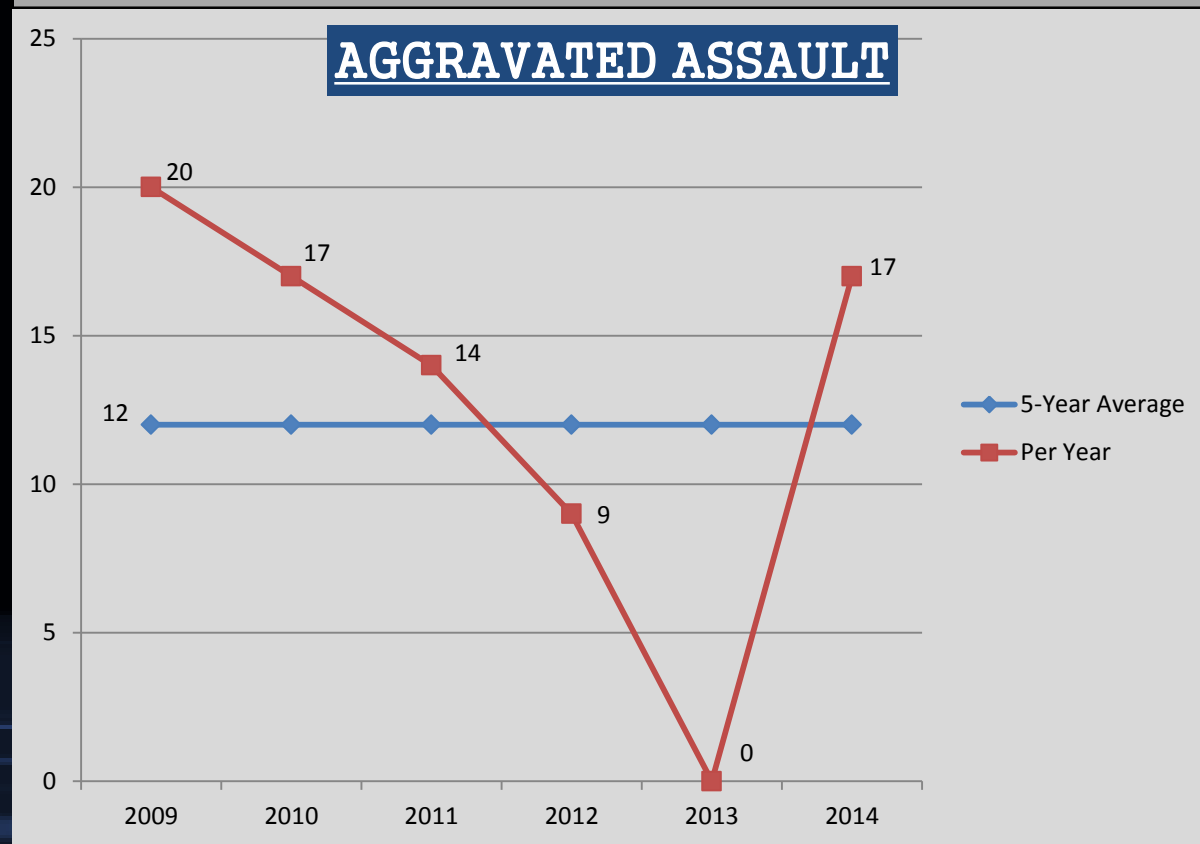
Compared to 2013  
Year-To-Date:

↑ 161%

Compared to 5 Year Avg:

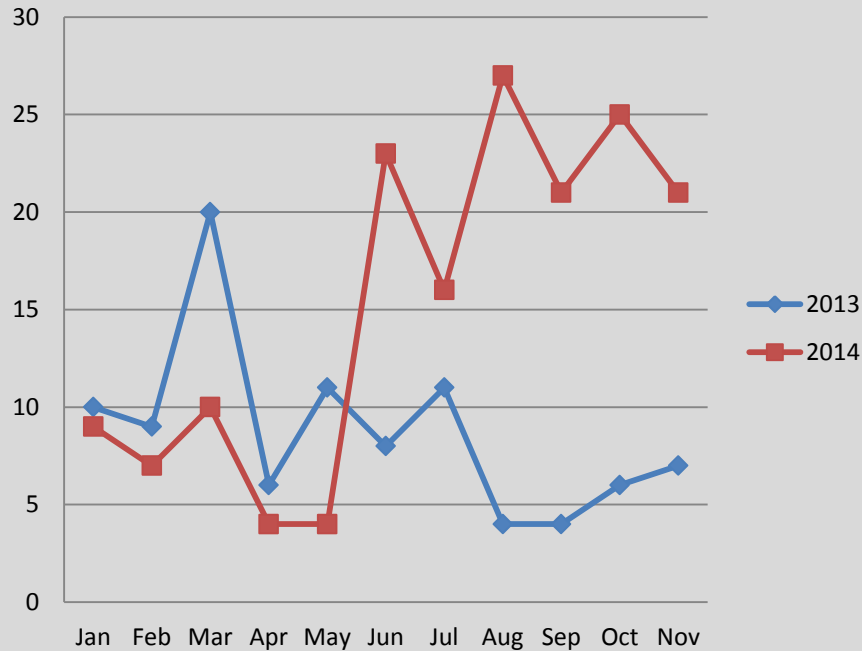
↑ 42%

## Month of November Numbers 2009–2014

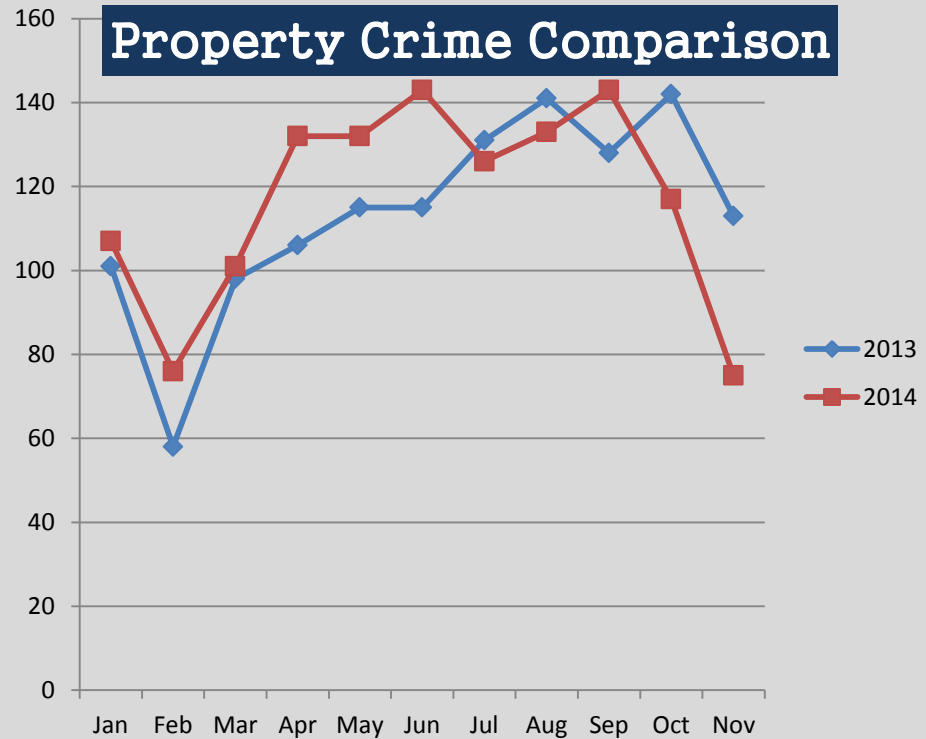


# A Closer Look: CHANGING CRIME TRENDS

## Violent Crime Comparison



## Property Crime Comparison



The charts above help visualize the changing crime trends that we are seeing in Pittsfield. Property Crime rates were higher this year compared to the last all the way through June, but have since started to decline. Starting in June of this year, however, a drastic rise in the number of Violent Crimes is apparent, especially when compared to 2013.