

# Pittsfield Police Department CityStat

October 2014

*Produced by the Crime Analysis Unit*



# Part I Total Crime

The trend changes in Pittsfield that started showing in June are becoming more apparent each month. In the first half of the year, Property Crime has been as much as **69%** higher than the Five-Year Average. Last Month, the Property Crime Rate was only **34%** higher than average, and this month, the trend continues downward, leaving us at only **2%** higher than average.

Violent Crime, however, was as low as **82% below** average, but, starting in June, jumped to above average rates. It continues to increase exponentially, leaving us at a rate at **32%** above average this month. Last month, we were **11%** above 2013's year-to-date total. In one month, the total became **64%** higher, with 25 additional Violent Crimes in 2014, and only 6 more from September to October in 2013.

## 4 Weeks

## Year to Date

## 5 Year

	Sep-2014	Oct-2014	% Change	2013	2014	% Change	Average	% Change
Total Violent Crime	21	25	19%	89	146	64%	19	32%
Total Property Crime	143	117	-18%	1148	1210	5%	115	2%
Total Part I Crime	164	142	-13%	1237	1356	10%	134	6%

# Part I Property Crime

October's totals continue to show how the city's Property Crime rate is improving. Compared to last month, we had **18%** fewer total Property Crimes. In 2013, there was actually an *increase* in Property Crime from September to October. Last month, the disparity between 2013's Year-to-Date totals and this year's was **9%**, and this month it is only **5%**. Additionally, last month's total compared to the Five-Year Average was **34%** higher, and this month's was only **2%** higher.

October's totals, being below average almost across the board, are a good indicator that Property Crime rates in Pittsfield are on the decline.

	4 Week			Year to Date			5 Year	
	Sep-2014	Oct-2014	% Change	2013	2014	% Change	Average	% Change
Burglary (B&E)	53	43	-19%	398	413	4%	35	23%
Larceny (Total)	82	70	-15%	716	761	6%	75	-7%
Larceny from Building	7	11	57%	105	112	7%	11	0%
Larceny from Motor Vehicle	8	7	-13%	104	112	8%	12	-42%
Larceny from Person	3	2	-33%	36	20	-44%	4	-50%
Shoplifting	18	18	0%	141	155	10%	16	13%
Larceny Misc.	46	32	-30%	330	362	10%	32	0%
Motor Vehicle Theft	8	4	-50%	34	36	6%	5	-20%
<b>Total Property Crime</b>	<b>143</b>	<b>117</b>	<b>-18%</b>	<b>1148</b>	<b>1210</b>	<b>5%</b>	<b>115</b>	<b>2%</b>

# Part I Violent Crime

Property Crime rates may be dropping, but, unfortunately, Pittsfield is seeing the opposite effect for Violent Crime rates. More specifically, though, we are seeing a rise in Aggravated Assaults. The differences in other Violent Crime categories would not result in such a rise in the overall rate if not for the drastic increase in Aggravated Assault cases.

In May, there were only a total of 6 Aggravated Assault cases for the whole year prior. In October, 5 months later, the number has shot up to 90 cumulative cases. That is the equivalent of about **1.2 cases per month** in January through May, and **18 per month** June through October.

	4 Week			Year to Date			5 Year	
	Sep-2014	Oct-2014	% Change	2013	2014	% Change	Average	% Change
Homicide	0	0	IN CALC	0	0	IN CALC	0	IN CALC
Rape	3	3	0%	23	22	-4%	2	50%
Robbery	3	1	-67%	22	28	27%	3	-67%
Aggravated Assault	15	20	33%	41	90	120%	13	54%
Arson	0	1	IN CALC	3	6	100%	1	0%
Total Violent Crime	21	25	19%	89	146	64%	19	32%

# A Closer Look: Part I Property Crime

## Stat Recap:

Since Last Month:

↓ 18%

Compared to 2013  
Year-to-Date:

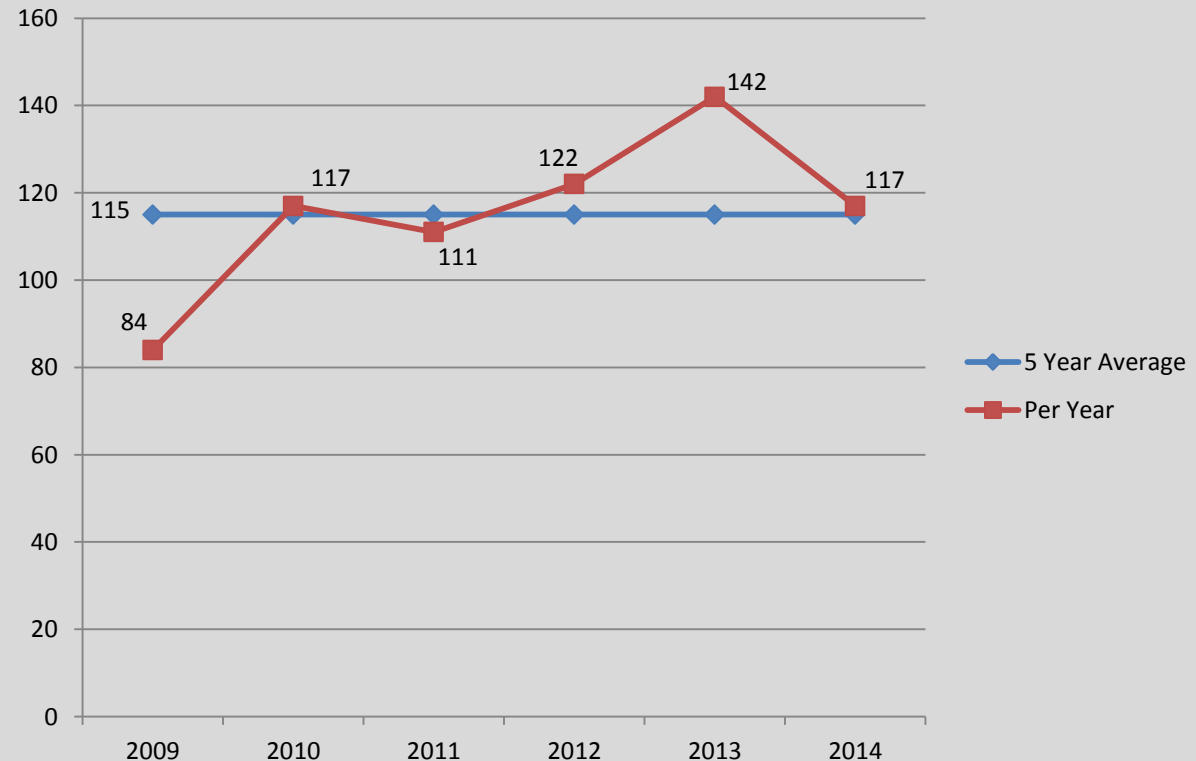
↑ 5%

Compared to 5 Year Avg:

↑ 2%

## Month of October Numbers 2009-2014

### PROPERTY CRIME



# A Closer Look: Part I Violent Crime

## Stat Recap:

Since Last Month:

↑ 19%

Compared to 2013  
Year-To-Date:

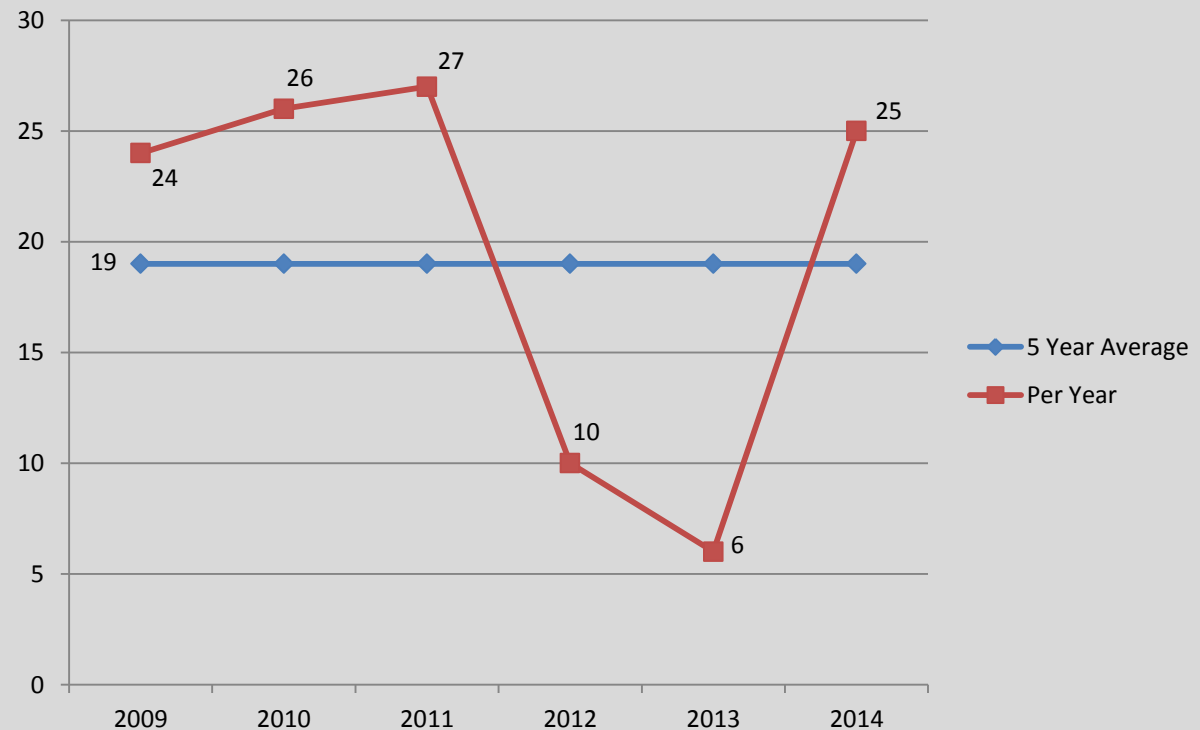
↑ 64%

Compared to 5 Year Avg:

↑ 32%

## Month of October Numbers 2009–2014

### VIOLENT CRIME



# A Closer Look: Burglary

## Stat Recap:

Since Last Month:

↓ 19%

Compared to 2013  
Year-To-Date:

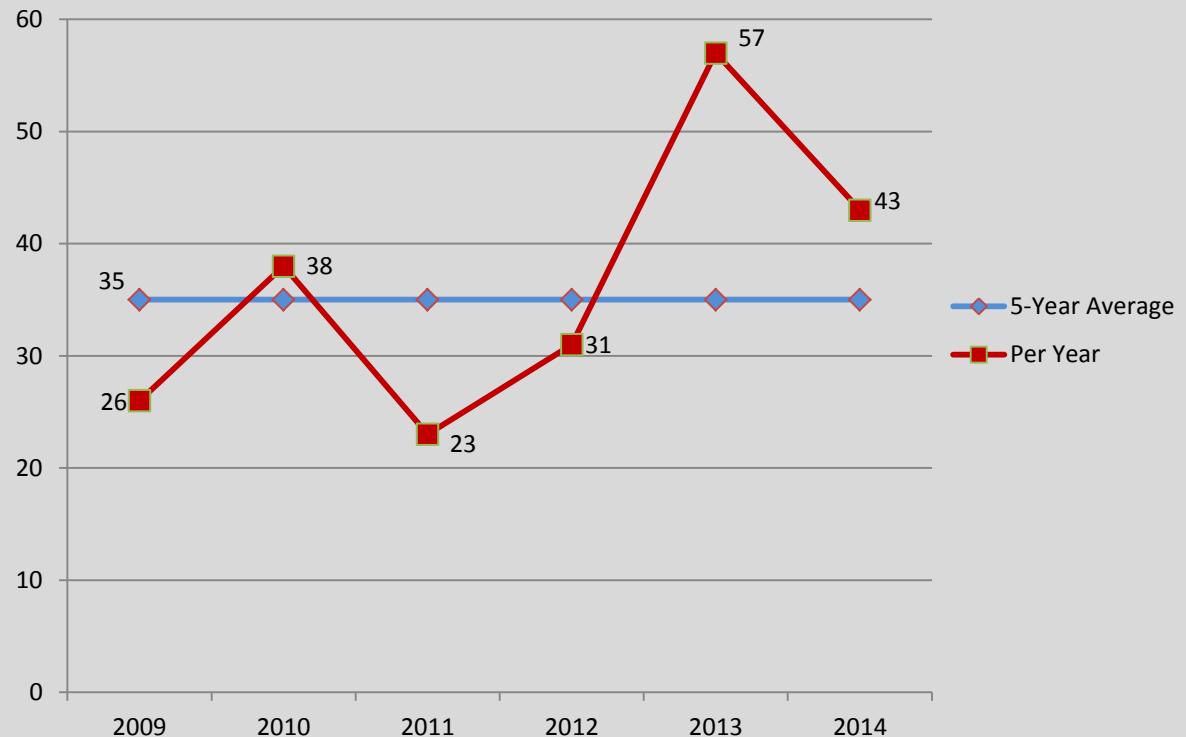
↑ 4%

Compared to 5 Year Avg:

↑ 23%

## Month of October Numbers 2009-2014

### BURGLARY



# A Closer Look: Larceny

## Stat Recap:

Since Last Month:

↓ 15%

Compared to 2013  
Year-To-Date:

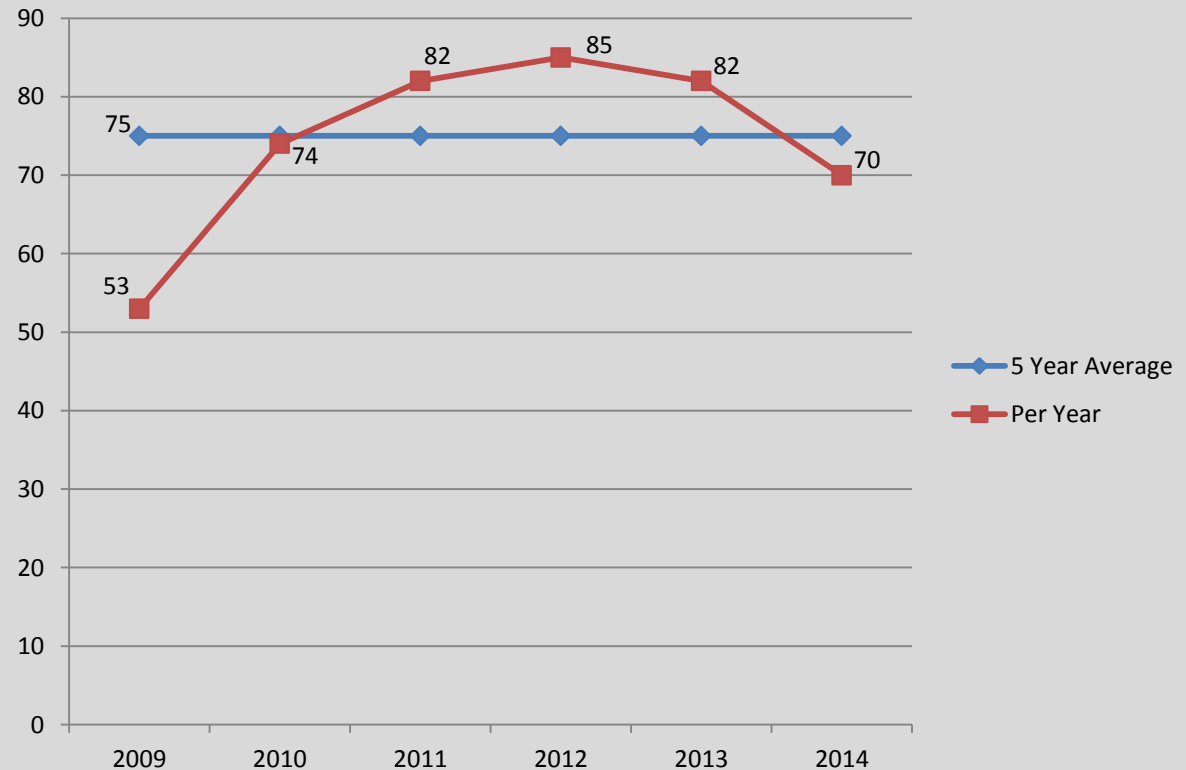
↑ 6%

Compared to 5 Year Avg:

↓ 7%

## Month of October Numbers 2009-2014

### LARCENY





# A Closer Look: AGGRAVATED ASSAULT

## Stat Recap:

Since Last Month:

↑ 33%

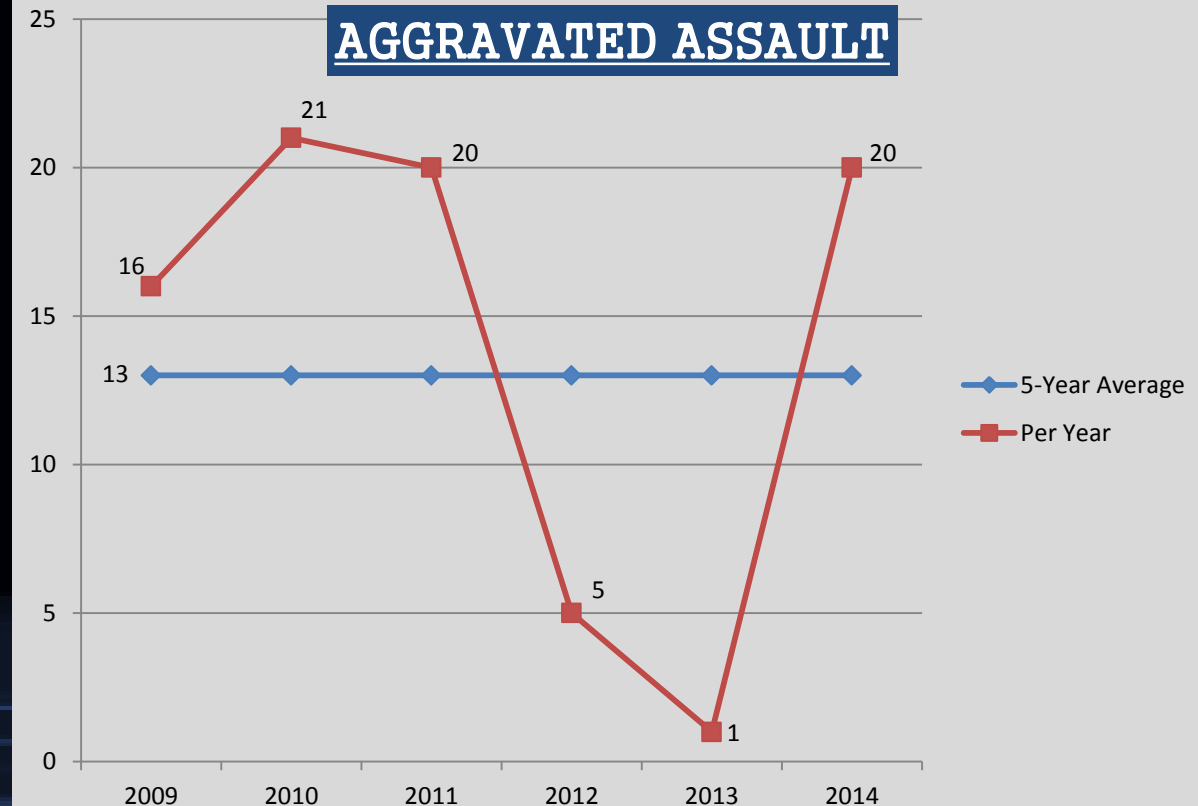
Compared to 2013  
Year-To-Date:

↑ 120%

Compared to 5 Year Avg:

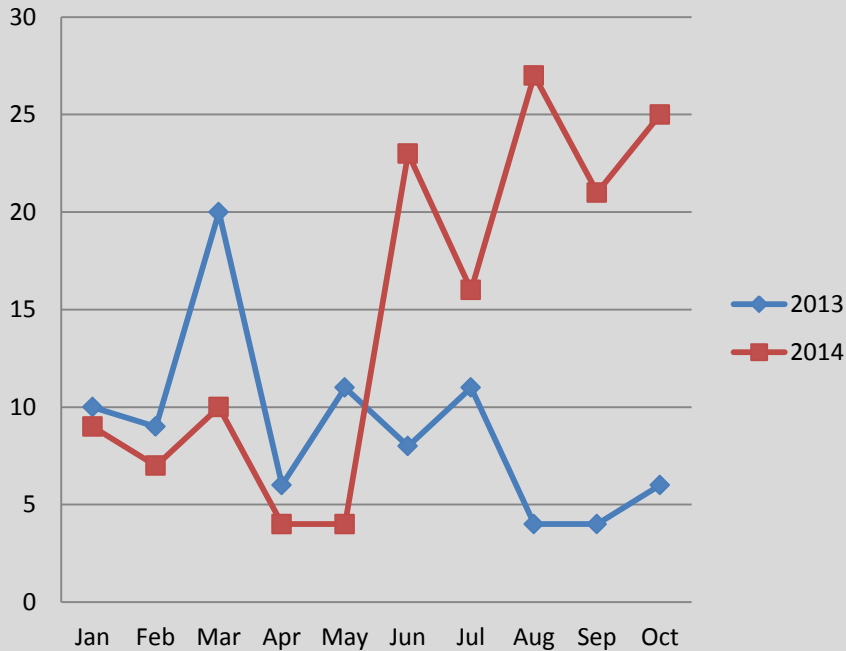
↑ 54%

## Month of October Numbers 2009-2014

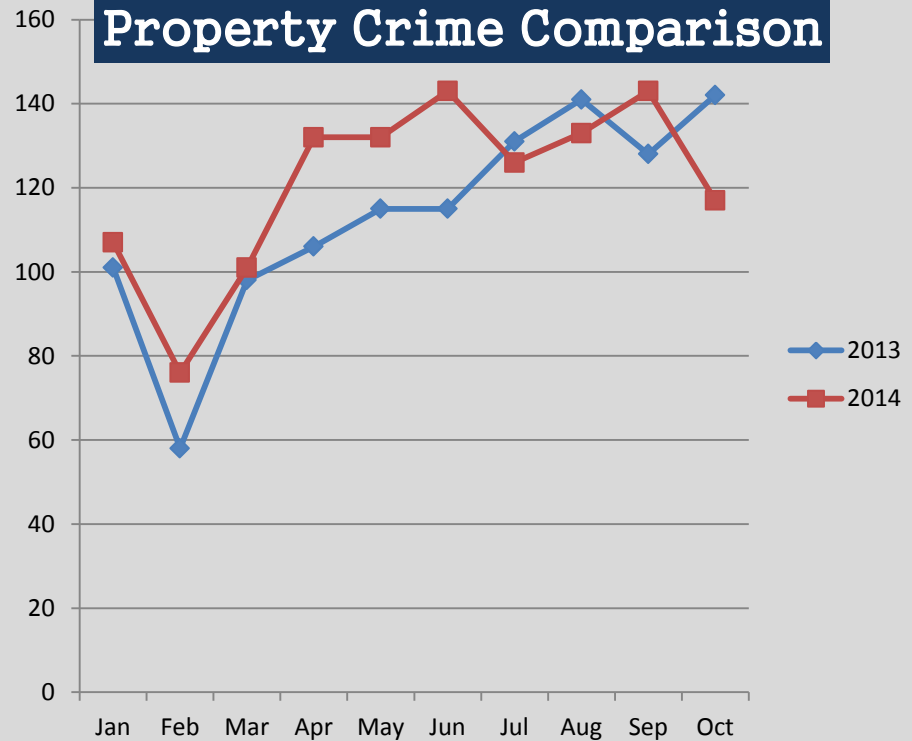


# A Closer Look: CHANGING CRIME TRENDS

## Violent Crime Comparison



## Property Crime Comparison



The charts above help visualize the changing crime trends that we are starting to see in Pittsfield. Property Crime rates were higher this year than last through June, but have since started to decline. Starting in June of this year, however, a drastic rise in the number of Violent Crimes is apparent, especially when compared to 2013.