

Pittsfield Police Department CityStat

October 2015

Produced by the Crime Analysis Unit



Part I Total Crime

There was a slight rise in Part I Crime almost across the board this month. Although the increase was only by a small number of cases in any category, the totals for the month have remained higher-than-average. According the five-year averages, however, it is normal for Property Crime totals to rise a bit from September to October, while Violent Crime totals typically stay about the same. Therefore, our increase in Violent Crime by only 3 cases and in Property Crime by 8 cases aren't too unusual or worrisome.

What *is* unusual is that we continue to maintain the pattern of significantly higher-than-average numbers of Violent Crimes each month that we have been seeing since June 2014. The Violent Crime trends we are seeing this year have now started to mimic those of last year, which vary a lot from what we've seen over the past five years.

4 Weeks

Year to Date

5 Year

	Sep-2015	Oct-2015	% Change	2014	2015	% Change	Average	% Change
Total Violent Crime	24	27	13%	147	234	59%	19	42%
Total Property Crime	121	128	6%	1213	1088	-10%	122	5%
Total Part I Crime	145	156	8%	1360	1323	-3%	140	11%

Part I Property Crime

There was a slight rise in overall Property Crime this month compared to last, but the degree by which it was higher in most areas is not too troubling. According to data from years past, though, these increases from September to October are normal.

There are only really two notable differences from the norm in the data below. The first is that there were a higher than average number of Larcenies from a Motor Vehicle, and a **64%** increase since last month. There are often spontaneous spikes and drops in this type of crime, and more cases can be facilitated by mild weather like we had this month. The other notable statistic is the low number of Shoplifting cases. There is an average increase of 5 Shoplifting cases from September to October, but this month, we actually had a **decrease** of 7 cases, or **37%** compared to last month.

	<u>4 Week</u>			<u>Year to Date</u>			<u>5 Year</u>	
	Sep-2015	Oct-2015	% Change	2014	2015	% Change	Average	% Change
Burglary (B&E)	47	35	-26%	410	339	-17%	38	-8%
Larceny (Total)	69	90	30%	767	716	-7%	79	14%
Larceny from Building	7	13	86%	113	97	-14%	11	18%
Larceny from Motor Vehicle	14	23	64%	112	117	4%	11	109%
Larceny from Person	1	5	400%	20	24	20%	4	25%
Shoplifting	19	12	-37%	155	157	1%	18	-33%
Larceny Misc.	28	37	32%	367	321	-13%	34	3%
Motor Vehicle Theft	5	3	-40%	36	33	-8%	5	-40%
Total Property Crime	121	128	6%	1213	1088	-10%	122	5%

Part I Violent Crime

Total Part I Violent Crime this month is only up by 3 cases compared to last, which is within a normal margin of error considering the averages from September to October in Pittsfield. What is striking, however, is the fact that we continue to see such an unusually high number of Aggravated Assaults in the city. This month, we were **85%** higher than average in that particular category. At 24 cases this month, we were also **33%** higher than last month, **60%** higher than August, and **85%** higher than July.

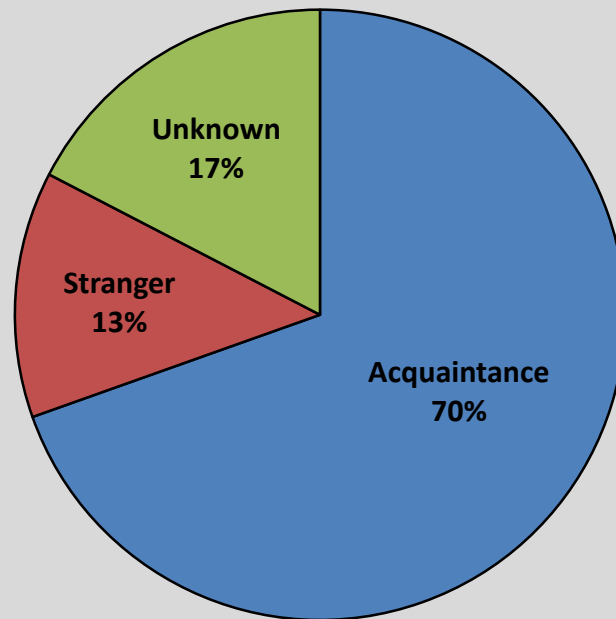
To put this in perspective, according to normal trends, our number of Aggravated Assaults in October should be on the lower end of the spectrum for the year. There have been other years in the past, though, where October's numbers of Aggravated Assault cases have been higher than some of the Summer months.

	4 Week			Year to Date			5 Year	
	Sep-2015	Oct-2015	% Change	2014	2015	% Change	Average	% Change
Homicide	0	0	IN CALC	0	3	IN CALC	0	IN CALC
Rape	3	1	-67%	21	21	0%	2	-50%
Robbery	2	2	0%	28	26	-7%	2	0%
Aggravated Assault	18	24	33%	92	182	98%	13	85%
Arson	1	0	-100%	6	2	-67%	1	-100%
Total Violent Crime	24	27	13%	147	234	59%	19	42%

A Closer Look: AGGRAVATED ASSAULT

Aggravated Assaults- October 2015

Victim's Relationship to Defendant



Please note that in many of the cases where the victim claimed not to have known their attacker, the victim was evasive answering questions from officers. Often even when people know who attacked them, they will not say so. Therefore, the percentage of Aggravated Assaults perpetrated by an acquaintance is likely higher than what is depicted above.

A Closer Look: Part I Property Crime

Stat Recap:

Since Last Month:

↑ 7%

Compared to 2014
Year-to-Date:

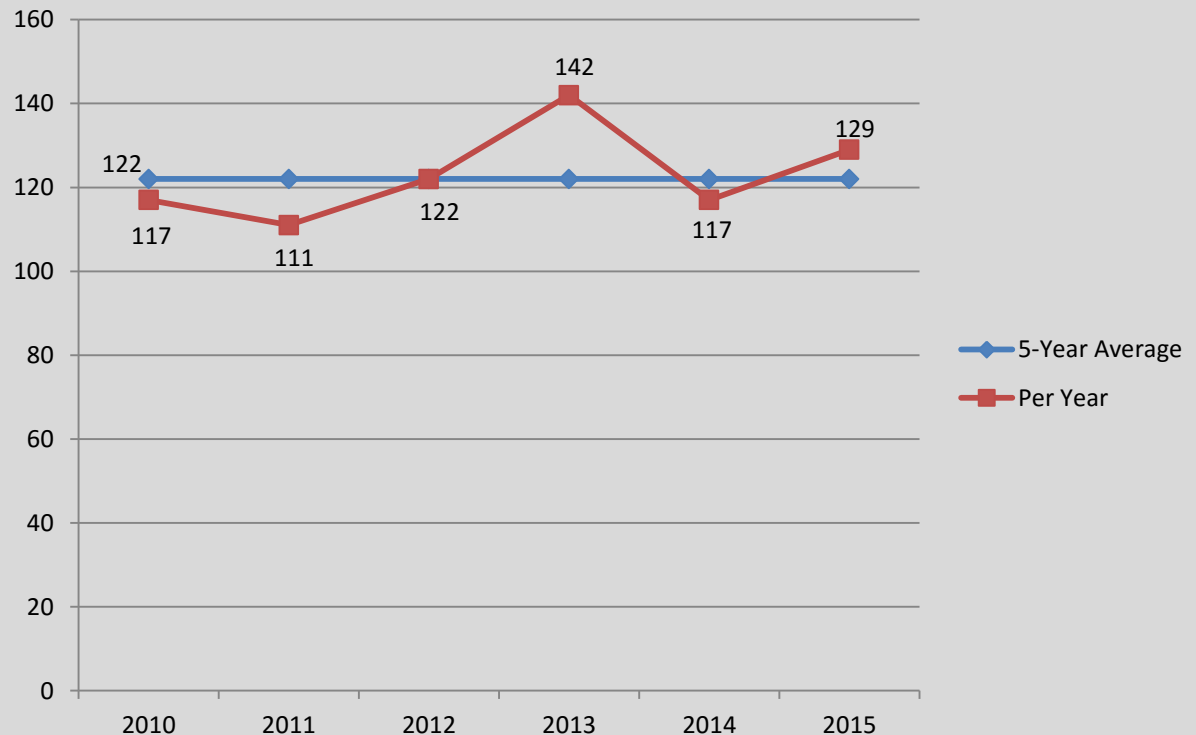
↓ 10%

Compared to 5 Year Avg:

↑ 6%

Month of October Numbers 2010-2015

PROPERTY CRIME



A Closer Look: Part I Violent Crime

Stat Recap:

Since Last Month:

↑ 13%

Compared to 2014
Year-To-Date:

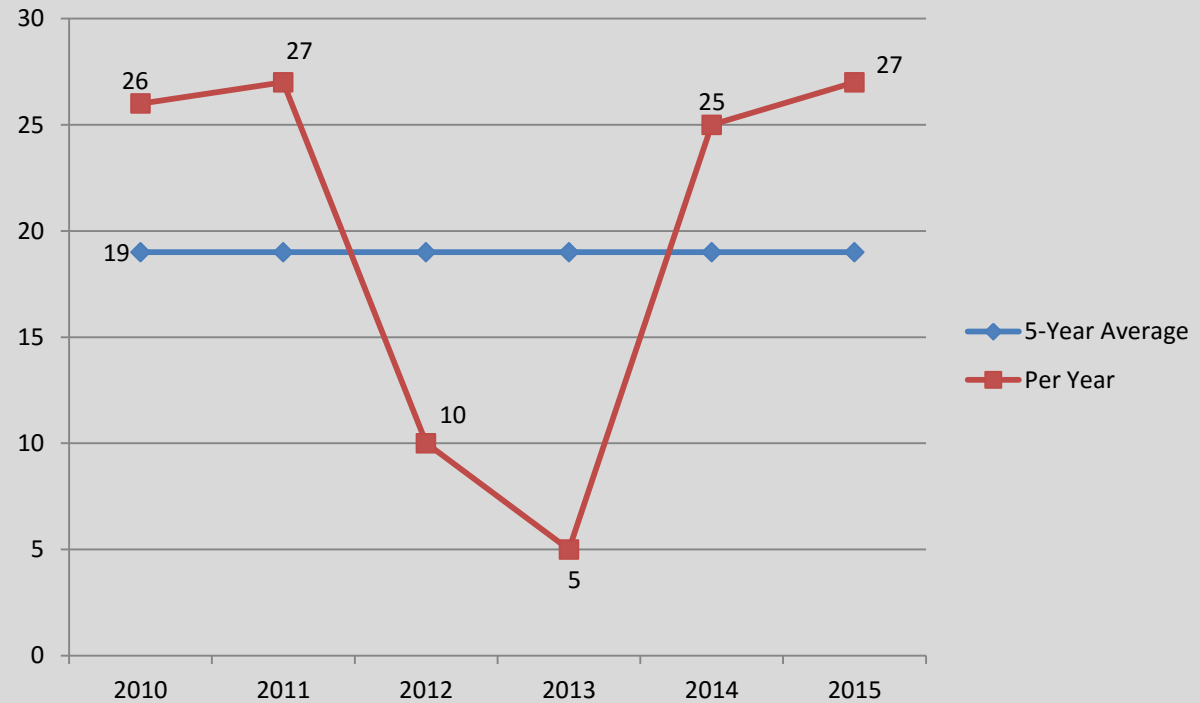
↑ 59%

Compared to 5 Year Avg:

↑ 42%

Month of October Numbers 2010-2015

VIOLENT CRIME



A Closer Look: Burglary

Stat Recap:

Since Last Month:

↓ 26%

Compared to 2014
Year-To-Date:

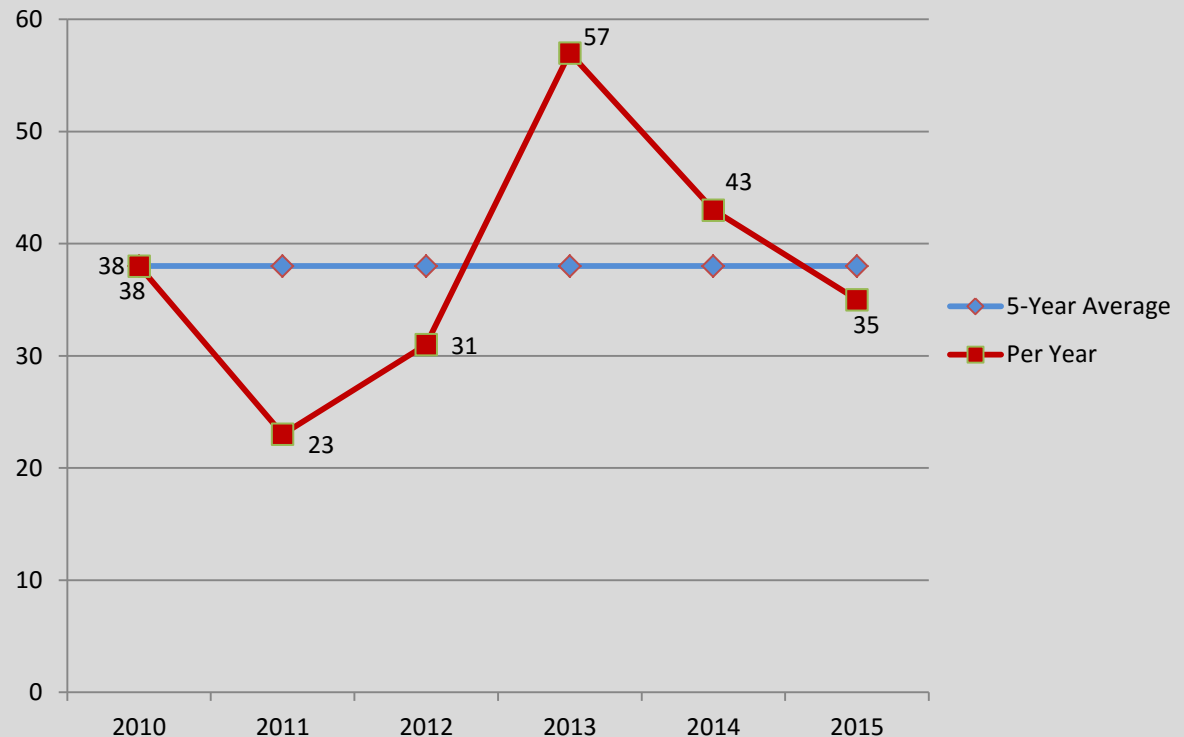
↓ 17%

Compared to 5 Year Avg:

↓ 8%

Month of October Numbers 2010-2015

BURGLARY



A Closer Look: Larceny

Stat Recap:

Since Last Month:

↑ 32%

Compared to 2014
Year-To-Date:

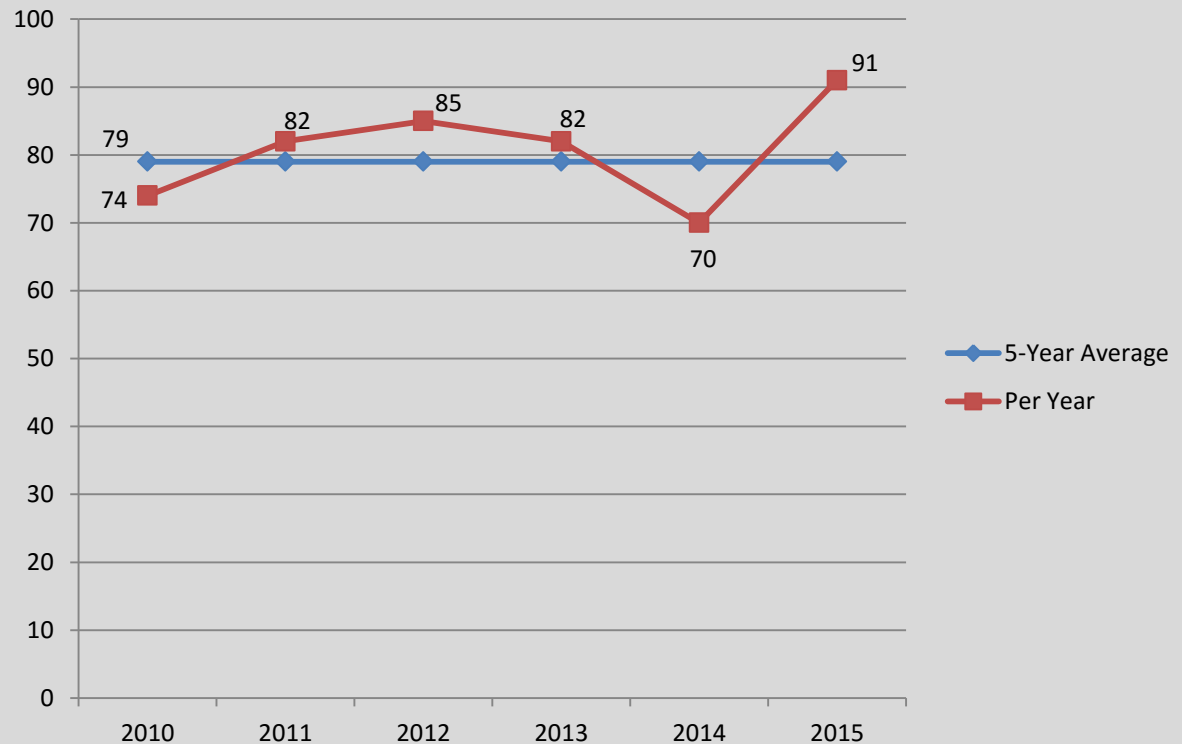
↓ 7%

Compared to 5 Year Avg:

↑ 15%

Month of October Numbers 2010-2015

LARCENY



A Closer Look: AGGRAVATED ASSAULT

Stat Recap:

Since Last Month:

↑ 33%

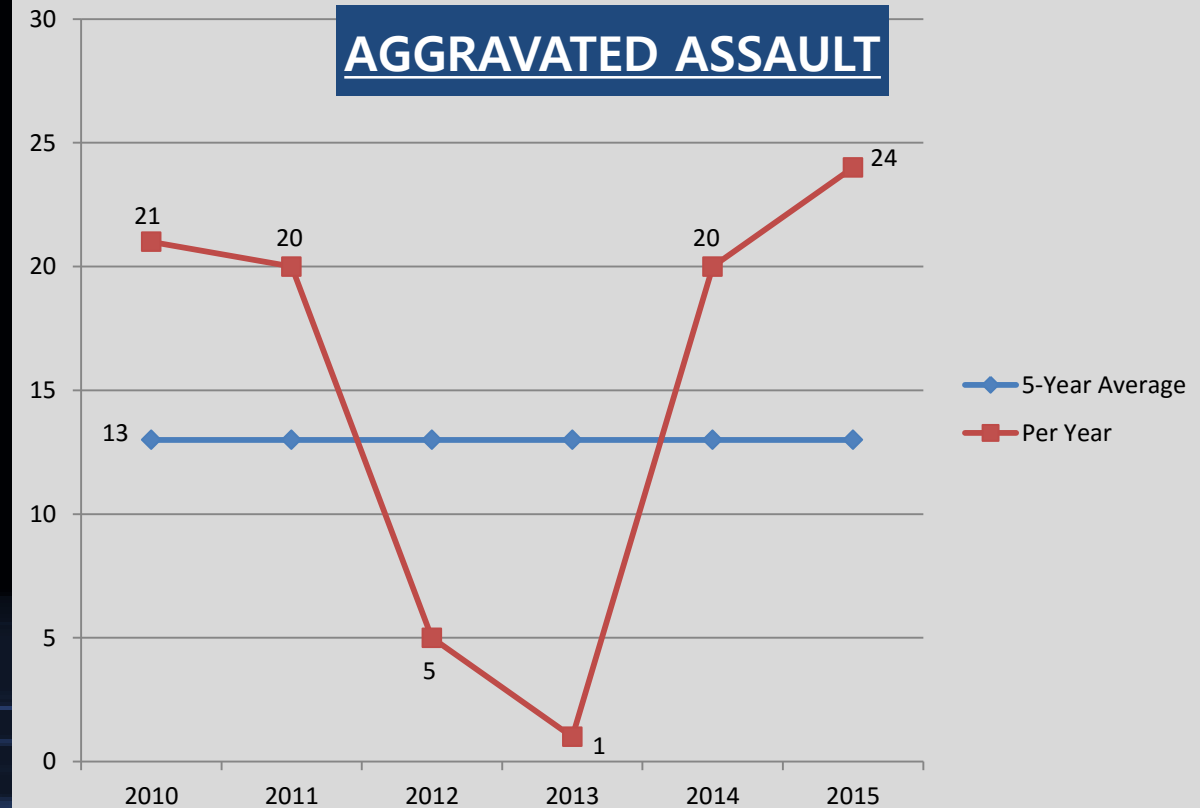
Compared to 2014
Year-To-Date:

↑ 98%

Compared to 5 Year Avg:

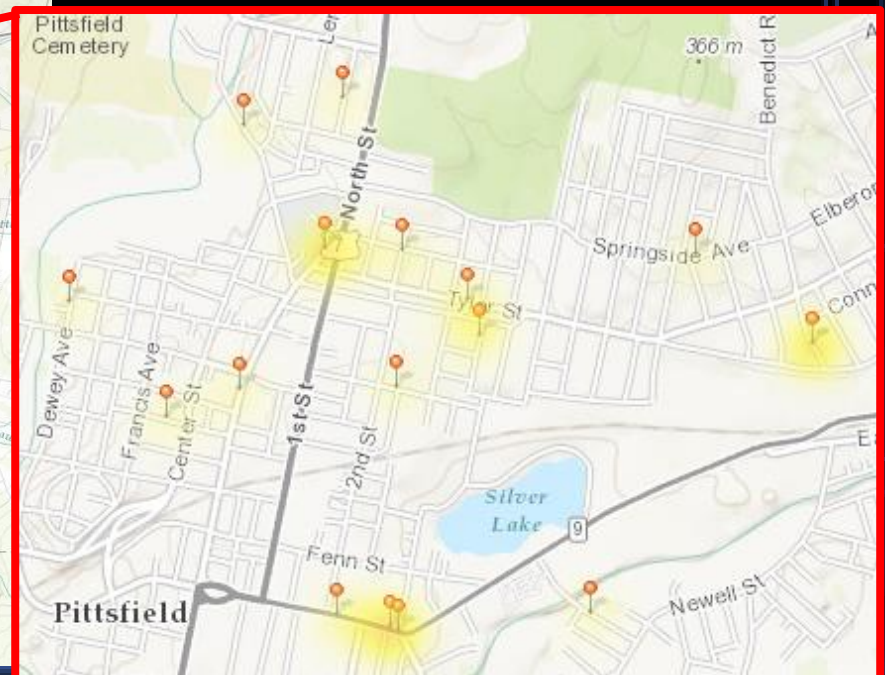
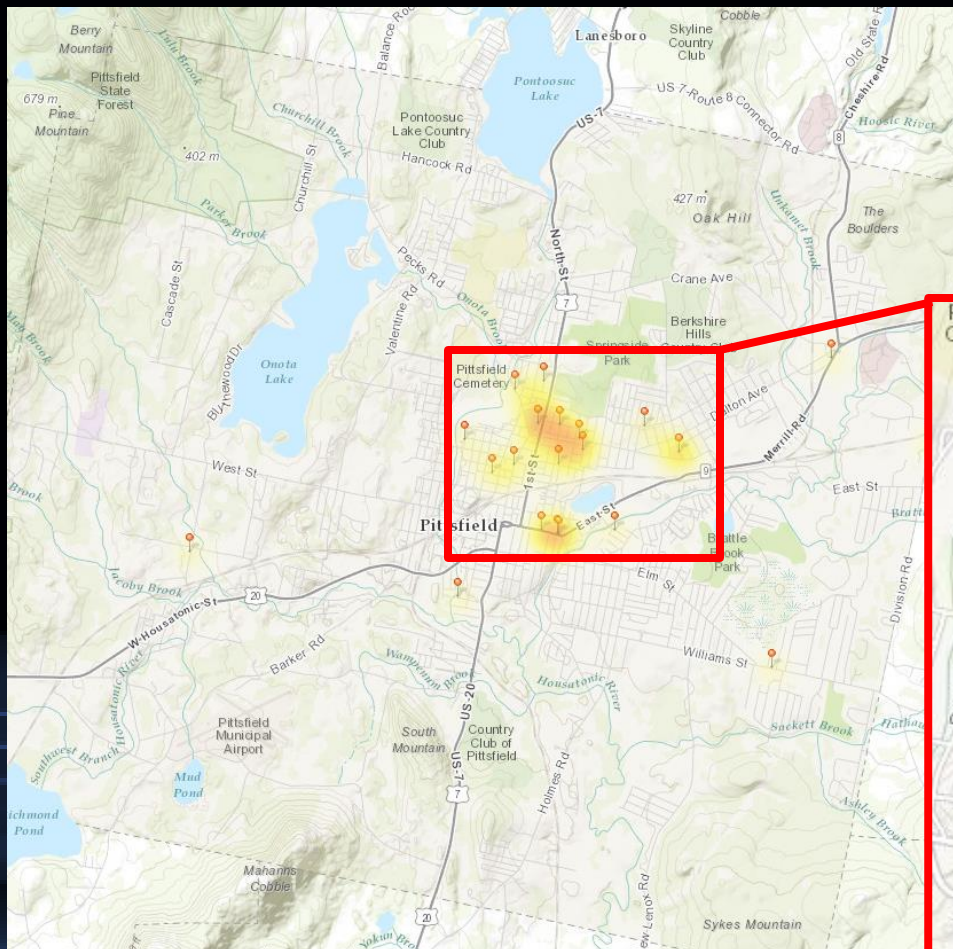
↑ 85%

Month of October Numbers 2010-2015



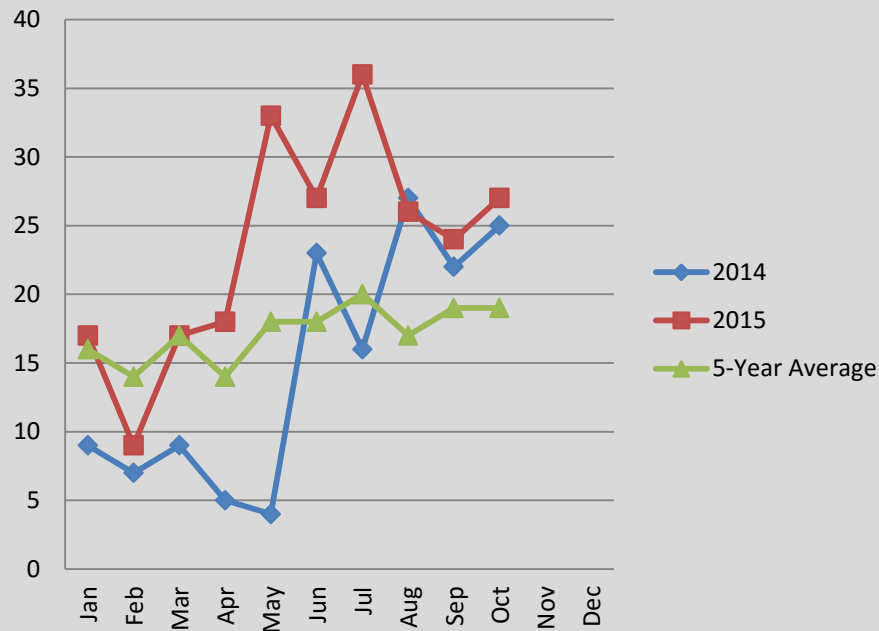
A Closer Look: AGGRAVATED ASSAULT

Aggravated Assaults- October 2015 Heat Map

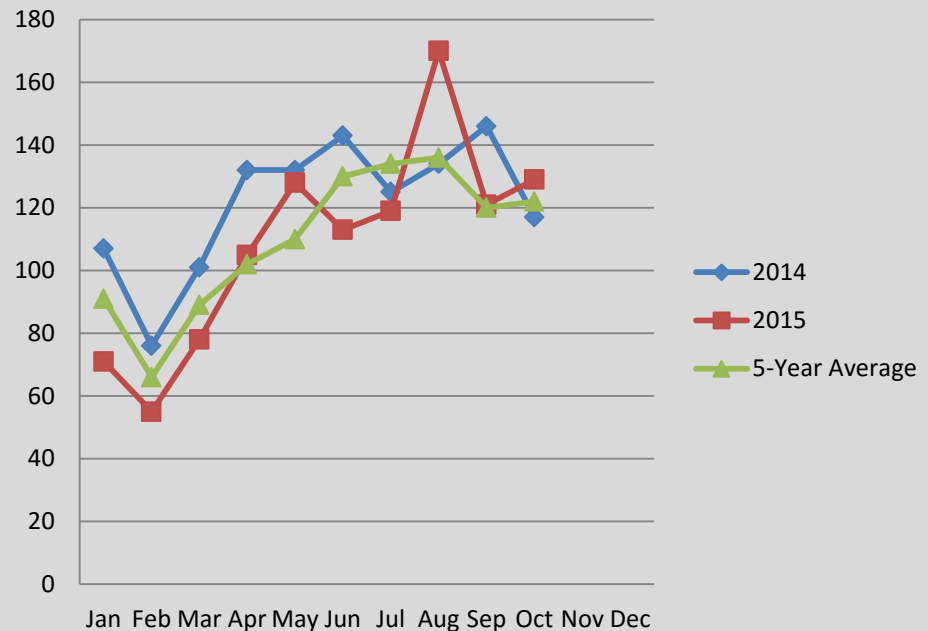


A Closer Look: CHANGING CRIME TRENDS

Violent Crime Comparison



Property Crime Comparison



The charts above help visualize the changing crime trends that we are seeing in Pittsfield. Property Crime rate trends have been mostly consistent with previous years, aside from one spike in August. Violent Crime rate trends, on the other hand, are differing quite a bit from the normal rises and falls. In July, Violent Crime was the highest it has been in years, but it slowly started to decrease over the next two months. With this month's slight increase, we appear to be following the Violent Crime trends of 2014, rather than the five-year average.