

Pittsfield Police Department CityStat

September 2015

Produced by the Crime Analysis Unit



Part I Total Crime

In this month of September, Part I crime rates are beginning to normalize. Compared to last month's spike in Property Crimes and the heightened rate of Violent Crimes in the earlier spring/summer months, both types of crime are significantly closer to average this month. We are only **26%** higher than average in Violent Crime this month, compared to **53%** higher last month and **80%** higher July. We are also only **1%** higher this month in Part I Property Crimes compared to **25%** higher last month. Additionally, we had **26%** fewer cases this month compared to last month, and are now down by **4%** in overall Part I crime and **12%** in Property Crime compared to the same time last year.

4 Weeks

Year to Date

5 Year

	Aug-2015	Sep-2015	% Change		2014	2015	% Change		Average	% Change
Total Violent Crime	26	24	-8%		122	207	70%		19	26%
Total Property Crime	170	121	-29%		1096	960	-12%		120	1%
Total Part I Crime	196	145	-26%		1218	1167	-4%		139	4%

Part I Property Crime

As can be seen below, Pittsfield had fewer Property Crimes this month compared to last month in almost every category. Maybe most impressively, we had 47 fewer larcenies this month than there were in August of this year. While looking at the averages, we can see that most of the Property Crime category rates for this month were close to what we would expect, there is usually only an average drop of about **12%** from August to September in overall Property Crime. This year, we achieved a **29%** drop in overall Property Crime.

	<u>4 Week</u>			<u>Year to Date</u>			<u>5 Year</u>	
	Aug-2015	Sep-2015	% Change	2014	2015	% Change	Average	% Change
Burglary (B&E)	52	47	-10%	367	304	-17%	43	9%
Larceny (Total)	116	69	-41%	697	626	-10%	72	-4%
Larceny from Building	12	7	-42%	102	84	-18%	9	-22%
Larceny from Motor Vehicle	27	14	-48%	105	94	-10%	12	17%
Larceny from Person	3	1	-67%	18	19	6%	2	-50%
Shoplifting	20	19	-5%	137	145	6%	13	46%
Larceny Misc.	54	28	-48%	335	284	-15%	37	-24%
Motor Vehicle Theft	2	5	150%	32	30	-6%	5	0%
Total Property Crime	170	121	-29%	1096	960	-12%	120	1%

Part I Violent Crime

Despite the 3 additional Aggravated Assault cases we had this month, Violent Crime is still down by **8%** compared to last month. This is particularly interesting because there is usually an average *increase* of **12%** from August to September in Pittsfield. If you consider the high Violent Crime rates in July, the Violent Crime rate has dropped by **33%** in two months.

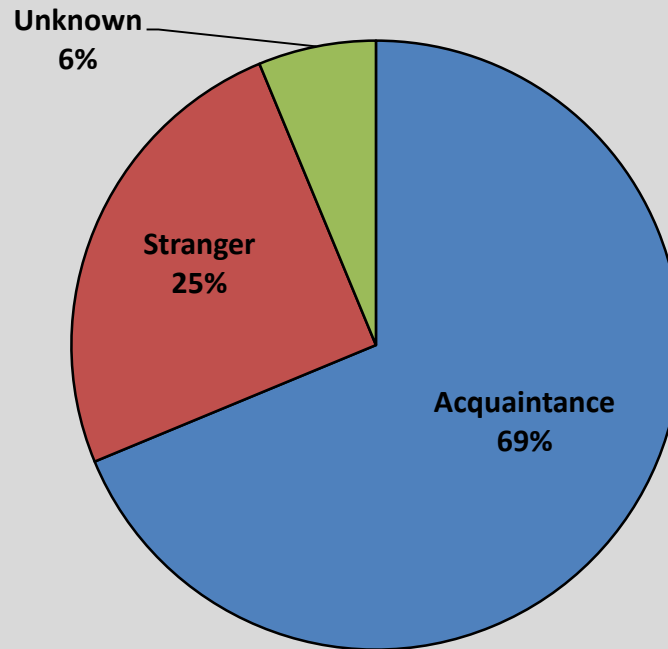
However, the heightened Aggravated Assault rate this year in general continues to keep our Violent Crime numbers considerably higher than average. By the end of 2014, we had a total of 130 Aggravated Assaults and 0 Homicides. By September of this year though, with three months still to go, we have already had 158 Aggravated Assaults and 3 Homicides.

	<u>4 Week</u>			<u>Year to Date</u>			<u>5 Year</u>	
	Aug-2015	Sep-2015	% Change	2014	2015	% Change	Average	% Change
Homicide	1	0	-100%	0	3	IN CALC	0	IN CALC
Rape	4	3	-25%	18	20	11%	2	50%
Robbery	6	2	-67%	27	24	-11%	4	-50%
Aggravated Assault	15	18	20%	72	158	119%	12	50%
Arson	0	1	IN CALC	5	2	-60%	1	0%
Total Violent Crime	26	24	-8%	122	207	70%	19	26%

A Closer Look: AGGRAVATED ASSAULT

Aggravated Assaults- September 2015

Victim's Relationship to Defendant



Please note that in many of the cases where the victim claimed not to have known their attacker, the victim was evasive answering questions from officers. Often even when people know who attacked them, they will not say so. Therefore, the percentage of Aggravated Assaults perpetrated by an acquaintance is likely higher than what is depicted above.

A Closer Look: Part I Property Crime

Stat Recap:

Since Last Month:

↓ 29%

Compared to 2014
Year-to-Date:

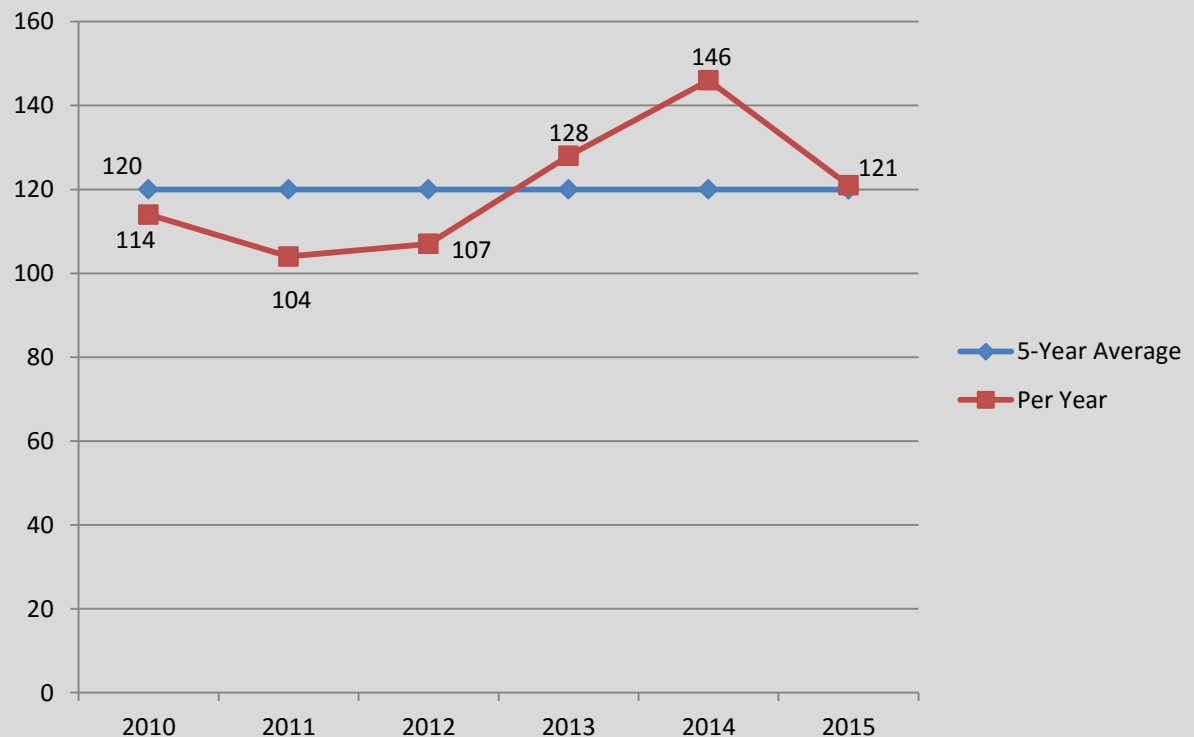
↓ 12%

Compared to 5 Year Avg:

↑ 1%

Month of September Numbers 2010-2015

PROPERTY CRIME



A Closer Look: Part I Violent Crime

Stat Recap:

Since Last Month:

↓ 8%

Compared to 2014
Year-To-Date:

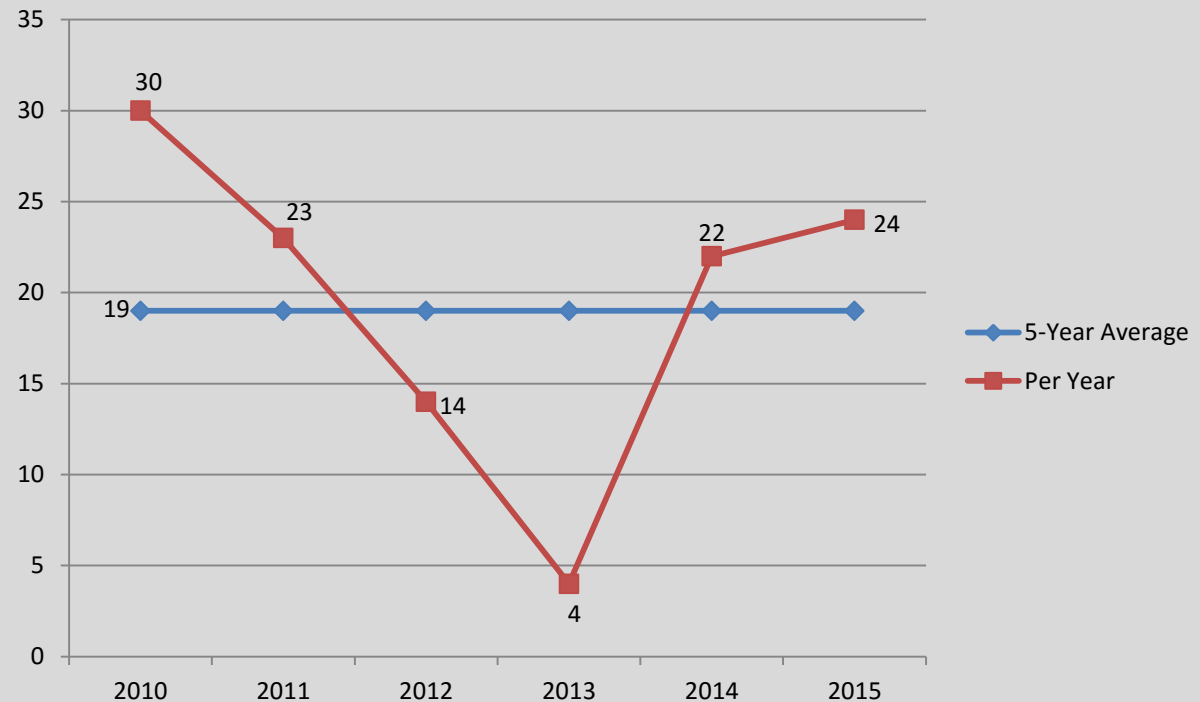
↑ 70%

Compared to 5 Year Avg:

↑ 26%

Month of September Numbers 2010-2015

VIOLENT CRIME



A Closer Look: Burglary

Stat Recap:

Since Last Month:

↓ 10%

Compared to 2014
Year-To-Date:

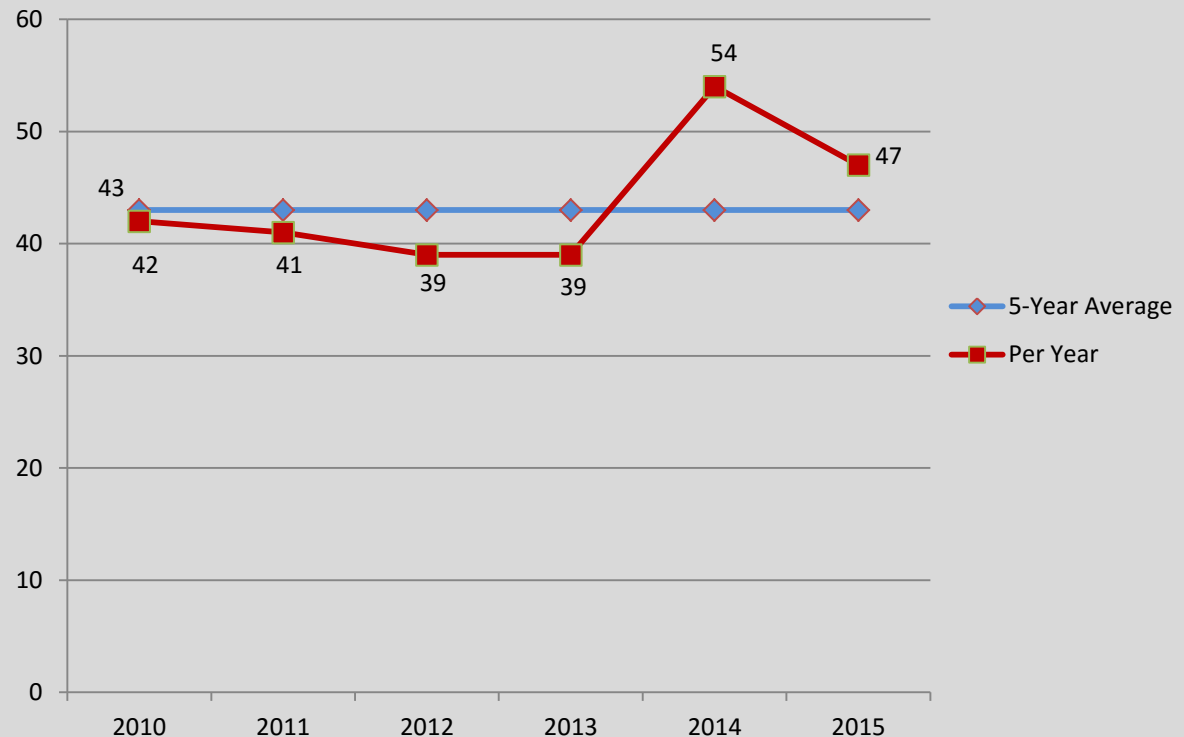
↓ 17%

Compared to 5 Year Avg:

↑ 9%

Month of September Numbers 2010-2015

BURGLARY



A Closer Look: Larceny

Stat Recap:

Since Last Month:

↓ 41%

Compared to 2014
Year-To-Date:

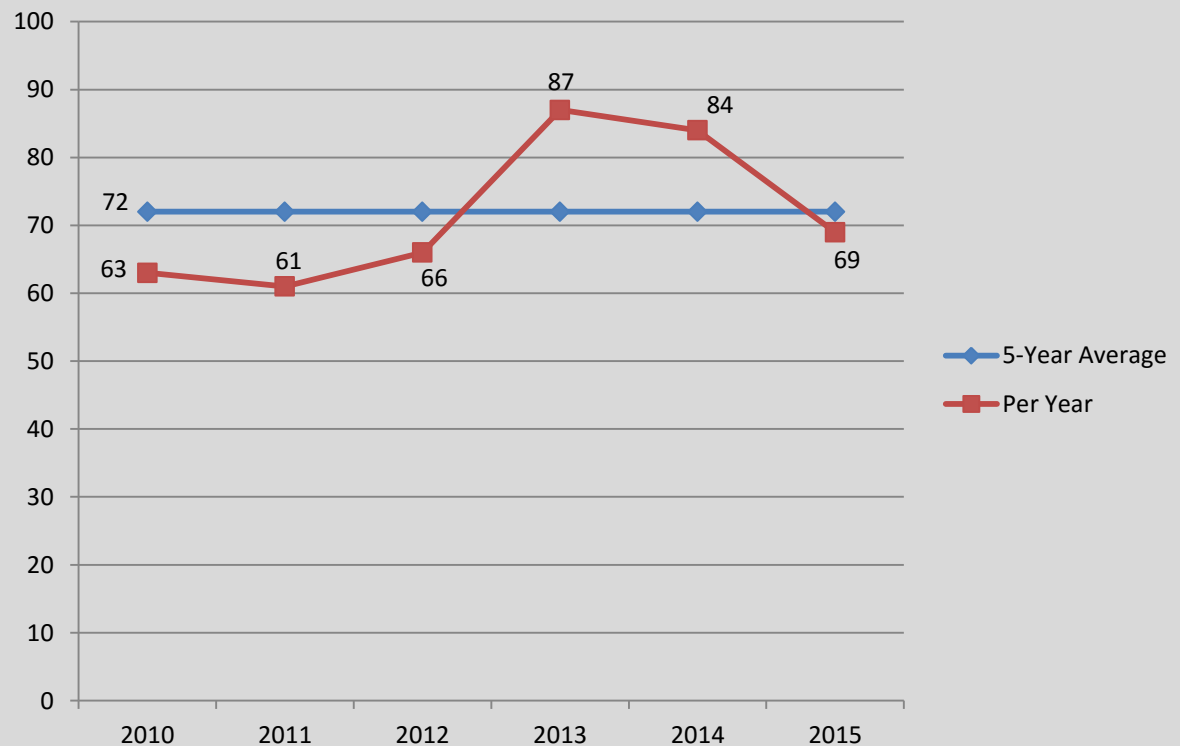
↓ 10%

Compared to 5 Year Avg:

↓ 4%

Month of September Numbers 2010-2015

LARCENY



A Closer Look: AGGRAVATED ASSAULT

Stat Recap:

Since Last Month:

↑ 20%

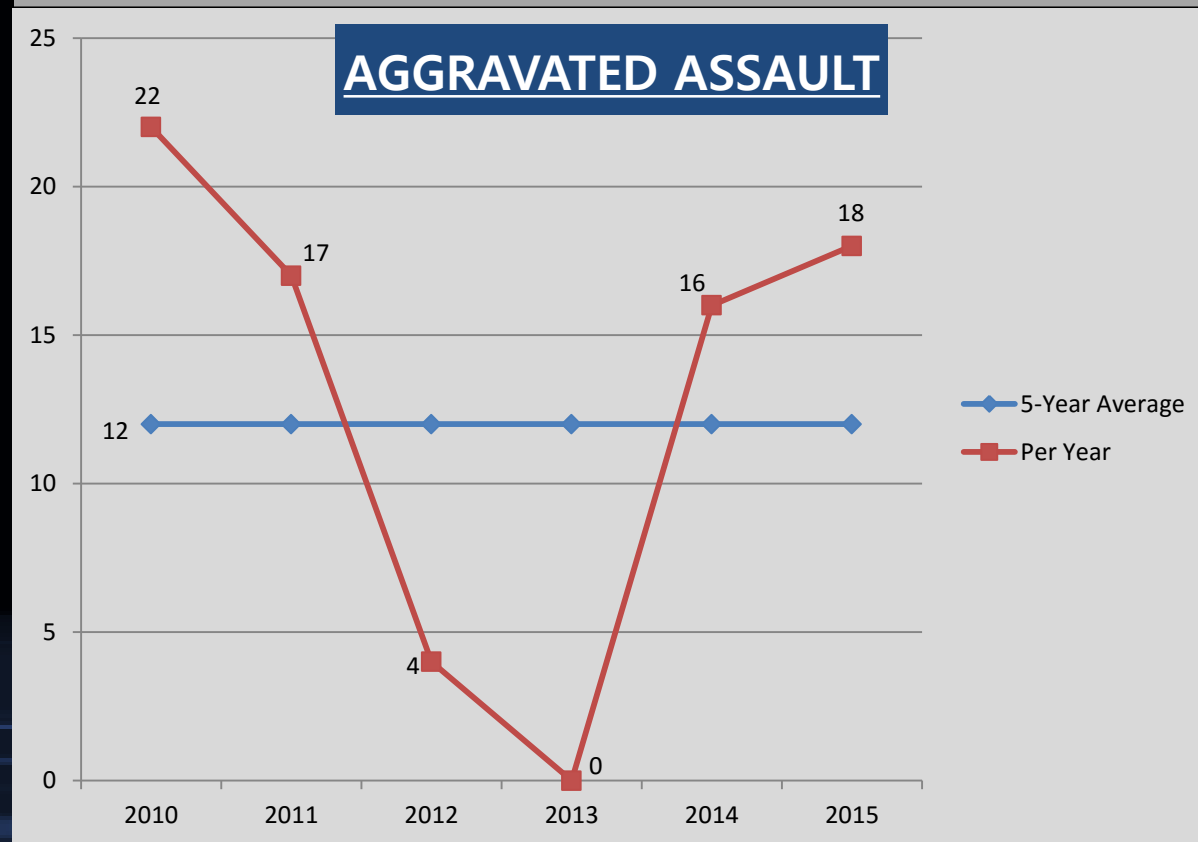
Compared to 2014
Year-To-Date:

↑ 119%

Compared to 5 Year Avg:

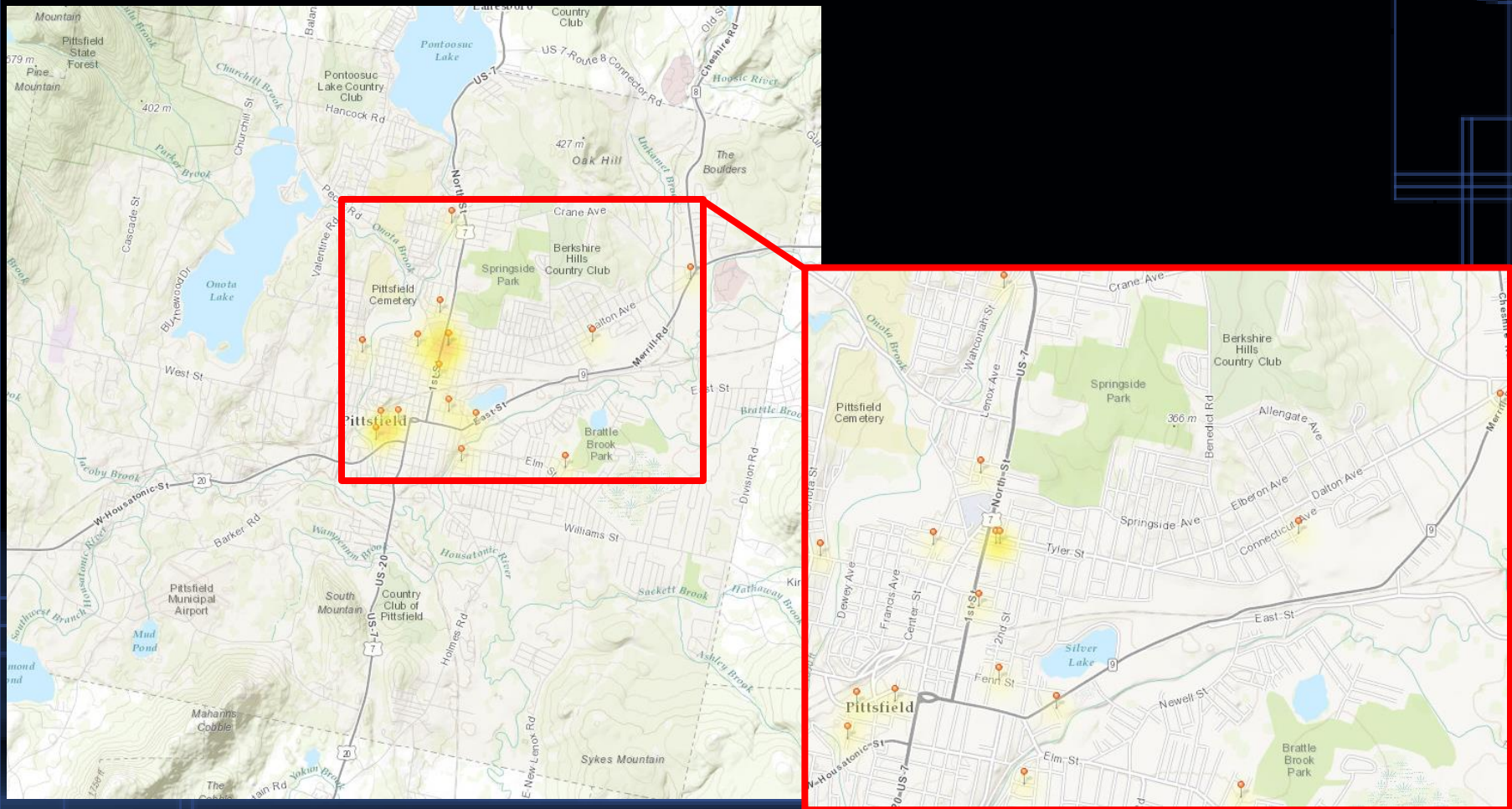
↑ 50%

Month of September Numbers 2010-2015



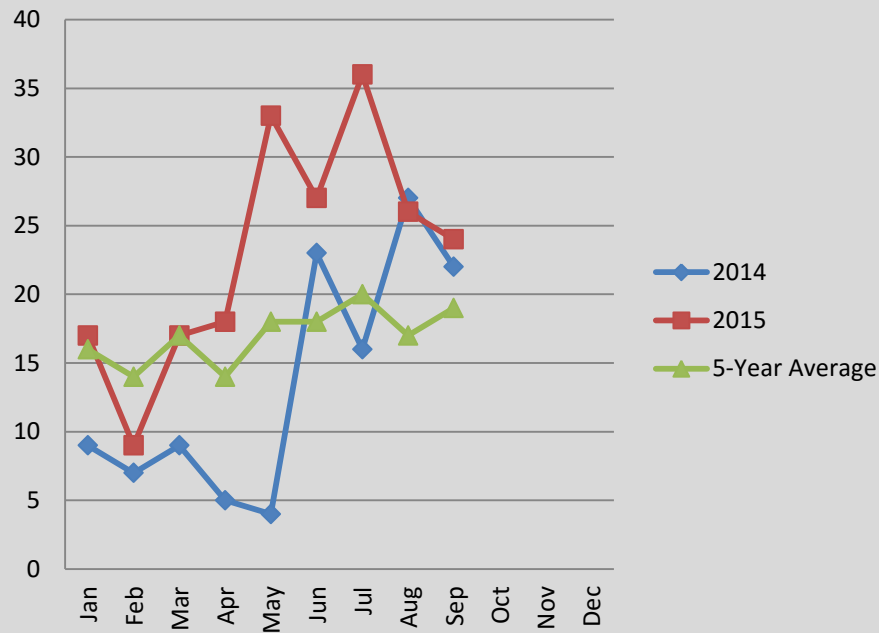
A Closer Look: AGGRAVATED ASSAULT

Aggravated Assaults- September 2015 Heat Map

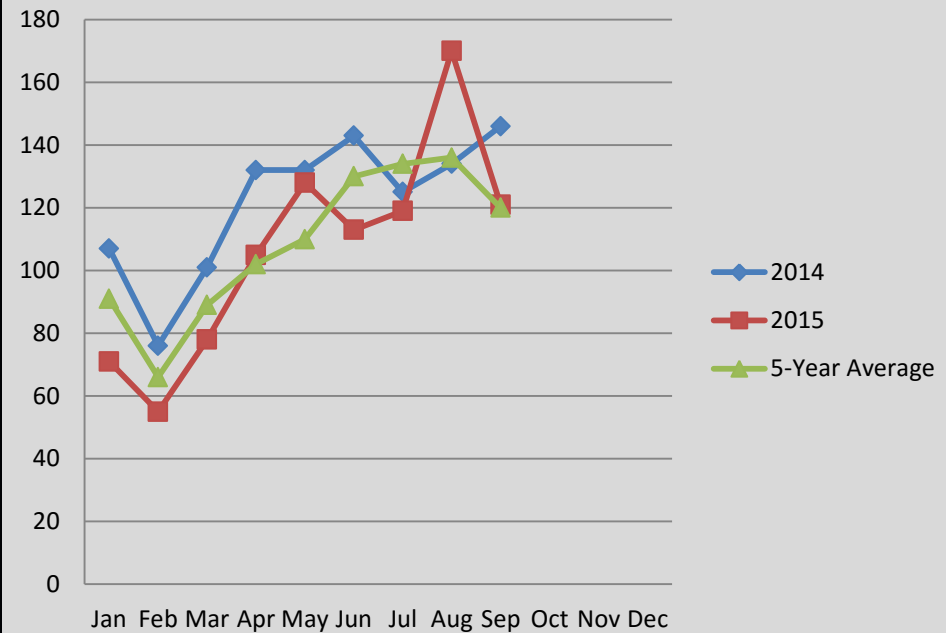


A Closer Look: CHANGING CRIME TRENDS

Violent Crime Comparison



Property Crime Comparison



The charts above help visualize the changing crime trends that we are seeing in Pittsfield. Property Crime rate trends have been mostly consistent with previous years, and, despite last month's unusually high increase, is back down to a normal rate this month. Violent Crime rate trends, on the other hand, are differing quite a bit from the normal rises and falls. In July, Violent Crime was the highest it had been in years, but it has slowly started to decrease over the past two months.