

Pittsfield Police Department CityStat

September 2014

Produced by the Crime Analysis Unit



Part I Total Crime

The change in crime patterns for Pittsfield, which was noticeable last month, has persisted through September of this year. While Property Crime rates continue to follow along with last year's pattern of ups and downs, Violent Crime rates, which had been consistently lower for the whole first half of this year, have increased greatly.

Last month showed the highest Violent Crime rate in the past 5 years for August, however, that was not the case this month. Actually, September 2014 only had higher Violent Crime rates compared to the past 2 years.

2009 and 2011 both had 23 Violent Crimes and 2010 had 30. Last year, though, there were only 4 reported Violent Crimes in Pittsfield, so our total of 21 this year is significantly higher in comparison.

4 Weeks

Year to Date

5 Year

	Aug-2014	Sep-2014	% Change		2013	2014	% Change		Average	% Change
Total Violent Crime	27	21	-22%		83	121	46%		19	11%
Total Property Crime	133	143	8%		1006	1093	9%		107	34%
Total Part I Crime	160	164	3%		1089	1214	11%		126	30%

Part I Property Crime

This month, we continue to see a Property Crime rate that is much closer to where we were at the same time last year than it was for the majority of 2014. We have also been as much as **69%** higher than the Five-Year Average in earlier months this year, but September's Property Crime Rate is only **34%** higher than average.

On average, there is usually a drop in Property Crime in Pittsfield for the month of September. This year's mild September weather, though, may have contributed to the slight increase we saw this month.

	4 Week			Year to Date			5 Year	
	Aug-2014	Sep-2014	% Change	2013	2014	% Change	Average	% Change
Burglary (B&E)	51	53	4%	341	370	9%	38	39%
Larceny (Total)	81	82	1%	634	691	9%	66	24%
Larceny from Building	19	7	-63%	94	101	7%	9	-22%
Larceny from Motor Vehicle	15	8	-47%	92	105	14%	11	-27%
Larceny from Person	1	3	200%	29	18	-38%	1	200%
Shoplifting	16	18	13%	119	137	15%	11	64%
Larceny Misc.	30	46	53%	300	330	10%	34	35%
Motor Vehicle Theft	1	8	700%	31	32	3%	4	100%
Total Property Crime	133	143	8%	1006	1093	9%	107	34%

Part I Violent Crime

This month has certainly been better than the last in regards to Violent Crime rates, but we are still a far cry from where we were at the beginning of the year. Until June, Pittsfield had as few as 4 Violent Crimes a month, but for the past three months, we have had totals at 23, 27, and now 21.

It appears that the majority of this inflation can be seen through the rise in Aggravated Assault. We have had **75%** more Aggravated Assault cases than the same time in 2013, and **91%** of them have occurred within the last four months.

	<u>4 Week</u>			<u>Year to Date</u>			<u>5 Year</u>	
	Aug-2014	Sep-2014	% Change	2013	2014	% Change	Average	% Change
Homicide	0	0	IN CALC	0	0	IN CALC	0	IN CALC
Rape	2	3	50%	21	19	-10%	3	0%
Robbery	2	3	50%	19	27	42%	3	0%
Aggravated Assault	20	15	-25%	40	70	75%	12	25%
Arson	3	0	-100%	3	5	67%	1	-100%
Total Violent Crime	27	21	-22%	83	121	46%	19	11%

A Closer Look: Part I Property Crime

Stat Recap:

Since Last Month:

↑ 8%

Compared to 2013
Year-to-Date:

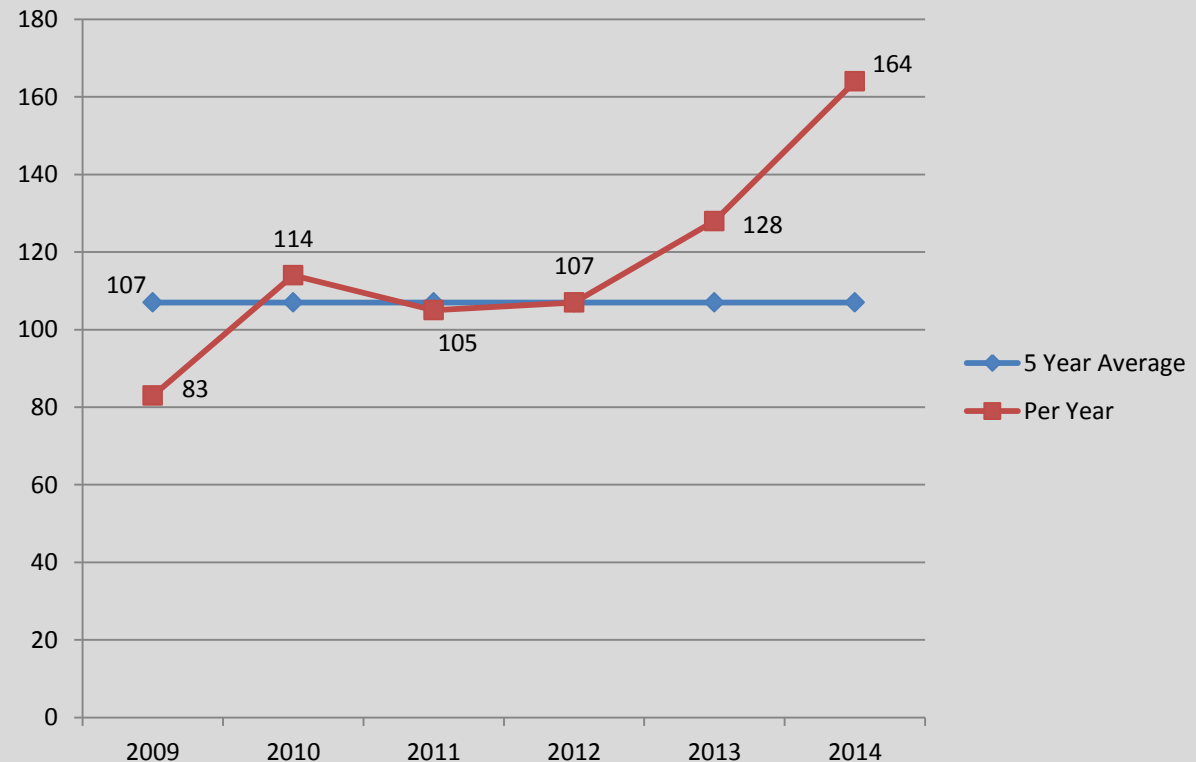
↑ 9%

Compared to 5 Year Avg:

↑ 34%

Month of September Numbers 2009–2014

PROPERTY CRIME



A Closer Look: Part I Violent Crime

Stat Recap:

Since Last Month:

↓ 22%

Compared to 2013
Year-To-Date:

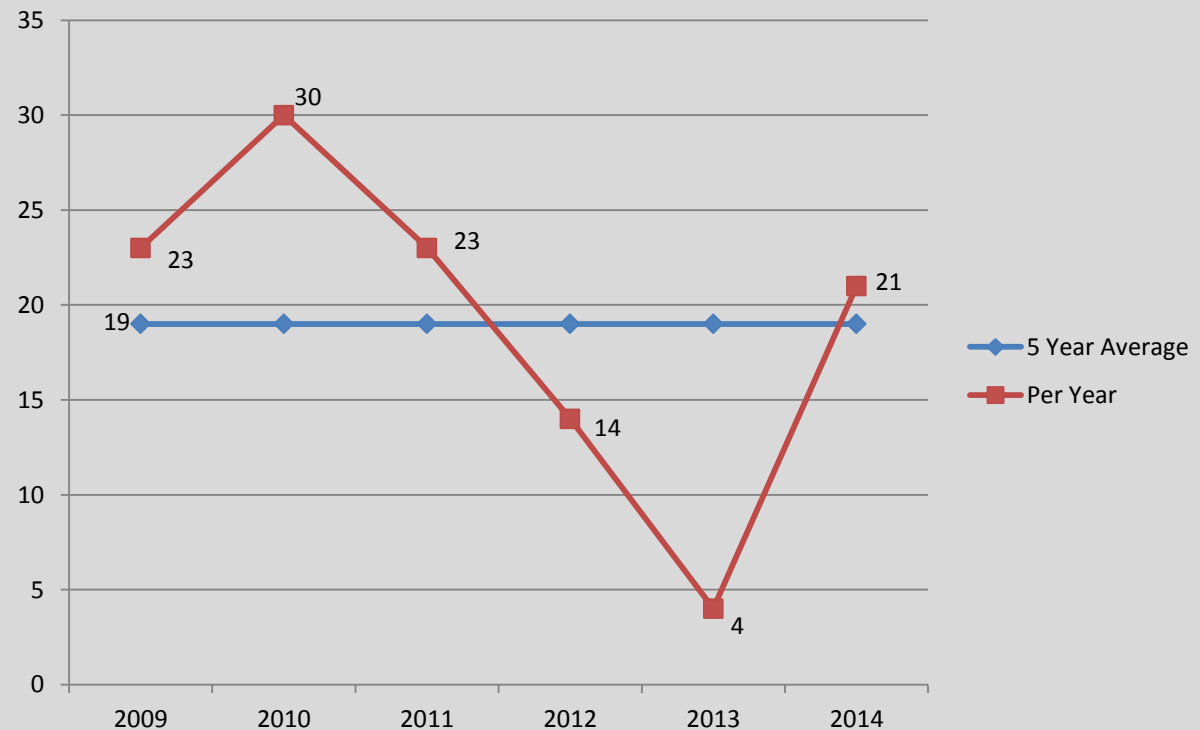
↑ 46%

Compared to 5 Year Avg:

↑ 11%

Month of September Numbers 2009–2014

VIOLENT CRIME



A Closer Look: Burglary

Stat Recap:

Since Last Month:

↑ 4%

Compared to 2013
Year-To-Date:

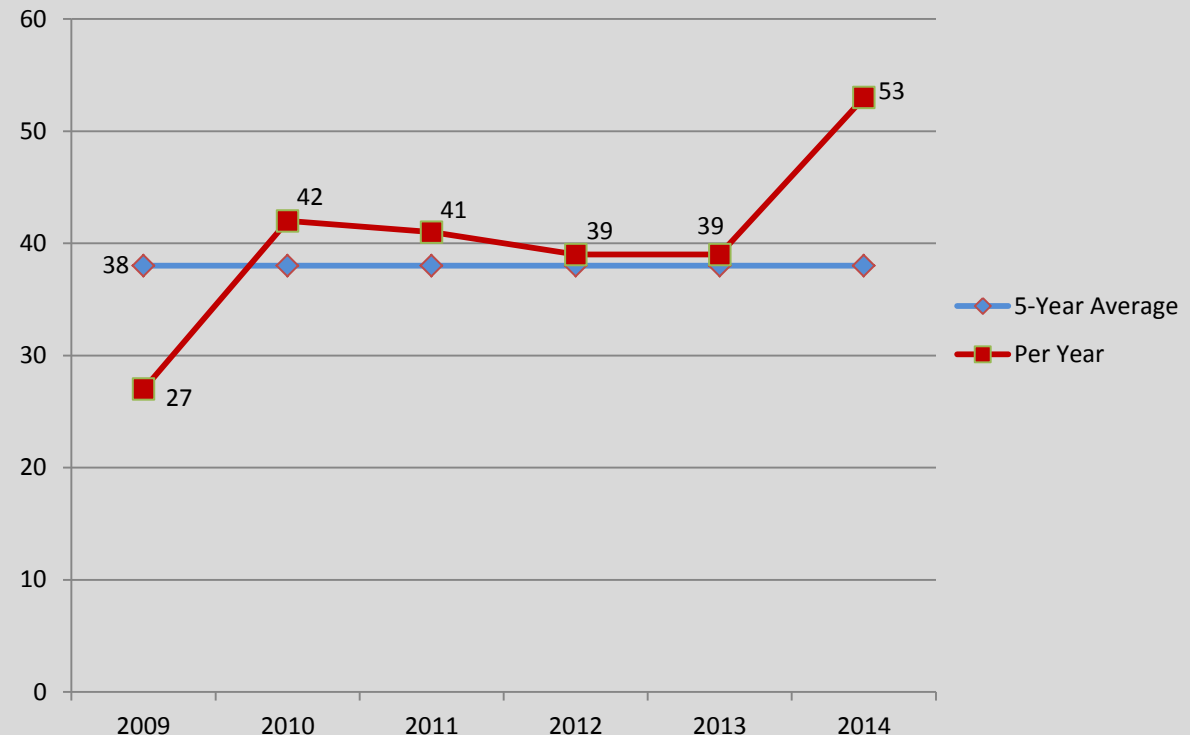
↑ 9%

Compared to 5 Year Avg:

↑ 39%

Month of September Numbers 2009–2014

BURGLARY



A Closer Look: AGGRAVATED ASSAULT

Stat Recap:

Since Last Month:

↓ 25%

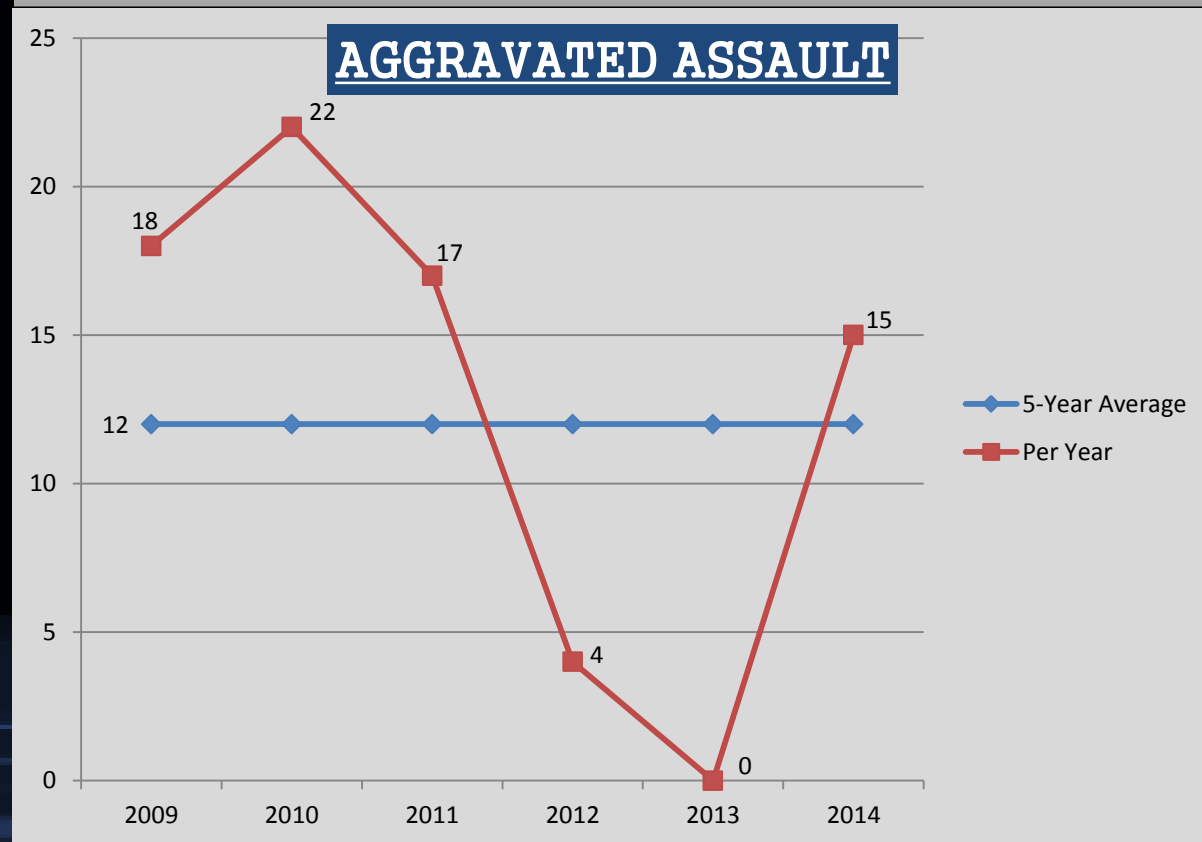
Compared to 2013
Year-To-Date:

↑ 75%

Compared to 5 Year Avg:

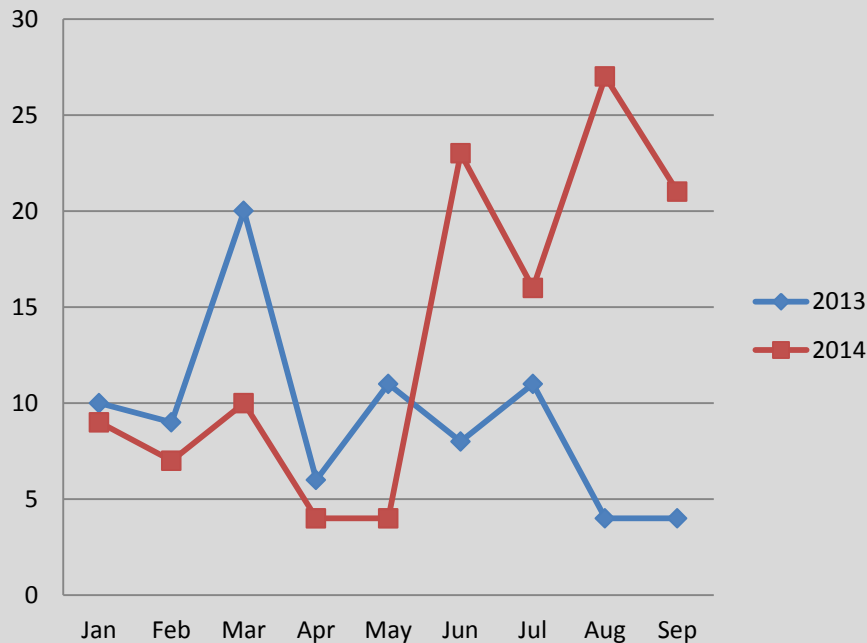
↑ 25%

Month of September Numbers 2009–2014

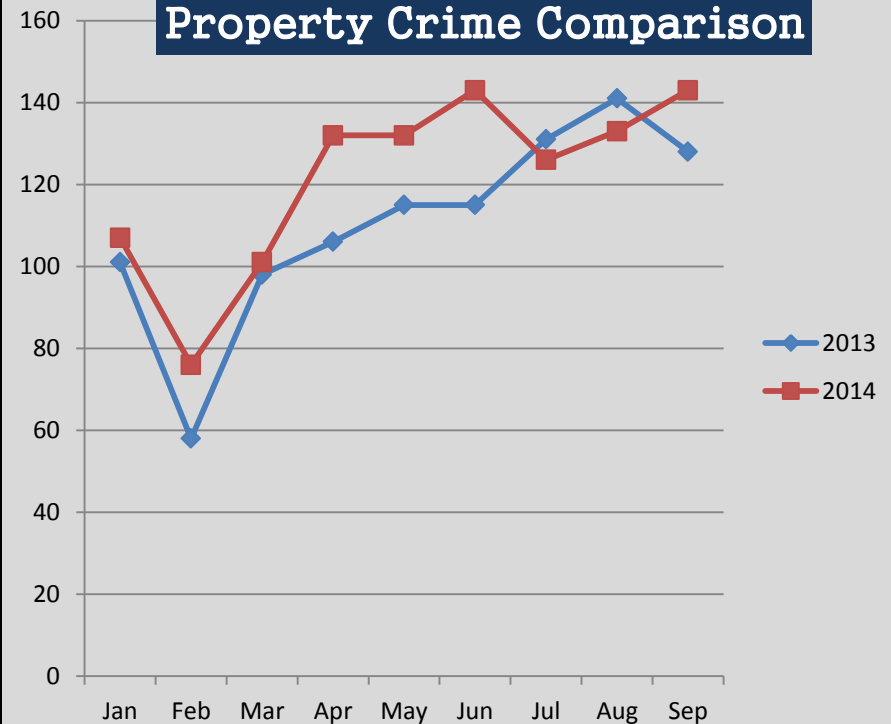


A Closer Look: CHANGING CRIME TRENDS

Violent Crime Comparison



Property Crime Comparison



The charts above help visualize the changing crime trends that we are starting to see in Pittsfield. While Property Crime rates are tending a little higher this year than last year, they are still following the same basic pattern of ups and downs. Starting in June of this year, however, a drastic rise in the number of Violent Crimes is apparent, especially when compared to 2013.