

# Pittsfield Police Department CityStat

## March 2023

*Produced by the Crime Analysis Unit*



# Total Group A Crime

## 4 Weeks

## Year to Date

## 5 Year

	<u>4 Weeks</u>			<u>Year to Date</u>			<u>5 Year</u>	
	Feb-2023	Mar-2023	% Change	2022	2023	% Change	Average	% Change
Total Crimes Against Person	37	42	14%	153	122	-20%	74	-43%
Total Crimes Against Property	61	65	7%	204	191	-6%	123	-47%
Total Crimes Against Society	27	19	-30%	38	96	153%	22	-14%
Total Group A Crime	125	126	1%	395	409	4%	219	-42%

# Crimes Against Person

	4 Week			Year to Date			5 Year	
	Feb-2023	Mar-2023	% Change	2022	2023	% Change	Average	% Change
Murder/ Nonnegligent Manslaughter	0	0	In Calc	1	0	-100%	0	In Calc
Negligent Manslaughter	0	0	In Calc	0	0	In Calc	0	In Calc
Human Trafficking	0	0	In Calc	1	0	-100%	0	In Calc
Kidnapping/ Abduction	0	0	In Calc	0	1	In Calc	0	In Calc
Rape	4	4	0%	13	13	0%	3	33%
Fondling	2	0	-100%	1	2	100%	1	-100%
Consensual Sex Offenses	0	2	In Calc	5	4	-20%	2	0%
Aggravated Assault	18	22	22%	66	55	-17%	24	-8%
Simple Assault	9	10	11%	29	32	10%	35	-71%
Intimidation	4	4	0%	37	15	-59%	8	-50%
<b>Total Crimes Against Person</b>	<b>37</b>	<b>42</b>	<b>14%</b>	<b>153</b>	<b>122</b>	<b>-20%</b>	<b>74</b>	<b>-43%</b>

# Crimes Against Property

	4 Week			Year to Date			5 Year	
	Feb-2023	Mar-2023	% Change	2022	2023	% Change	Average	% Change
Arson	0	0	In Calc	3	0	-100%	0	In Calc
Bribery	0	0	In Calc	0	0	In Calc	0	In Calc
Burglary (B&E)	8	8	0%	38	28	-26%	21	-62%
Counterfeiting/Forgery	3	0	-100%	3	3	0%	6	-100%
Vandalism	18	18	0%	52	55	6%	25	-28%
Embezzlement	0	1	In Calc	0	1	In Calc	1	0%
Extortion/Blackmail	0	0	In Calc	1	0	-100%	0	In Calc
Fraud Offenses	6	6	0%	19	17	-11%	14	-57%
Robbery	2	1	-50%	9	7	-22%	4	-75%
Larceny (Total)	20	27	35%	60	67	12%	41	-34%
Theft from Building	0	9	In Calc	4	9	125%	7	29%
Theft from Motor Vehicle	10	5	-50%	22	18	-18%	6	-17%
Theft from Person	0	0	In Calc	1	0	-100%	1	-100%
Shoplifting	4	5	25%	10	15	50%	7	-29%
Larceny- Miscellaneous	6	8	33%	23	25	9%	20	-60%
Motor Vehicle Theft	3	3	0%	17	11	-35%	7	-57%
Stolen Property Offenses	1	1	0%	2	2	0%	2	-50%
<b>Total Crimes Against Property</b>	<b>61</b>	<b>65</b>	<b>7%</b>	<b>204</b>	<b>191</b>	<b>-6%</b>	<b>123</b>	<b>-47%</b>

# Crimes Against Society

	4 Week			Year to Date			5 Year	
	Feb-2023	Mar-2023	% Change	2022	2023	% Change	Average	% Change
Animal Cruelty	0	0	In Calc	0	0	In Calc	0	In Calc
Drug/Narcotic Offenses	20	11	-45%	18	53	194%	11	0%
Gambling Offenses	0	0	In Calc	0	0	In Calc	0	In Calc
Prostitution Offenses	0	0	In Calc	0	0	In Calc	0	In Calc
Weapon Law Violations	7	8	14%	20	43	115%	10	-20%
<b>Total Crimes Against Society</b>	<b>27</b>	<b>19</b>	<b>-30%</b>	<b>38</b>	<b>96</b>	<b>153%</b>	<b>22</b>	<b>-14%</b>

# A Closer Look: Crimes Against Person with Trendline

## Stat Recap:

Since Last Month:

↑ 14%

Compared to 2022  
Year-To-Date:

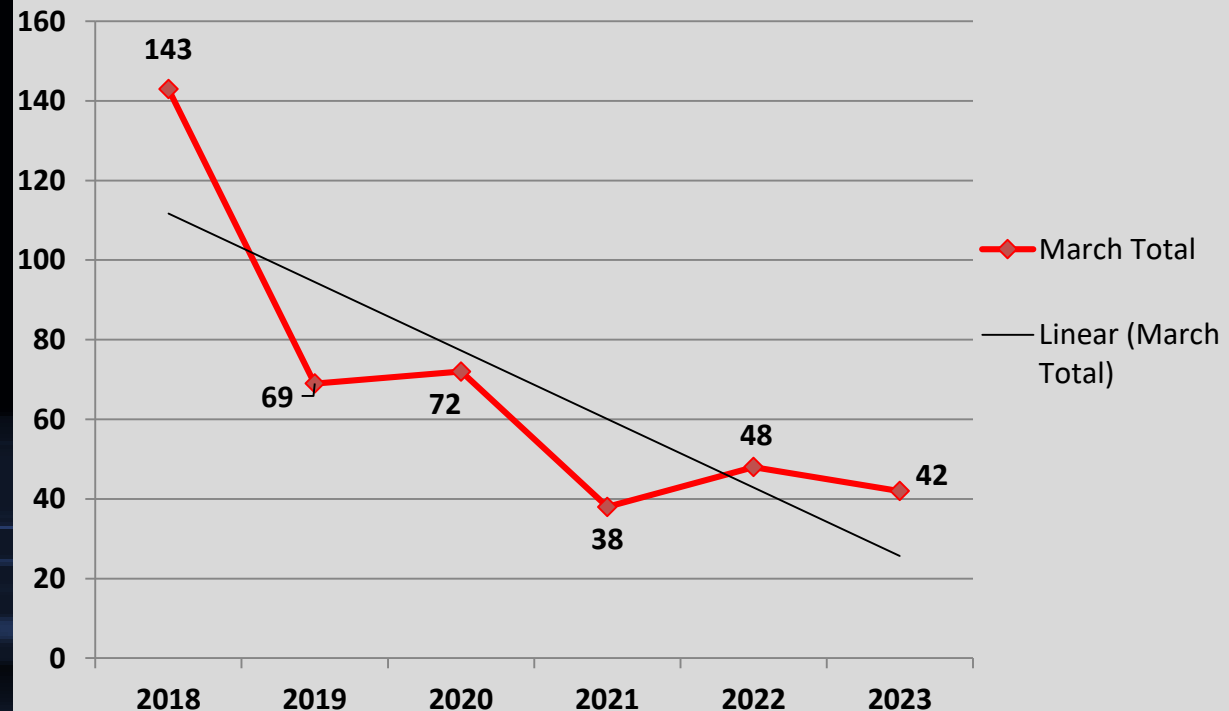
↓ 20%

Compared to 5 Year Avg:

↓ 43%

## Month of March Numbers 2018-2023

### Crimes Against Person



# A Closer Look: Crimes Against Property with Trendline

## Stat Recap:

Since Last Month:

↑ 7%

Compared to 2022  
Year-to-Date:

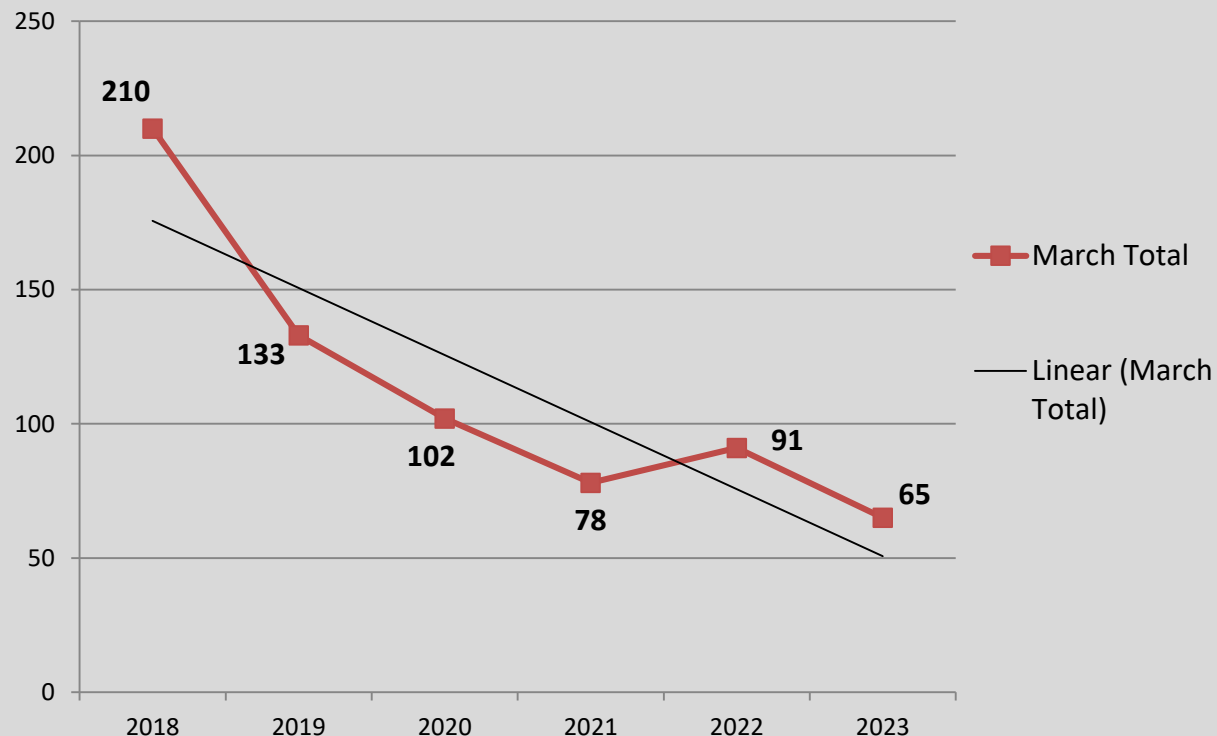
↓ 6%

Compared to 5 Year Avg:

↓ 47%

## Month of March Numbers 2018-2023

### Crimes Against Property



# A Closer Look: Crimes Against Society with Trendline

## Stat Recap:

Since Last Month:

↓ 30%

Compared to 2022  
Year-to-Date:

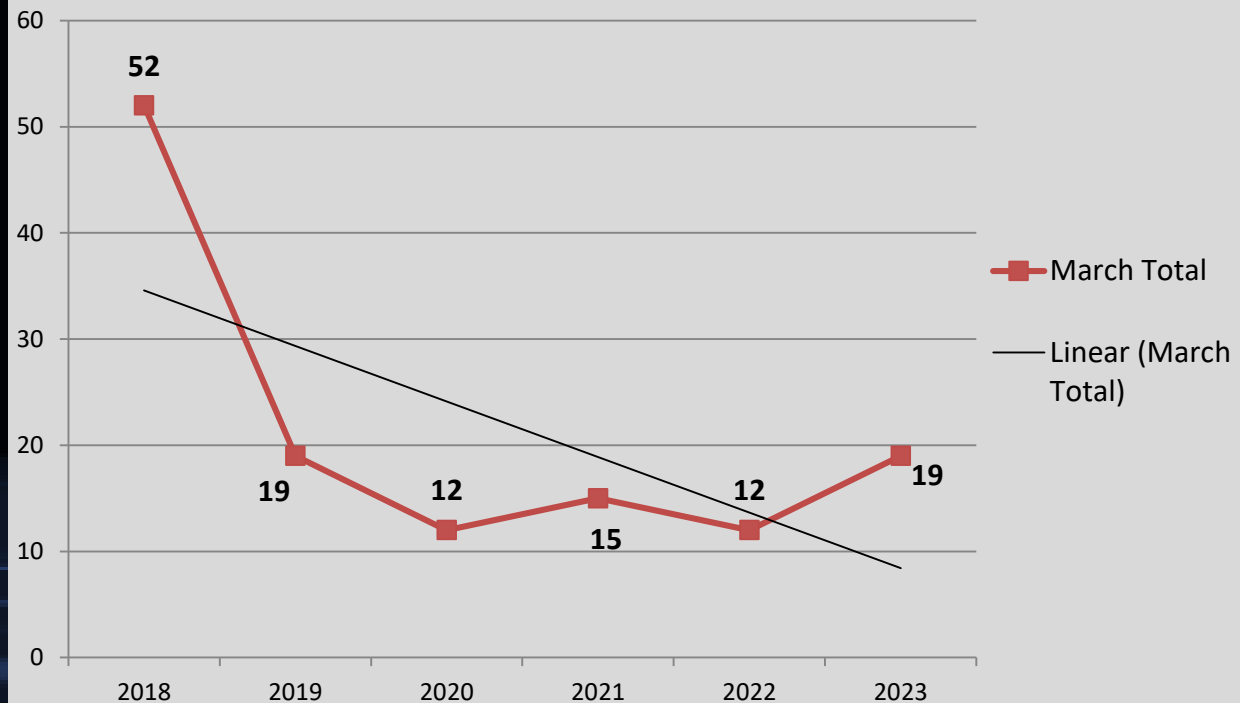
↑ 153%

Compared to 5 Year Avg:

↓ 14%

## Month of March Numbers 2018-2023

### Crimes Against Society





# A Closer Look: Burglary with Trendline

## Stat Recap:

Since Last Month:  
**0%**

Compared to 2022  
Year-To-Date:

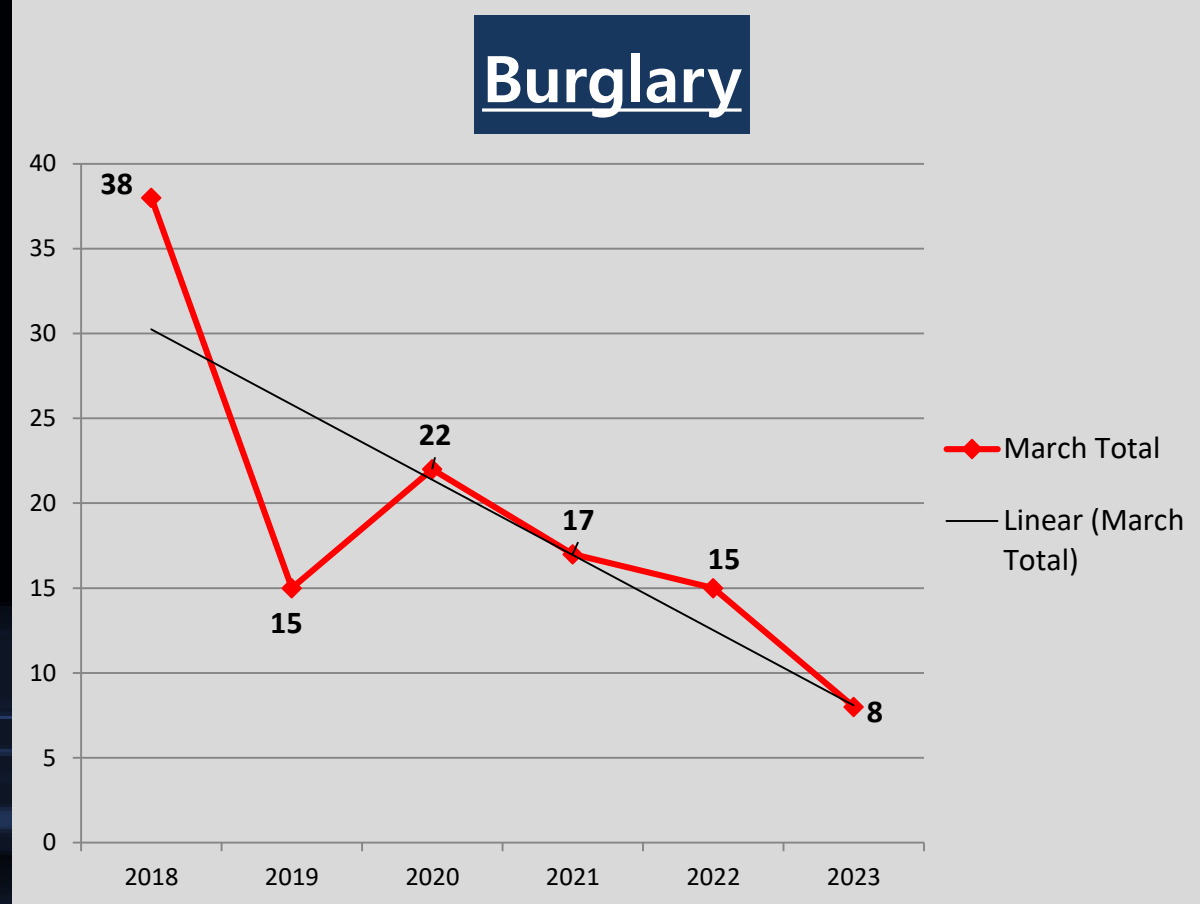
**↓ 26%**

Compared to 5 Year Avg:

**↓ 62%**

## Month of March Numbers 2018-2023

### Burglary



# A Closer Look: Larceny with Trendline

## Stat Recap:

Since Last Month:

↑ 35%

Compared to 2022  
Year-To-Date:

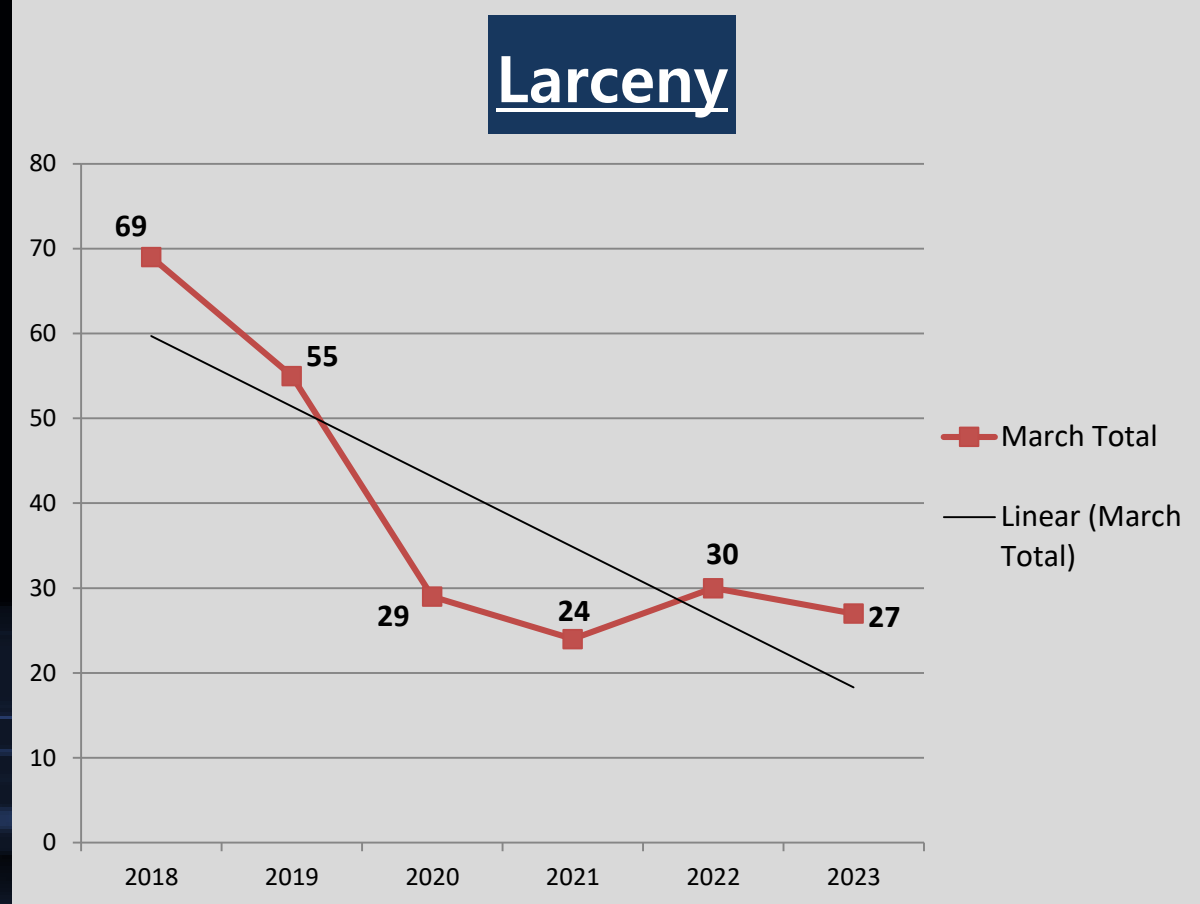
↑ 12%

Compared to 5 Year Avg:

↓ 34%

## Month of March Numbers 2018-2023

### Larceny



# A Closer Look: Aggravated Assault with Trendline

## Stat Recap:

Since Last Month:

↑ 22%

Compared to 2022  
Year-To-Date:

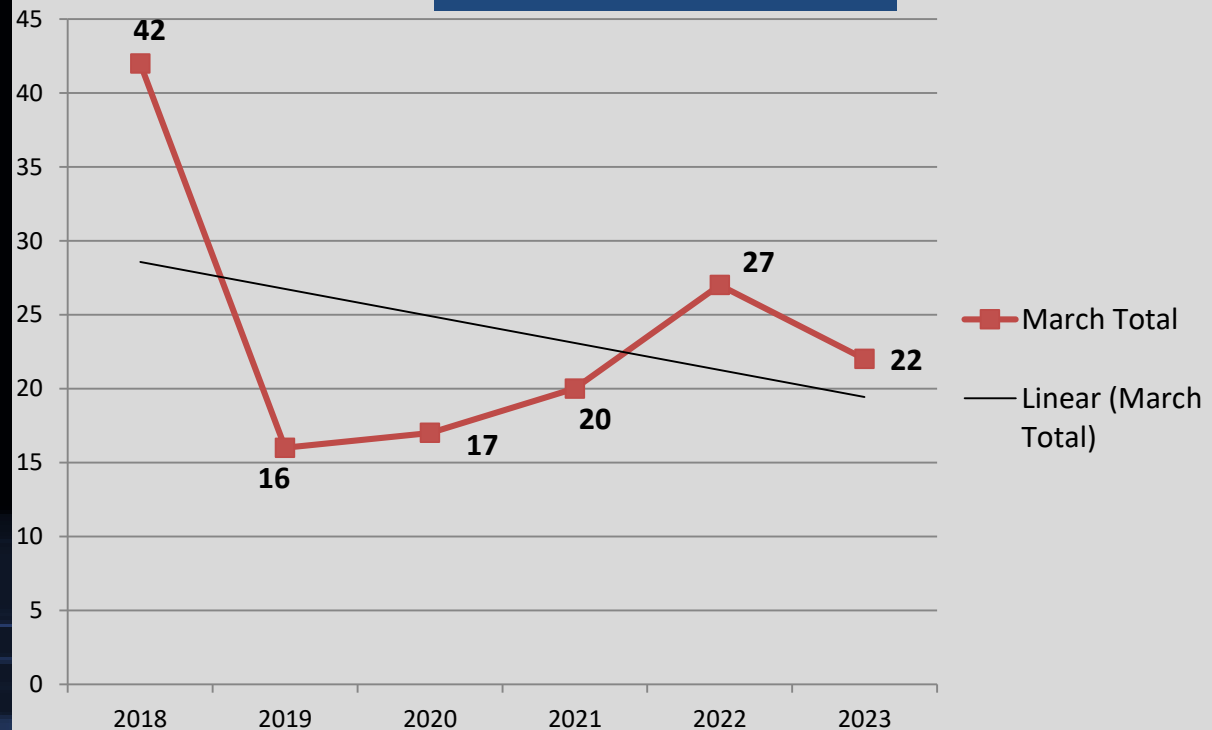
↓ 17%

Compared to 5 Year Avg:

↓ 8%

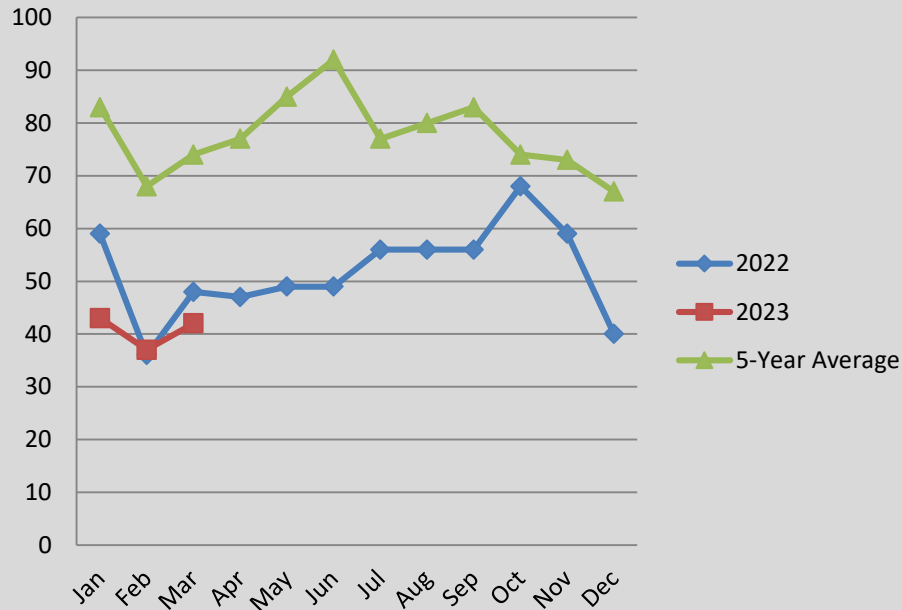
## Month of March Numbers 2018-2023

### Aggravated Assault

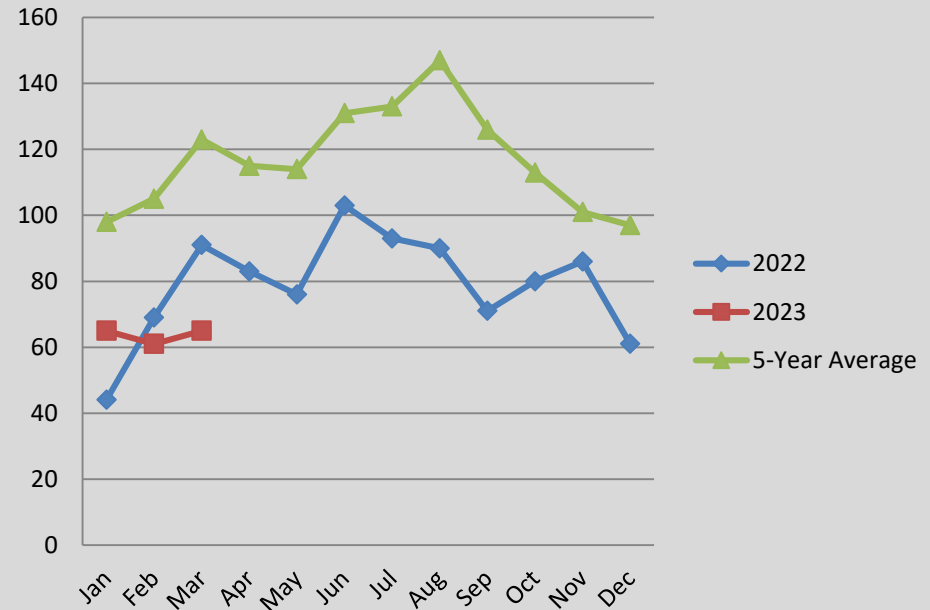


# A Closer Look: CHANGING CRIME TRENDS

## Crimes Against Person Comparison



## Crimes Against Property Comparison



The charts above help visualize the changing crime trends that we are seeing in Pittsfield, as well as what we may anticipate for the future.