

Pittsfield Police Department CityStat

May 2023

Produced by the Crime Analysis Unit



Total Group A Crime

4 Weeks

Year to Date

5 Year

	<u>4 Weeks</u>			<u>Year to Date</u>			<u>5 Year</u>	
	Apr-2023	May-2023	% Change	2022	2023	% Change	Average	% Change
Total Crimes Against Person	48	67	40%	249	237	-5%	85	-21%
Total Crimes Against Property	59	64	8%	363	314	-13%	114	-44%
Total Crimes Against Society	13	8	-38%	97	117	21%	24	-67%
Total Group A Crime	120	139	16%	709	668	-6%	223	-38%

Crimes Against Person

	4 Week			Year to Date			5 Year	
	Apr-2023	May-2023	% Change	2022	2023	% Change	Average	% Change
Murder/ Nonnegligent Manslaughter	0	0	In Calc	2	0	-100%	0	In Calc
Negligent Manslaughter	0	0	In Calc	0	0	In Calc	0	In Calc
Human Trafficking	0	0	In Calc	1	0	-100%	0	In Calc
Kidnapping/ Abduction	0	2	In Calc	1	3	200%	0	In Calc
Rape	3	8	167%	16	24	50%	2	300%
Fondling	1	0	-100%	3	3	0%	1	-100%
Consensual Sex Offenses	3	2	-33%	10	9	-10%	1	100%
Aggravated Assault	22	27	23%	117	104	-11%	27	0%
Simple Assault	10	18	80%	52	60	15%	42	-57%
Intimidation	9	10	11%	47	34	-28%	12	-17%
Total Crimes Against Person	48	67	40%	249	237	-5%	85	-21%

Crimes Against Property

	4 Week			Year to Date			5 Year	
	Apr-2023	May-2023	% Change	2022	2023	% Change	Average	% Change
Arson	1	0	-100%	4	1	-75%	0	In Calc
Bribery	0	0	In Calc	0	0	In Calc	0	In Calc
Burglary (B&E)	12	9	-25%	74	49	-34%	23	-61%
Counterfeiting/Forgery	0	4	In Calc	11	7	-36%	3	33%
Vandalism	15	12	-20%	94	82	-13%	36	-67%
Embezzlement	0	1	In Calc	0	2	In Calc	1	0%
Extortion/Blackmail	0	0	In Calc	1	0	-100%	0	In Calc
Fraud Offenses	8	9	13%	33	34	3%	8	13%
Robbery	0	2	In Calc	13	9	-31%	1	100%
Larceny (Total)	20	23	15%	100	110	10%	34	-32%
Theft from Building	0	1	In Calc	6	10	67%	4	-175%
Theft from Motor Vehicle	2	2	0%	28	22	-21%	4	-50%
Theft from Person	0	0	In Calc	1	0	-100%	1	-100%
Shoplifting	7	7	0%	21	29	38%	8	-13%
Larceny- Miscellaneous	11	13	18%	44	49	11%	18	-28%
Motor Vehicle Theft	1	3	200%	24	15	-38%	5	-40%
Stolen Property Offenses	2	1	-50%	9	5	-44%	3	-67%
Total Crimes Against Property	59	64	8%	363	314	-13%	114	-44%

Crimes Against Society

	4 Week			Year to Date			5 Year	
	Apr-2023	May-2023	% Change	2022	2023	% Change	Average	% Change
Animal Cruelty	0	0	In Calc	0	0	In Calc	0	In Calc
Drug/Narcotic Offenses	7	7	0%	41	67	63%	12	-42%
Gambling Offenses	0	0	In Calc	0	0	In Calc	0	In Calc
Prostitution Offenses	0	0	In Calc	0	0	In Calc	0	In Calc
Weapon Law Violations	6	1	-83%	56	50	-11%	12	-92%
Total Crimes Against Society	13	8	-38%	97	117	21%	24	-67%

A Closer Look: Crimes Against Person with Trendline

Stat Recap:

Since Last Month:

↑ 40%

Compared to 2022
Year-To-Date:

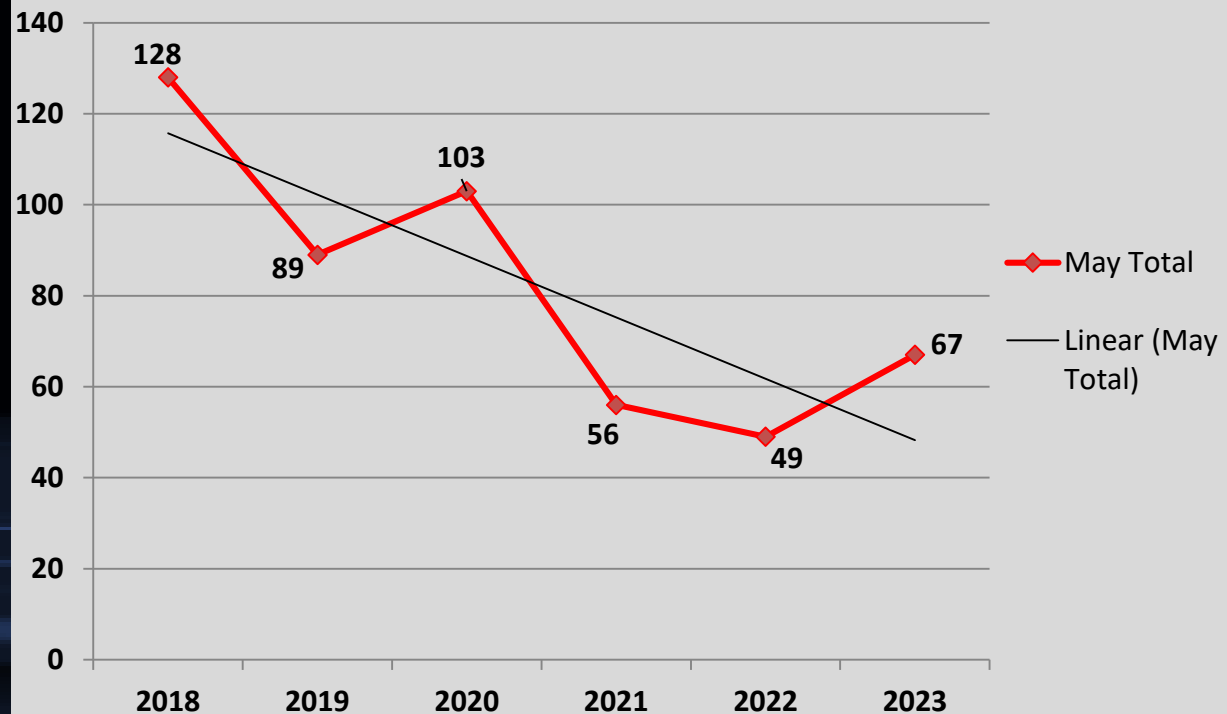
↓ 5%

Compared to 5 Year Avg:

↓ 21%

Month of May Numbers 2018-2023

Crimes Against Person



A Closer Look: Crimes Against Property with Trendline

Stat Recap:

Since Last Month:

↑ 8%

Compared to 2022
Year-to-Date:

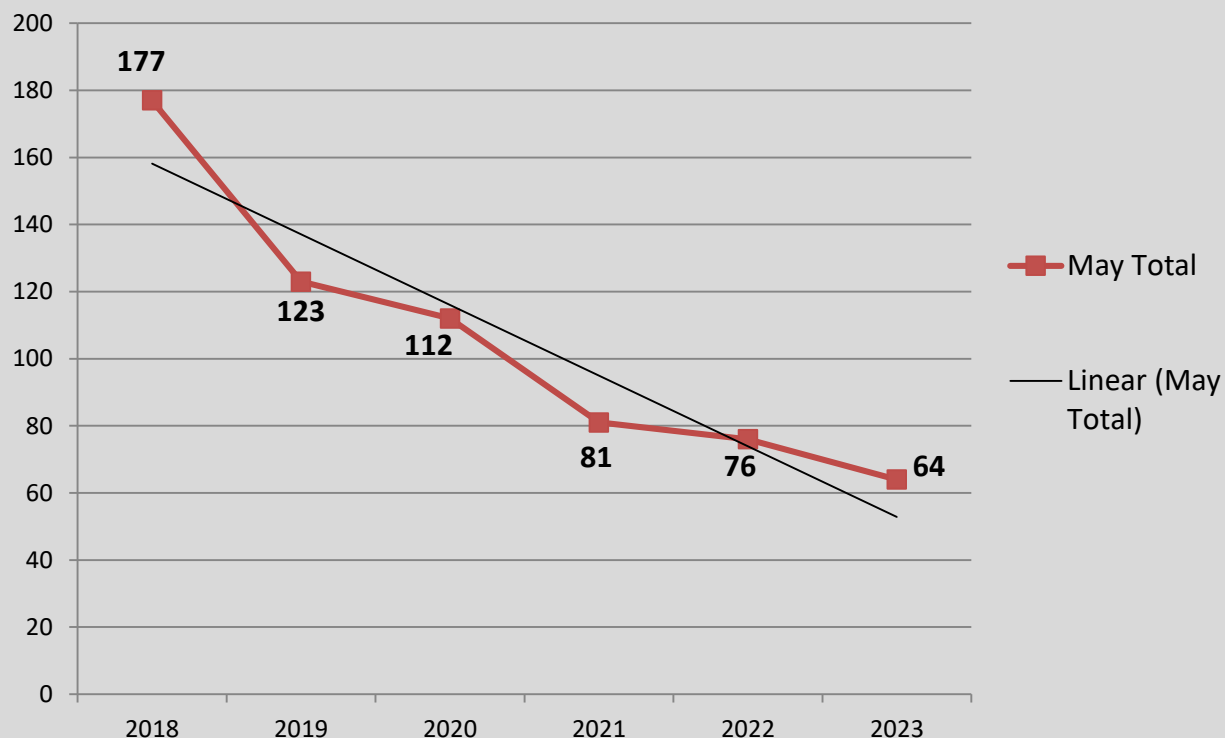
↓ 13%

Compared to 5 Year Avg:

↓ 44%

Month of May Numbers 2018-2023

Crimes Against Property



A Closer Look: Crimes Against Society with Trendline

Stat Recap:

Since Last Month:

↓ 38%

Compared to 2022
Year-to-Date:

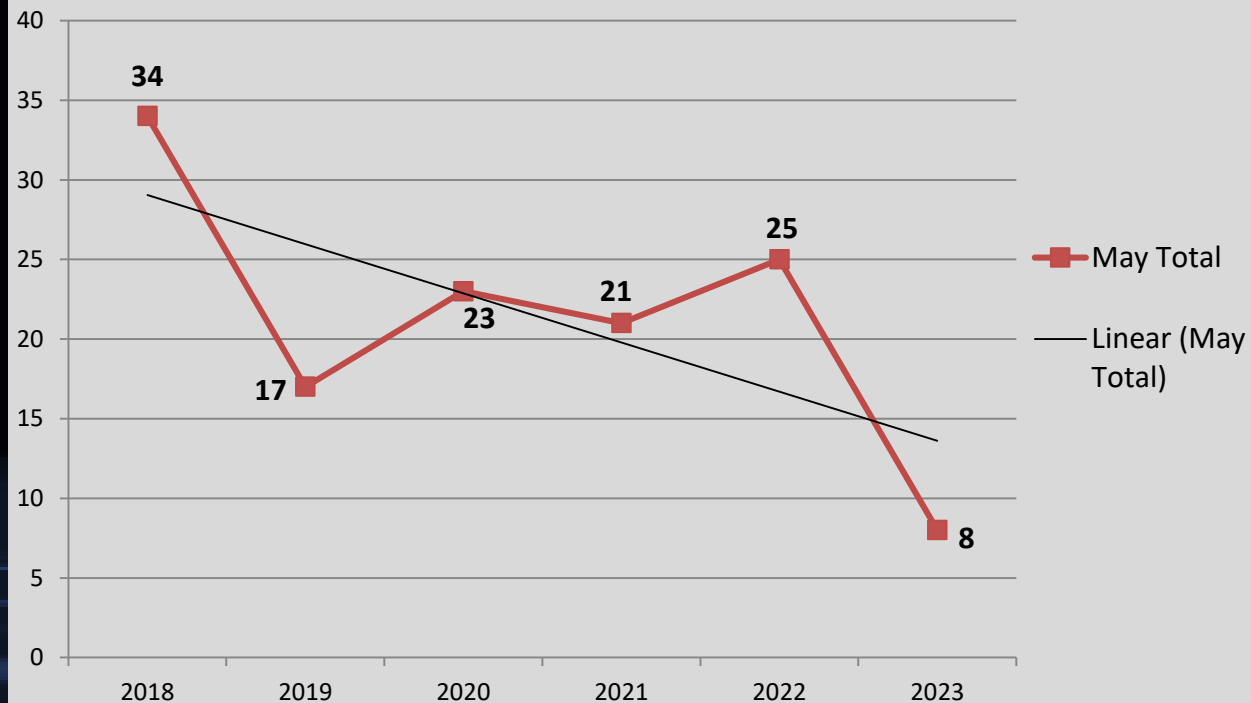
↑ 21%

Compared to 5 Year Avg:

↓ 67%

Month of May Numbers 2018-2023

Crimes Against Society



A Closer Look: Burglary with Trendline

Stat Recap:

Since Last Month:

↓ 25%

Compared to 2022
Year-To-Date:

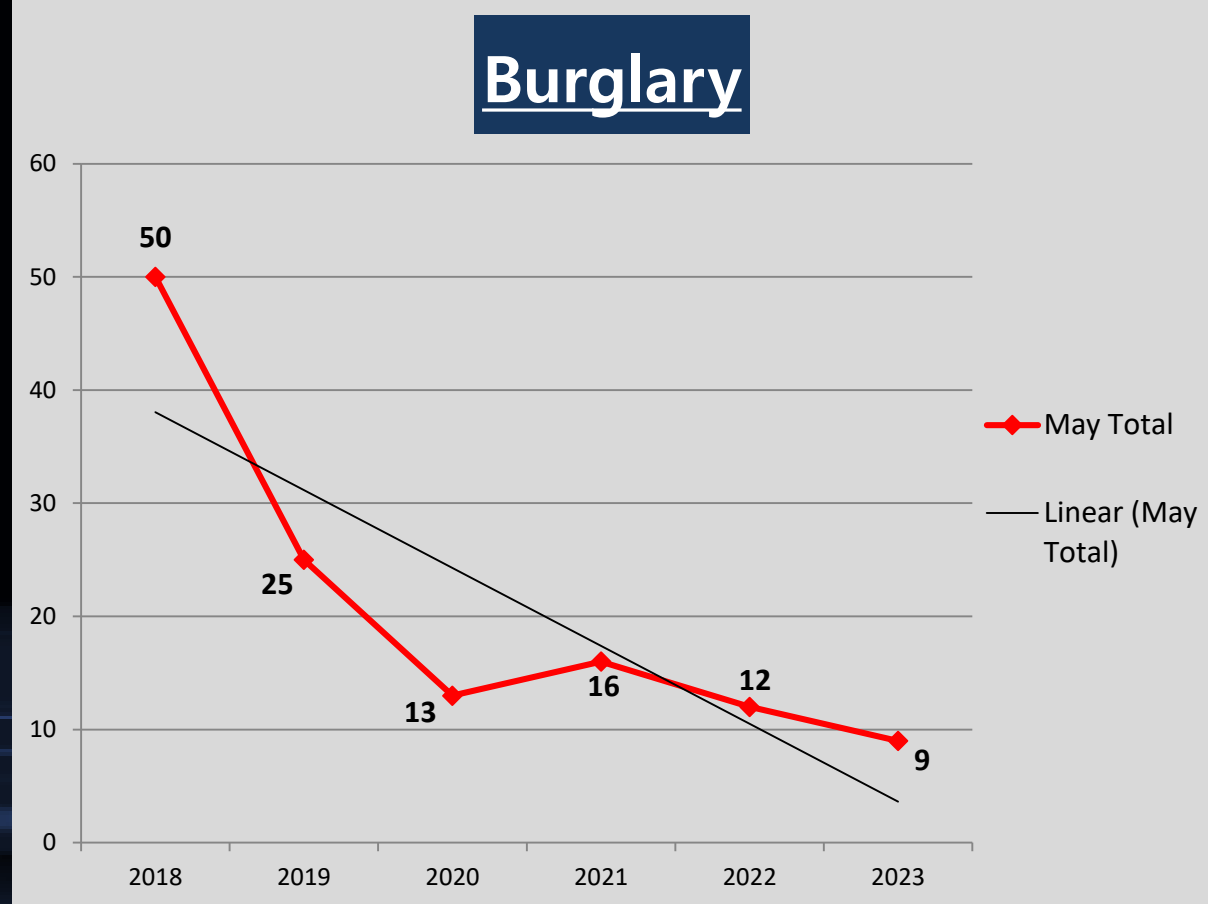
↓ 34%

Compared to 5 Year Avg:

↓ 61%

Month of May Numbers 2018-2023

Burglary



A Closer Look: Larceny with Trendline

Stat Recap:

Since Last Month:

↑ 15%

Compared to 2022
Year-To-Date:

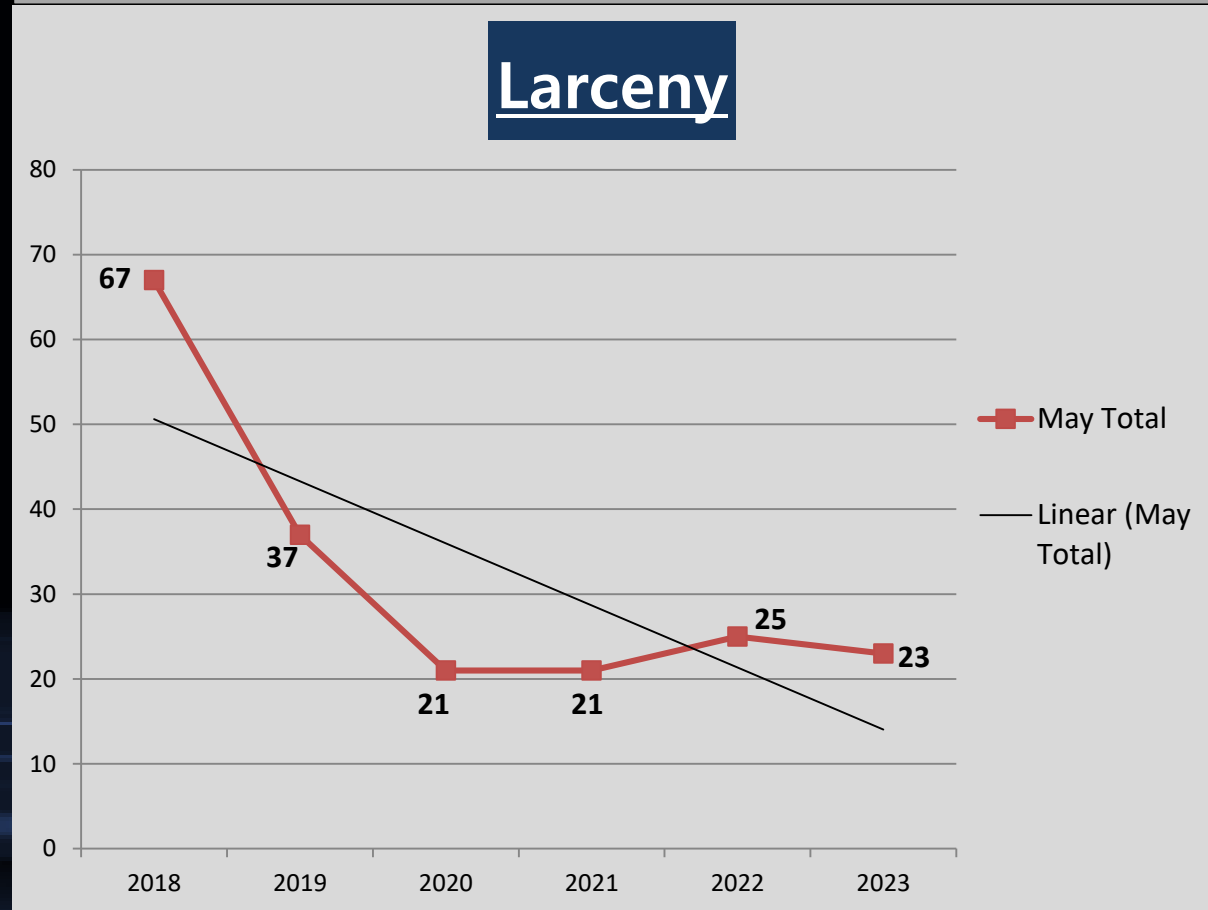
↑ 10%

Compared to 5 Year Avg:

↓ 32%

Month of May Numbers 2018-2023

Larceny



A Closer Look: Aggravated Assault with Trendline

Stat Recap:

Since Last Month:

↑ 23%

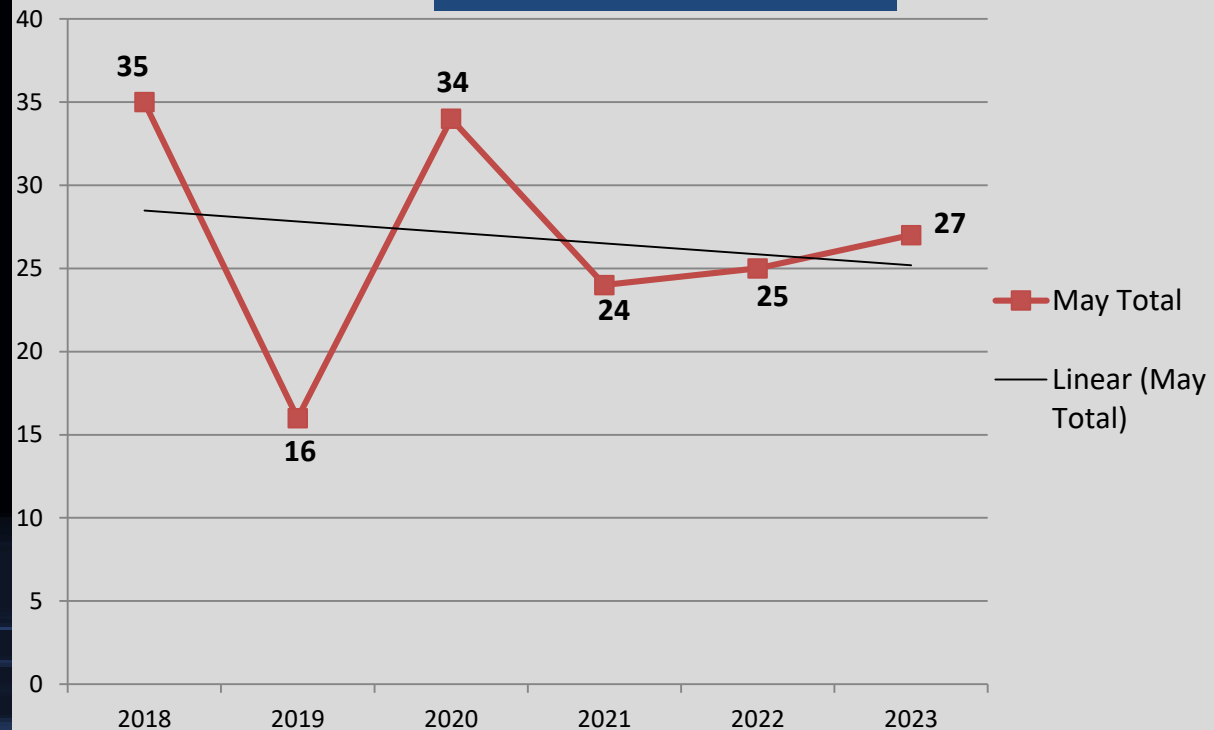
Compared to 2022
Year-To-Date:

↓ 11%

Compared to 5 Year Avg:
0%

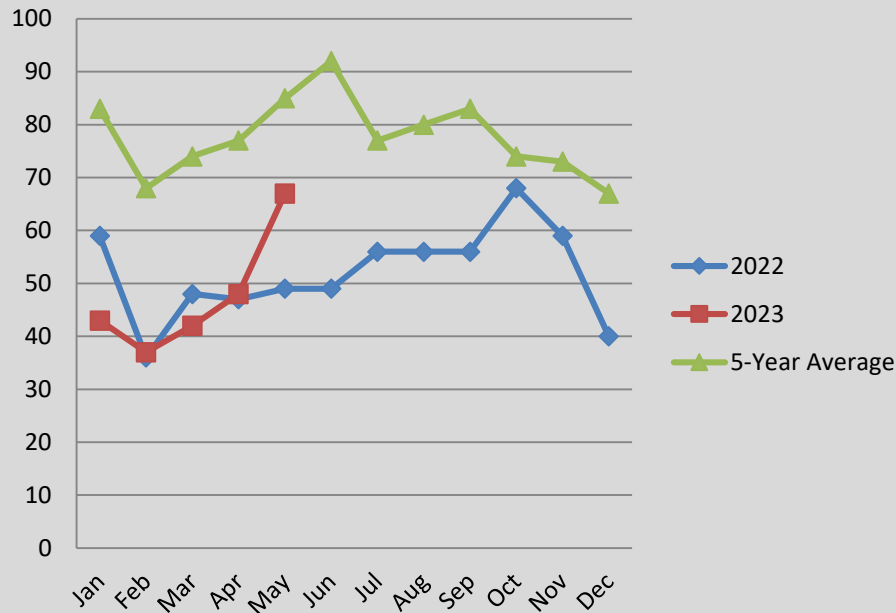
Month of April Numbers 2018-2023

Aggravated Assault

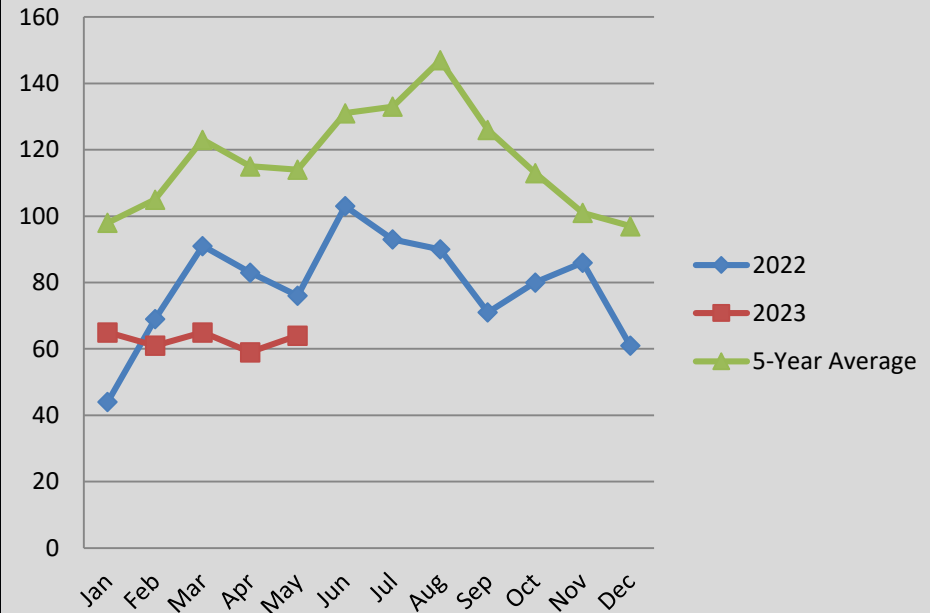


A Closer Look: CHANGING CRIME TRENDS

Crimes Against Person Comparison



Crimes Against Property Comparison



The charts above help visualize the changing crime trends that we are seeing in Pittsfield, as well as what we may anticipate for the future.