

# Pittsfield Police Department CityStat

## January 2024

*Produced by the Crime Analysis Unit*



# Total Group A Crime

## 4 Weeks

## Year to Date

## 5 Year

	Dec-2023	Jan-2024	% Change		2023	2024	% Change		Average	% Change
Total Crimes Against Person	35	36	3%		43	36	-16%		72	-50%
Total Crimes Against Property	43	60	40%		65	60	-8%		79	-24%
Total Crimes Against Society	7	16	129%		50	16	-68%		28	-43%
Total Group A Crime	85	112	32%		158	112	-29%		179	-37%

# Crimes Against Person

	4 Week			Year to Date			5 Year	
	Dec-2023	Jan-2024	% Change	2023	2024	% Change	Average	% Change
Murder/ Nonnegligent Manslaughter	0	0	In Calc	0	0	In Calc	0	In Calc
Negligent Manslaughter	0	0	In Calc	0	0	In Calc	0	In Calc
Human Trafficking	0	0	In Calc	0	0	In Calc	0	In Calc
Kidnapping/ Abduction	0	0	In Calc	1	0	-100%	1	-100%
Rape	1	2	100%	5	2	-60%	4	-50%
Fondling	0	1	In Calc	0	1	In Calc	2	-50%
Consensual Sex Offenses	4	0	-100%	2	0	-100%	2	-100%
Aggravated Assault	13	13	0%	15	13	-13%	21	-38%
Simple Assault	9	13	44%	13	13	0%	32	-59%
Intimidation	8	7	-13%	7	7	0%	10	-30%
<b>Total Crimes Against Person</b>	<b>35</b>	<b>36</b>	<b>3%</b>	<b>43</b>	<b>36</b>	<b>-16%</b>	<b>72</b>	<b>-50%</b>

# Crimes Against Property

	4 Week			Year to Date			5 Year	
	Dec-2023	Jan-2024	% Change	2023	2024	% Change	Average	% Change
Arson	1	0	-100%	0	0	In Calc	1	-100%
Bribery	0	0	In Calc	0	0	In Calc	0	In Calc
Burglary (B&E)	5	8	60%	12	8	-33%	12	-33%
Counterfeiting/Forgery	3	4	33%	0	4	In Calc	2	100%
Vandalism	18	14	-22%	19	14	-26%	21	-33%
Embezzlement	0	0	In Calc	0	0	In Calc	0	In Calc
Extortion/Blackmail	0	0	In Calc	0	0	In Calc	0	In Calc
Fraud Offenses	2	6	200%	5	6	20%	11	-45%
Robbery	0	0	In Calc	4	0	-100%	4	-100%
Larceny (Total)	10	23	130%	20	23	15%	23	0%
Theft from Building	0	1	In Calc	0	1	In Calc	2	-50%
Theft from Motor Vehicle	2	4	100%	3	4	33%	3	33%
Theft from Person	0	0	In Calc	0	0	In Calc	1	-100%
Shoplifting	3	6	100%	6	6	0%	5	20%
Larceny- Miscellaneous	5	12	140%	11	12	9%	12	0%
Motor Vehicle Theft	3	4	33%	5	4	-20%	3	33%
Stolen Property Offenses	1	1	0%	0	1	In Calc	1	0%
<b>Total Crimes Against Property</b>	<b>43</b>	<b>60</b>	<b>40%</b>	<b>65</b>	<b>60</b>	<b>-8%</b>	<b>79</b>	<b>-24%</b>

# Crimes Against Society

	4 Week			Year to Date			5 Year	
	Dec-2023	Jan-2024	% Change	2023	2024	% Change	Average	% Change
Animal Cruelty	0	0	In Calc	0	0	In Calc	0	In Calc
Drug/Narcotic Offenses	6	11	83%	22	11	-50%	14	-21%
Gambling Offenses	0	0	In Calc	0	0	In Calc	0	In Calc
Prostitution Offenses	0	0	In Calc	0	0	In Calc	0	In Calc
Weapon Law Violations	1	5	400%	28	5	-82%	14	-64%
<b>Total Crimes Against Society</b>	<b>7</b>	<b>16</b>	<b>129%</b>	<b>50</b>	<b>16</b>	<b>-68%</b>	<b>28</b>	<b>-43%</b>

# A Closer Look: Crimes Against Person with Trendline

## Stat Recap:

Since Last Month:

↑ 3%

Compared to 2023  
Year-To-Date:

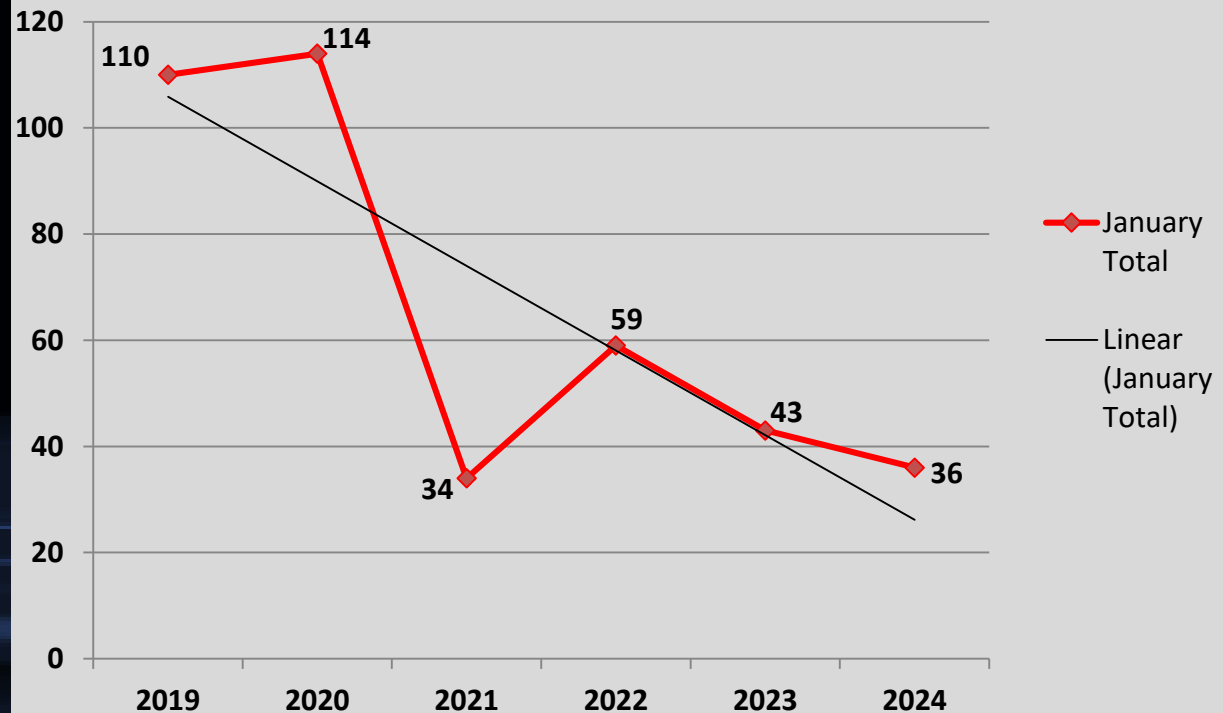
↓ 16%

Compared to 5 Year Avg:

↓ 50%

## Month of January Numbers 2019-2024

### Crimes Against Person



# A Closer Look: Crimes Against Property with Trendline

## Stat Recap:

Since Last Month:

**↑ 40%**

Compared to 2023  
Year-to-Date:

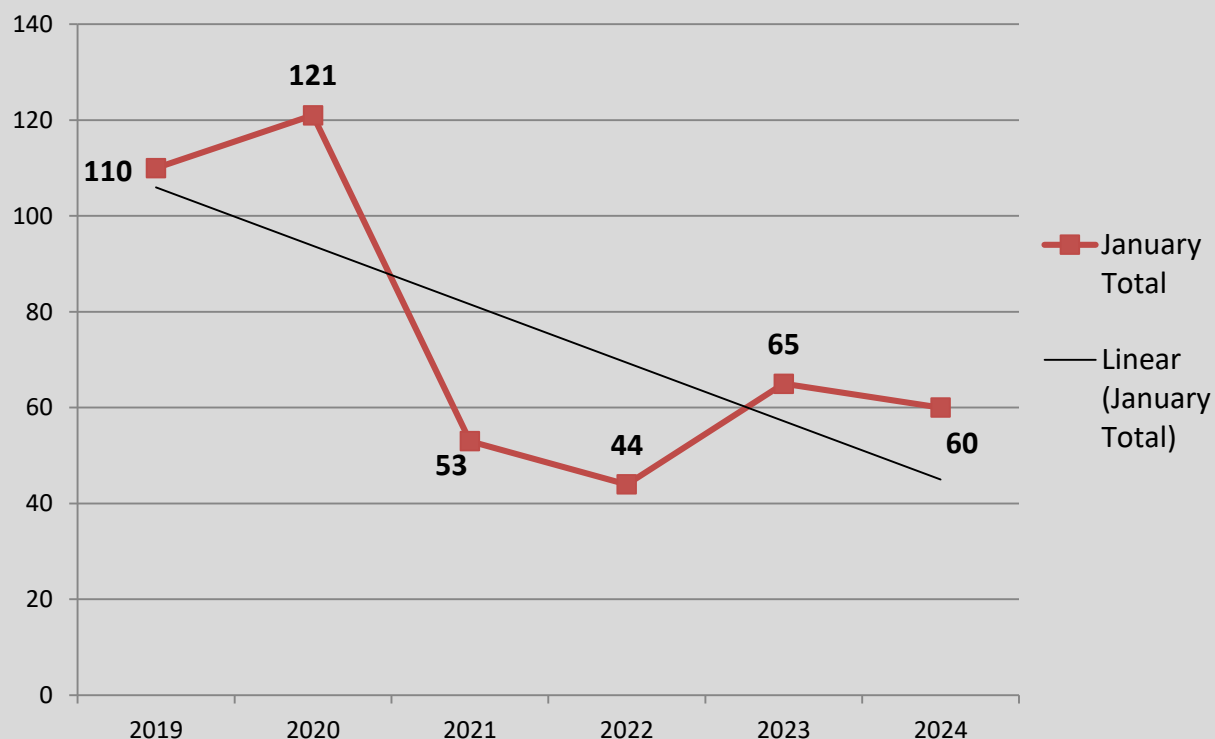
**↓ 8%**

Compared to 5 Year Avg:

**↓ 24%**

## Month of January Numbers 2019-2024

### Crimes Against Property



# A Closer Look: Crimes Against Society with Trendline

## Stat Recap:

Since Last Month:

↑ 129%

Compared to 2023  
Year-to-Date:

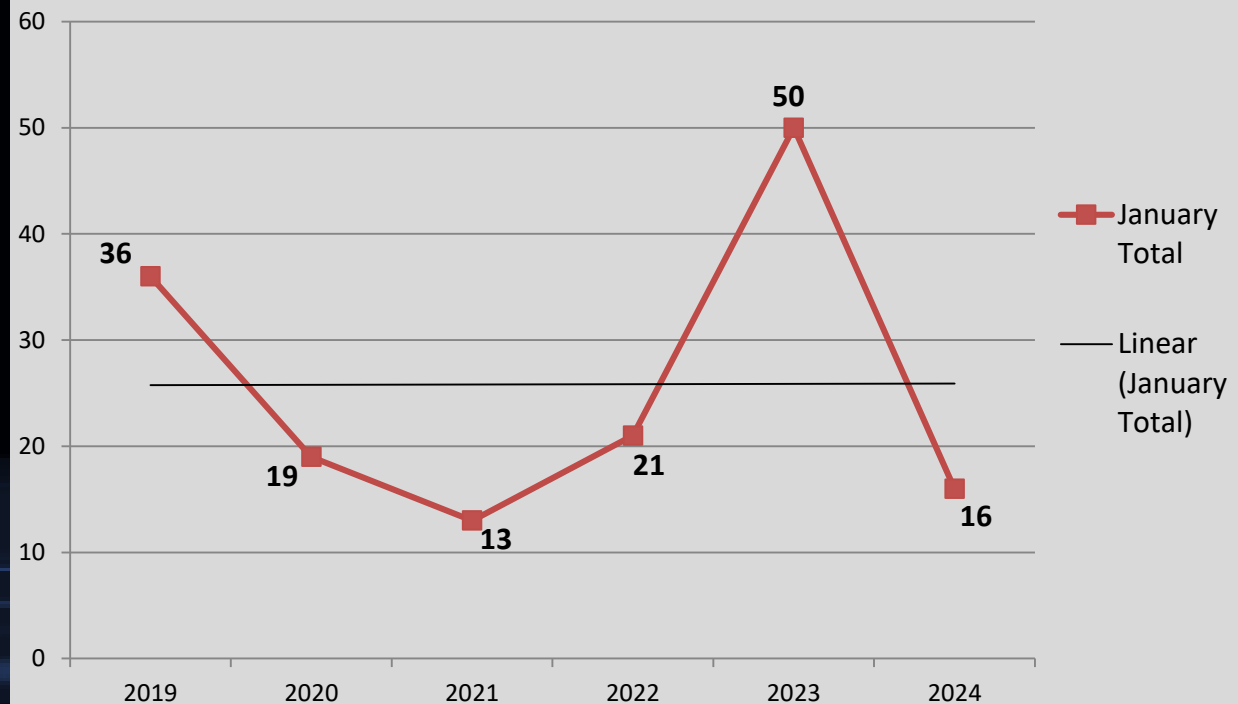
↓ 68%

Compared to 5 Year Avg:

↓ 43%

## Month of January Numbers 2019-2024

### Crimes Against Society





# A Closer Look: Burglary with Trendline

## Stat Recap:

Since Last Month:

↑ 60%

Compared to 2023  
Year-To-Date:

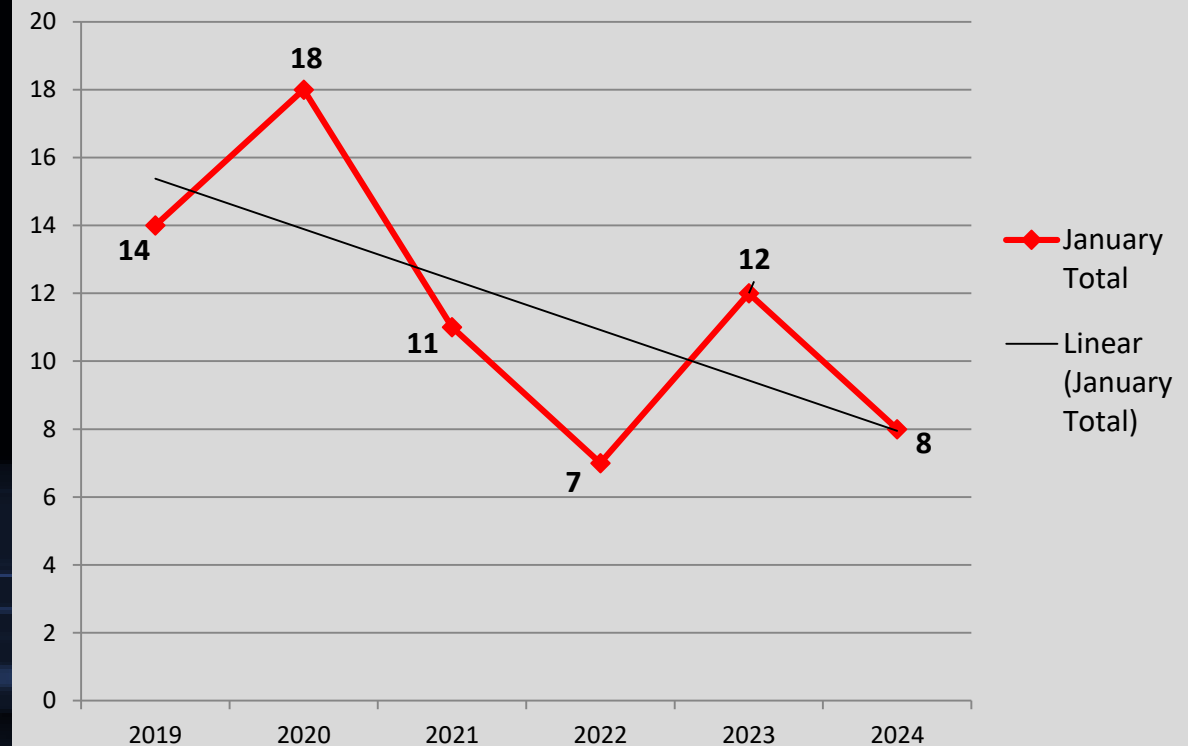
↓ 33%

Compared to 5 Year Avg:

↓ 33%

## Month of January Numbers 2019-2024

### Burglary



# A Closer Look: Larceny with Trendline

## Stat Recap:

Since Last Month:

↑ 130%

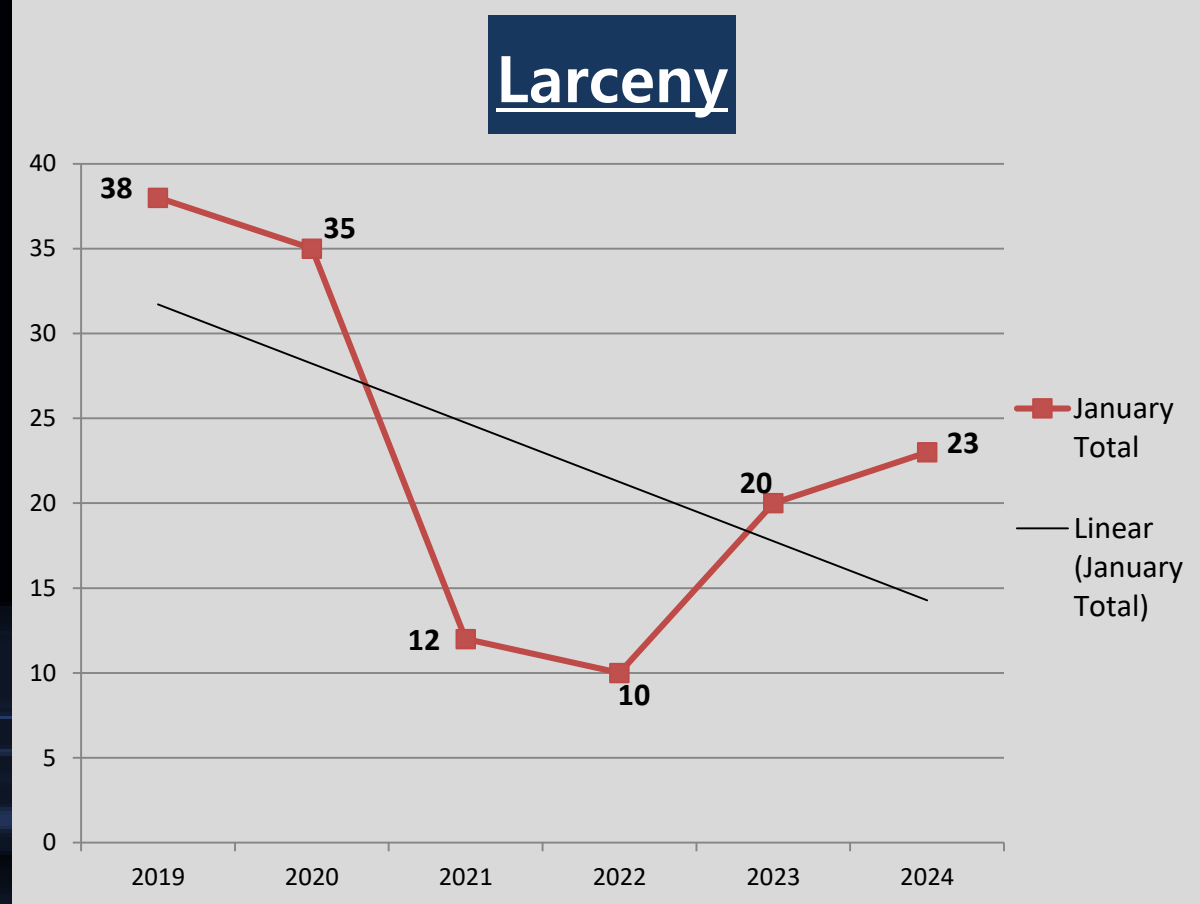
Compared to 2023  
Year-To-Date:

↑ 15%

Compared to 5 Year Avg:  
0%

## Month of January Numbers 2019-2024

### Larceny



# A Closer Look: Aggravated Assault with Trendline

## Stat Recap:

Since Last Month:  
**0%**

Compared to 2023  
Year-To-Date:

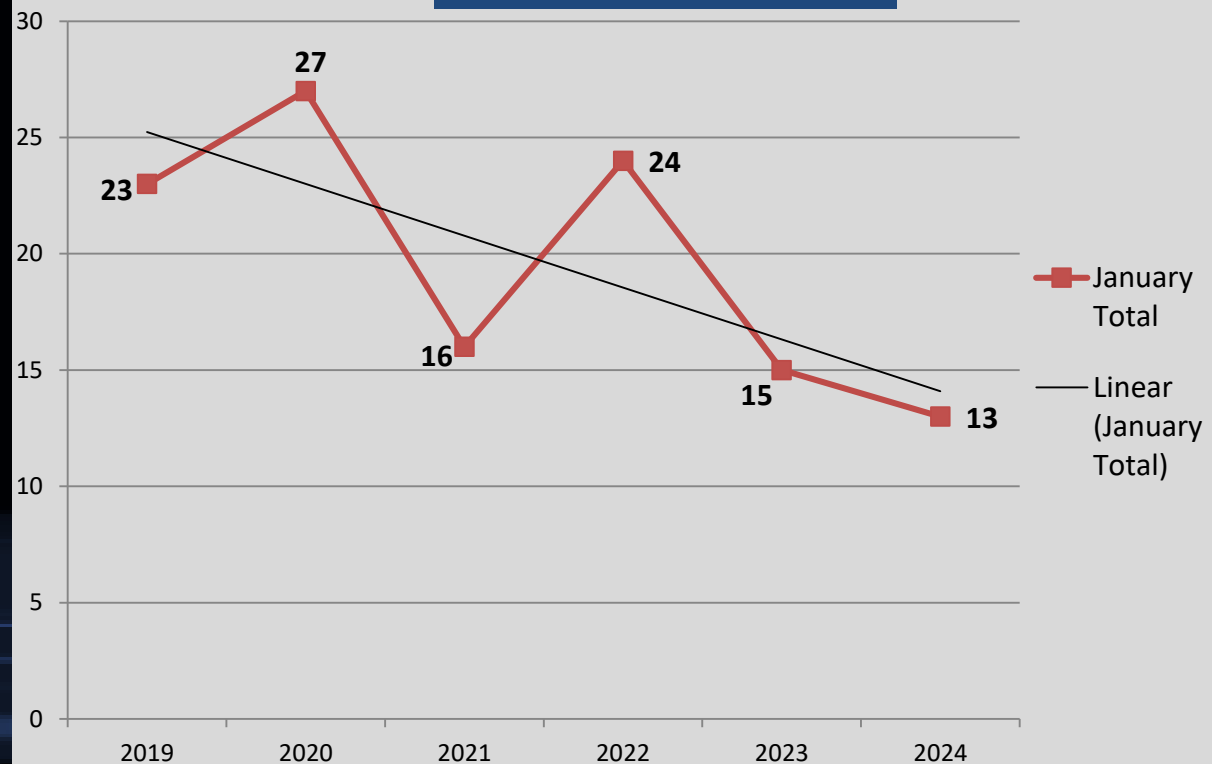
↓ **13%**

Compared to 5 Year Avg:

↓ **38%**

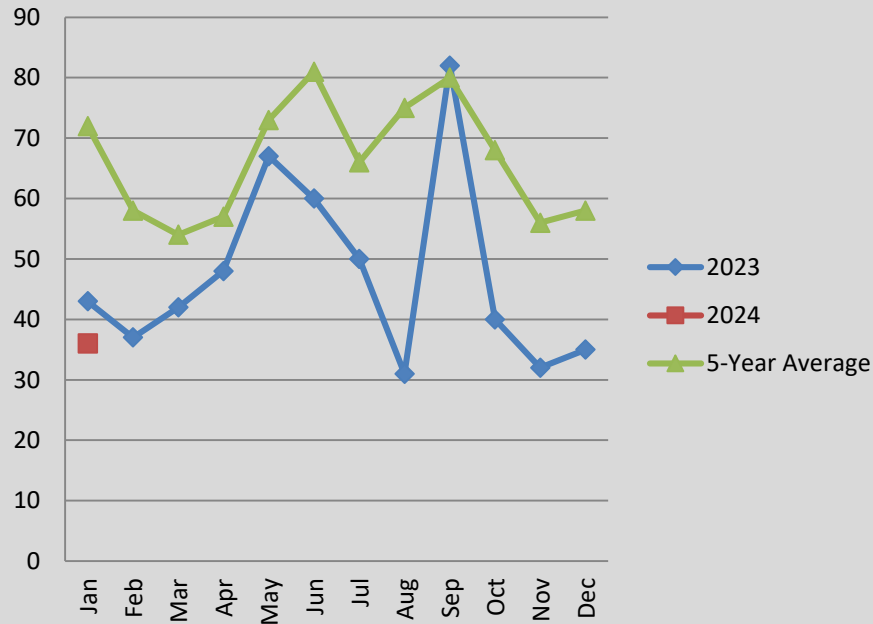
## Month of January Numbers 2019-2024

### Aggravated Assault

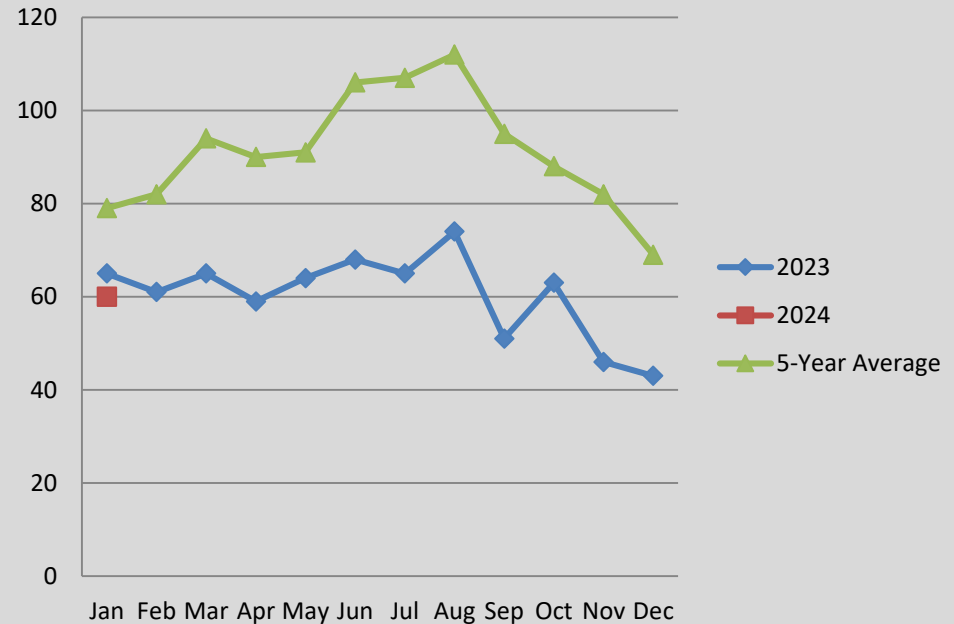


# A Closer Look: CHANGING CRIME TRENDS

## Crimes Against Person Comparison



## Crimes Against Property Comparison



The charts above help visualize the changing crime trends that we are seeing in Pittsfield, as well as what we may anticipate for the future.