

# Pittsfield Police Department CityStat

## June 2024

*Produced by the Crime Analysis Unit*



# Total Group A Crime

## 4 Weeks

## Year to Date

## 5 Year

	May-2024	Jun-2024	% Change		2023	2024	% Change		Average	% Change
Total Crimes Against Person	53	53	0%		299	236	-21%		81	-35%
Total Crimes Against Property	67	78	16%		392	376	-4%		106	-26%
Total Crimes Against Society	38	20	-47%		176	147	-16%		25	-20%
Total Group A Crime	158	151	-4%		867	759	-12%		212	-29%

# Crimes Against Person

	4 Week			Year to Date			5 Year	
	May-2024	Jun-2024	% Change	2023	2024	% Change	Average	% Change
Murder/ Nonnegligent Manslaughter	0	1	In Calc	0	1	In Calc	0	In Calc
Negligent Manslaughter	0	0	In Calc	0	0	In Calc	0	In Calc
Human Trafficking	0	0	In Calc	0	0	In Calc	0	In Calc
Kidnapping/ Abduction	0	0	In Calc	3	0	-100%	0	In Calc
Rape	6	4	-33%	26	18	-31%	3	33%
Fondling	0	0	In Calc	6	2	-67%	1	-100%
Consensual Sex Offenses	0	2	In Calc	9	3	-67%	1	100%
Aggravated Assault	25	26	4%	133	103	-23%	28	-7%
Simple Assault	14	16	14%	80	74	-8%	38	-58%
Intimidation	8	4	-50%	42	35	-17%	8	-50%
Total Crimes Against Person	53	53	0%	299	236	-21%	81	-35%

# Crimes Against Property

	4 Week			Year to Date			5 Year	
	May-2024	Jun-2024	% Change	2023	2024	% Change	Average	% Change
Arson	0	0	In Calc	1	1	0%	1	-100%
Bribery	0	0	In Calc	0	0	In Calc	0	In Calc
Burglary (B&E)	10	11	10%	69	63	-9%	24	-54%
Counterfeiting/Forgery	4	0	-100%	10	10	0%	3	-100%
Vandalism	18	28	56%	96	102	6%	31	-10%
Embezzlement	0	0	In Calc	2	1	-50%	1	-100%
Extortion/Blackmail	0	0	In Calc	0	1	In Calc	0	In Calc
Fraud Offenses	13	4	-69%	50	56	12%	10	-60%
Robbery	1	1	0%	16	10	-38%	4	-75%
Larceny (Total)	18	32	78%	121	117	-3%	28	14%
Theft from Building	0	2	In Calc	11	12	9%	3	-33%
Theft from Motor Vehicle	3	3	0%	23	18	-22%	3	0%
Theft from Person	0	0	In Calc	1	2	100%	1	-100%
Shoplifting	11	13	18%	31	46	48%	5	160%
Larceny- Miscellaneous	4	14	250%	55	39	-29%	16	-13%
Motor Vehicle Theft	2	2	0%	17	11	-35%	4	-50%
Stolen Property Offenses	1	0	-100%	10	4	-60%	2	-100%
Total Crimes Against Property	67	78	16%	392	376	-4%	106	-26%

# Crimes Against Society

	<u>4 Week</u>			<u>Year to Date</u>			<u>5 Year</u>	
	May-2024	Jun-2024	% Change	2023	2024	% Change	Average	% Change
Animal Cruelty	0	0	In Calc	0	0	In Calc	0	In Calc
Drug/Narcotic Offenses	21	10	-52%	105	77	-27%	18	-44%
Gambling Offenses	0	0	In Calc	0	0	In Calc	0	In Calc
Prostitution Offenses	0	0	In Calc	0	0	In Calc	0	In Calc
Weapon Law Violations	17	10	-41%	71	70	-1%	7	43%
Total Crimes Against Society	38	20	-47%	176	147	-16%	25	-20%

# A Closer Look: Crimes Against Person with Trendline

## Stat Recap:

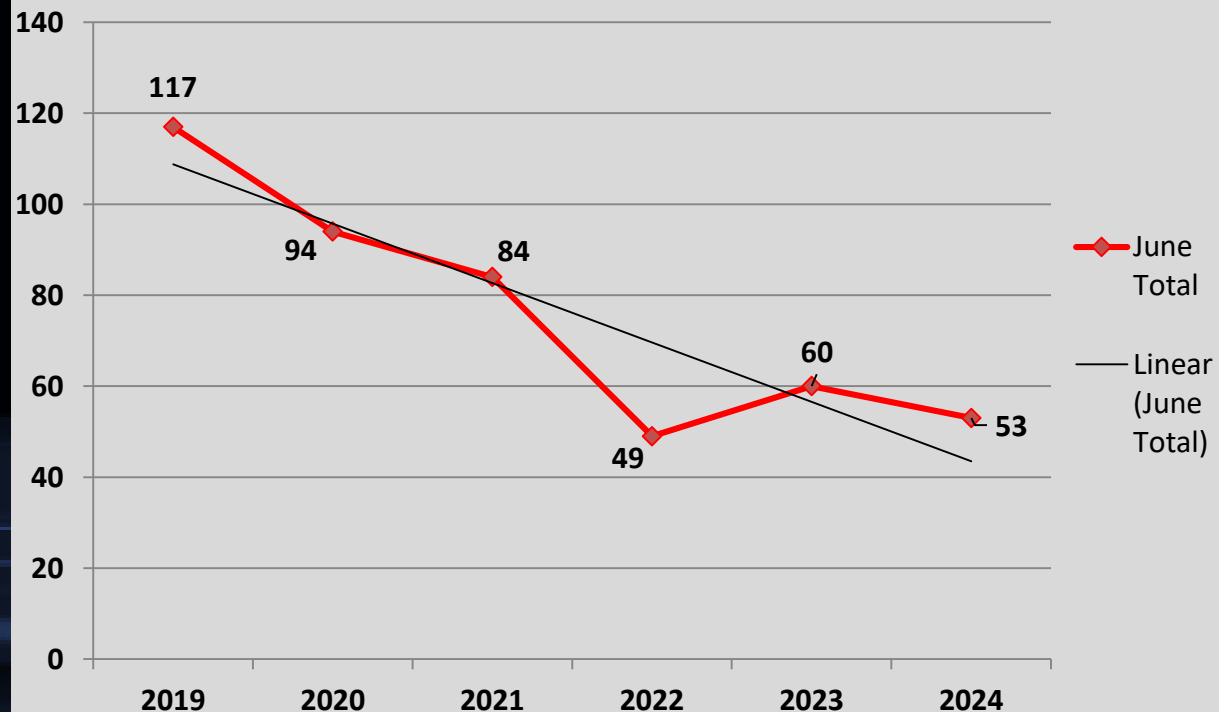
Since Last Month:  
0%

Compared to 2023  
Year-To-Date:  
↓ 21%

Compared to 5 Year Avg:  
↓ 35%

## Month of June Numbers 2019-2024

### Crimes Against Person



# A Closer Look: Crimes Against Property with Trendline

## Stat Recap:

Since Last Month:

↑ 16%

Compared to 2023  
Year-to-Date:

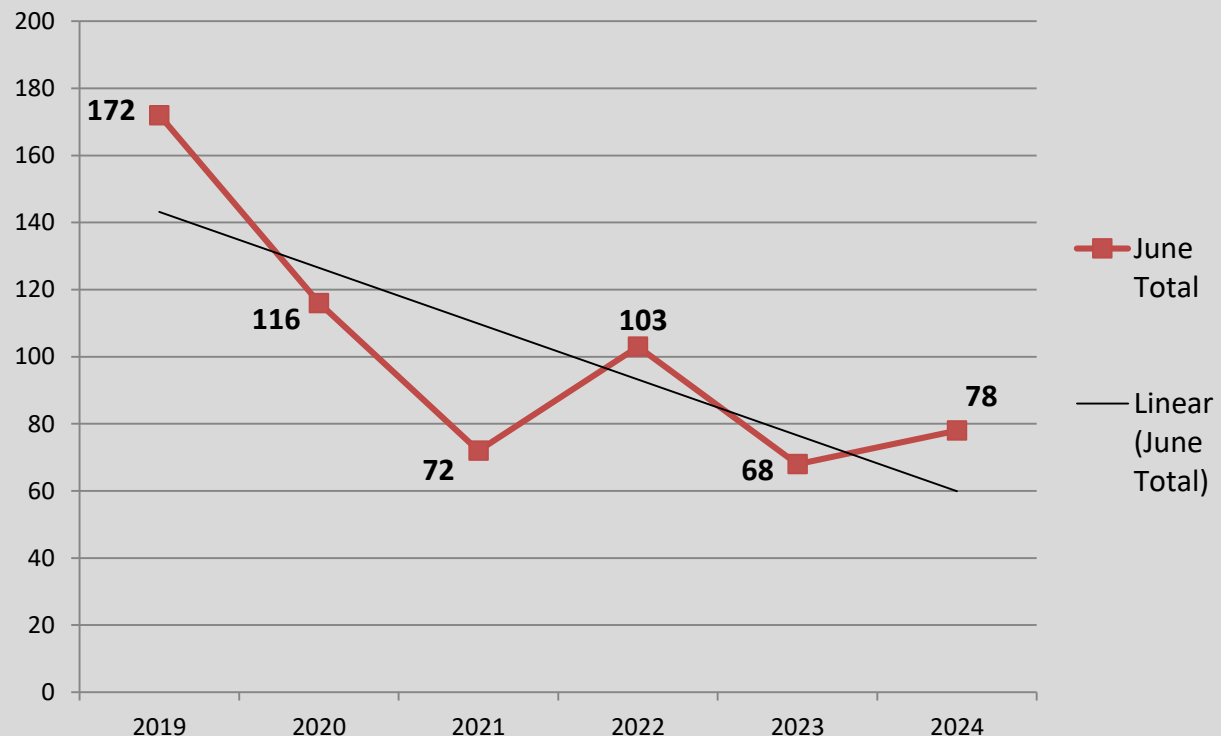
↓ 4%

Compared to 5 Year Avg:

↓ 26%

## Month of June Numbers 2019-2024

### Crimes Against Property



# A Closer Look: Crimes Against Society with Trendline

## Stat Recap:

Since Last Month:

↓ 47%

Compared to 2023  
Year-to-Date:

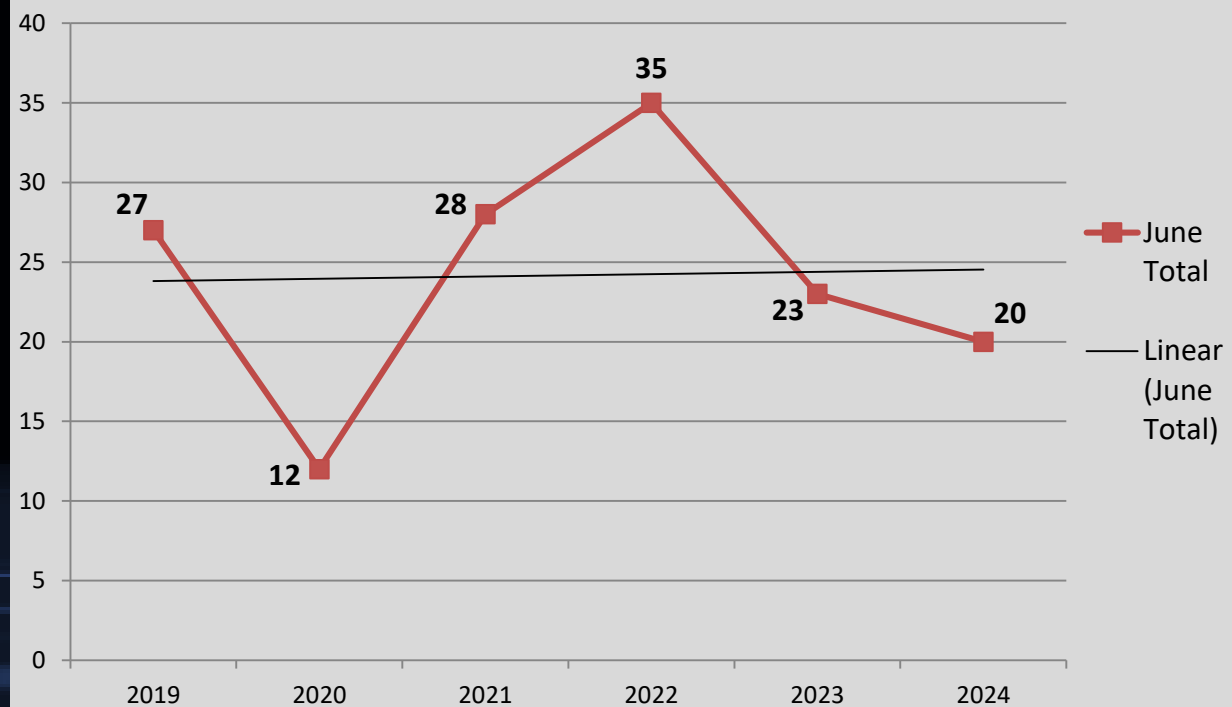
↓ 16%

Compared to 5 Year Avg:

↓ 20%

## Month of June Numbers 2019-2024

### Crimes Against Society





# A Closer Look: Burglary with Trendline

## Stat Recap:

Since Last Month:

↑ 10%

Compared to 2023  
Year-To-Date:

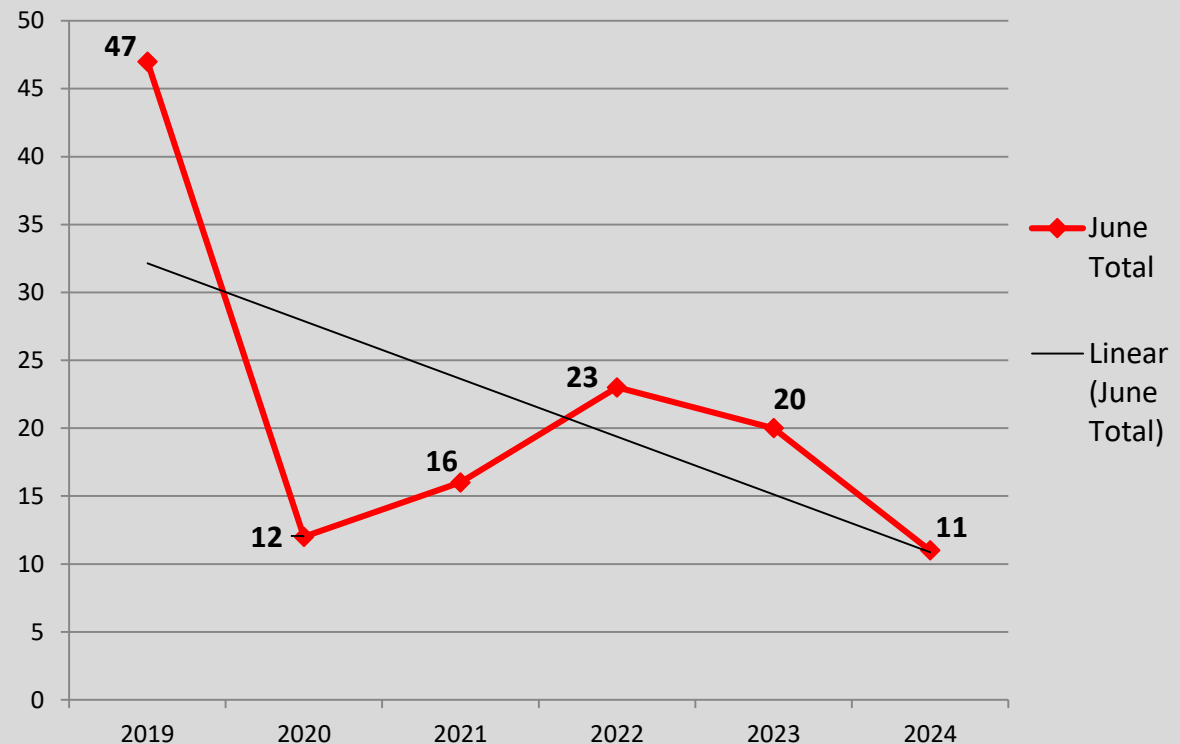
↓ 9%

Compared to 5 Year Avg:

↓ 54%

## Month of June Numbers 2019-2024

### Burglary



# A Closer Look: Larceny with Trendline

## Stat Recap:

Since Last Month:

↑ 38%

Compared to 2023  
Year-To-Date:

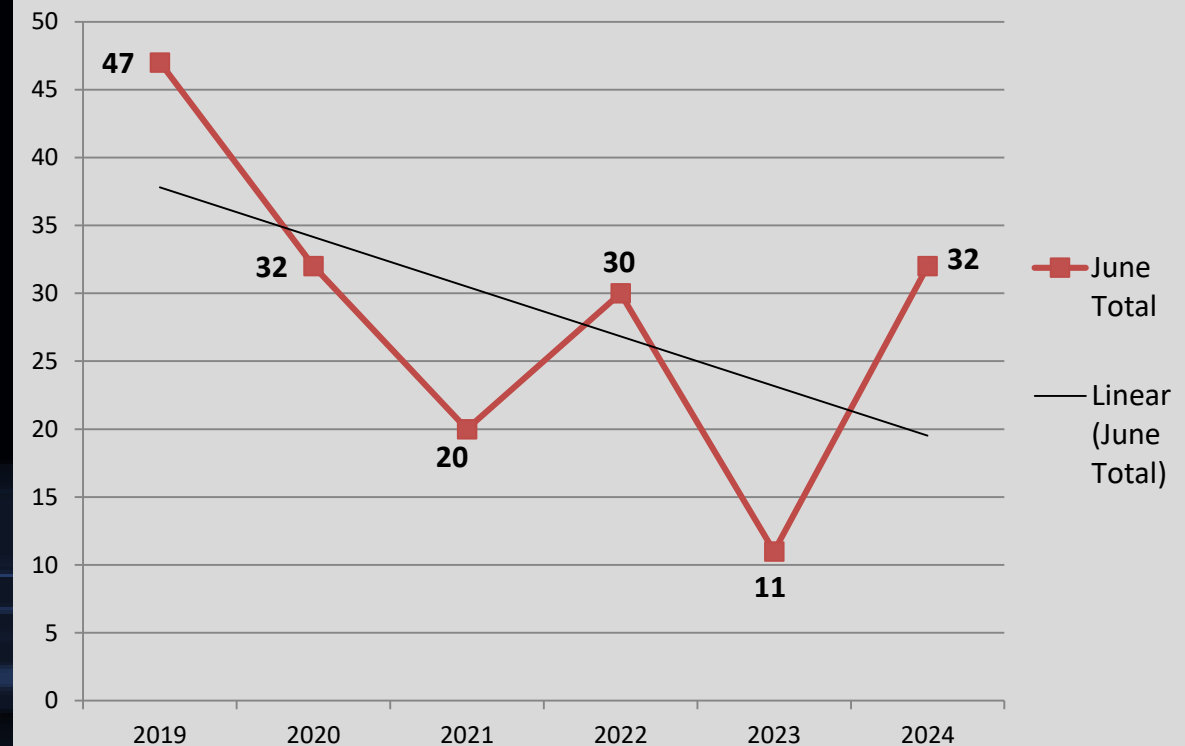
↓ 3%

Compared to 5 Year Avg:

↑ 14%

## Month of June Numbers 2019-2024

### Larceny



# A Closer Look: Aggravated Assault with Trendline

## Stat Recap:

Since Last Month:

↑ 4%

Compared to 2023  
Year-To-Date:

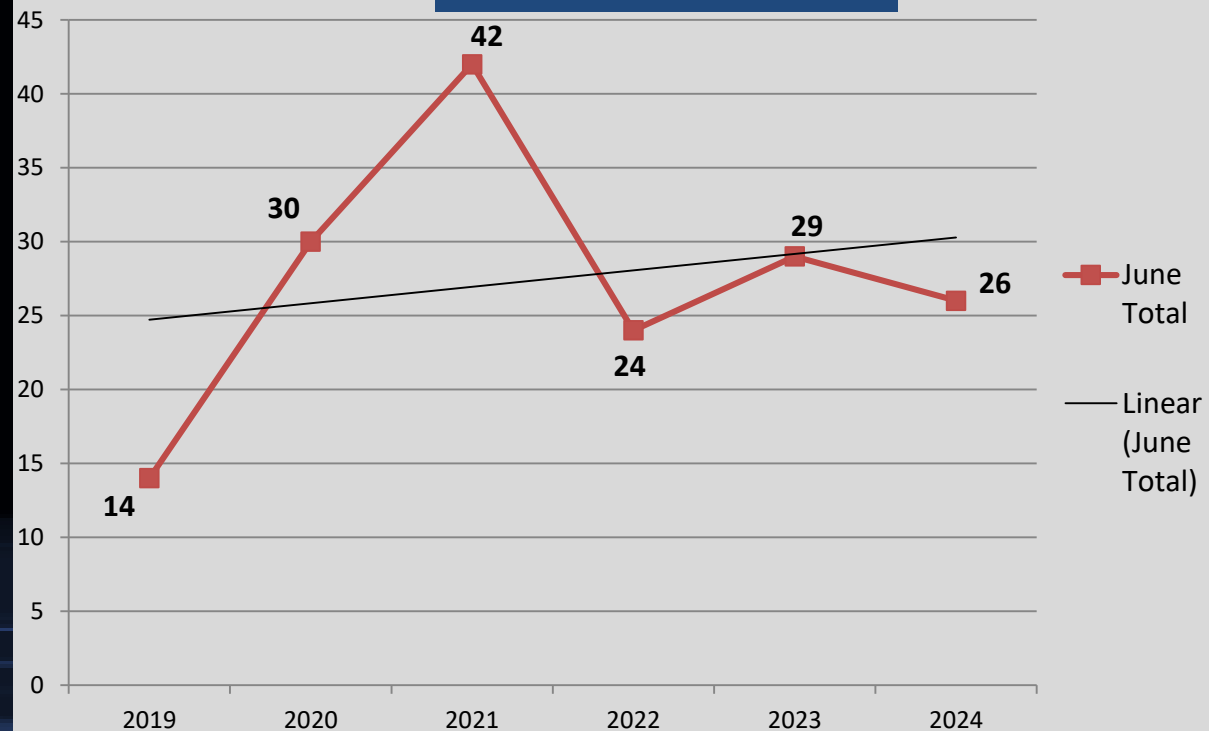
↓ 23%

Compared to 5 Year Avg:

↓ 7%

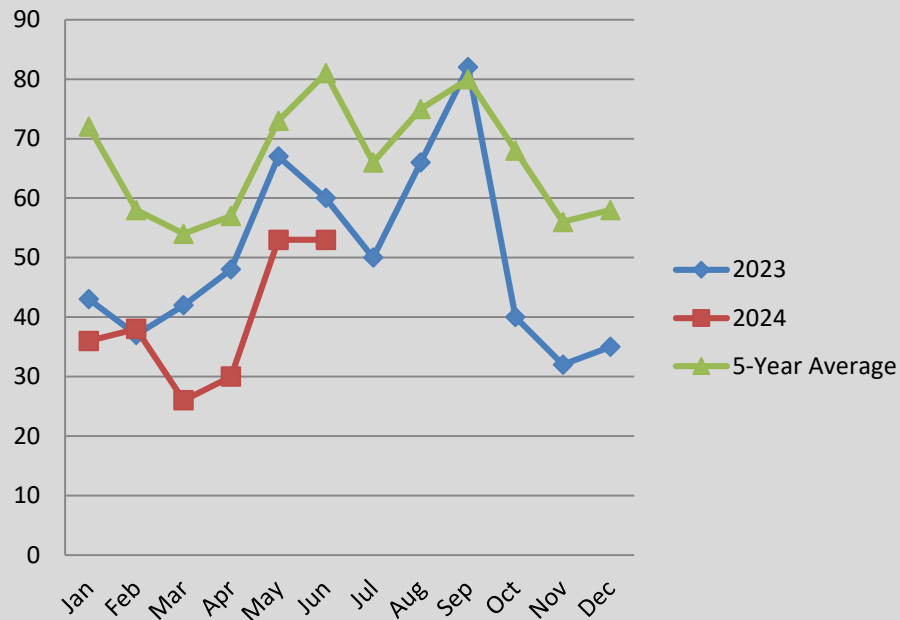
## Month of June Numbers 2019-2024

### Aggravated Assault

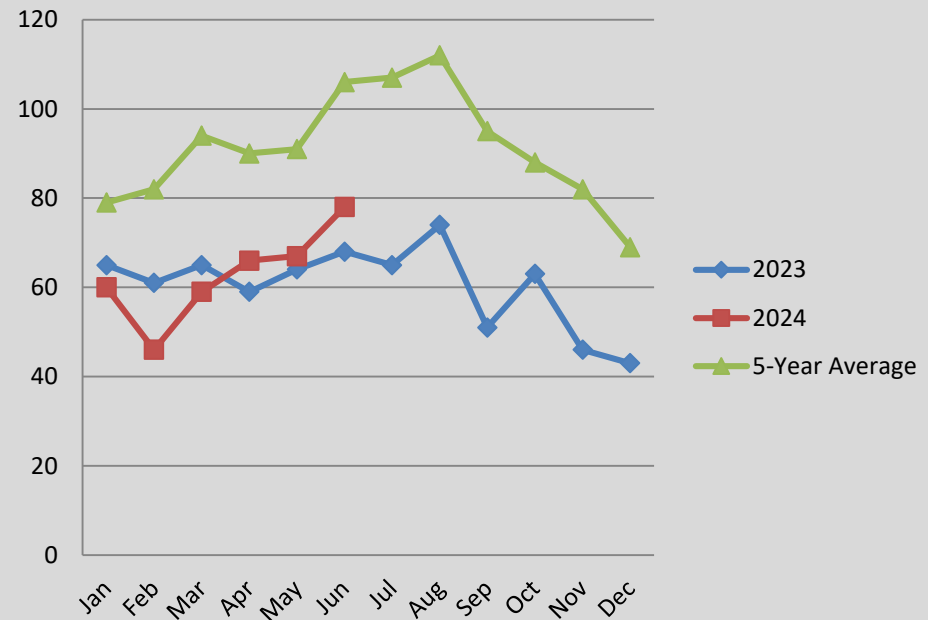


# A Closer Look: CHANGING CRIME TRENDS

## Crimes Against Person Comparison



## Crimes Against Property Comparison



The charts above help visualize the changing crime trends that we are seeing in Pittsfield, as well as what we may anticipate for the future.