

# Pittsfield Police Department CityStat

## July 2024

*Produced by the Crime Analysis Unit*



# Total Group A Crime

## 4 Weeks

## Year to Date

## 5 Year

	Jun-2024	Jul-2024	% Change		2023	2024	% Change		Average	% Change
Total Crimes Against Person	53	35	-34%		349	271	-22%		66	-47%
Total Crimes Against Property	78	54	-31%		456	430	-6%		107	-50%
Total Crimes Against Society	20	27	35%		198	174	-12%		20	35%
Total Group A Crime	151	116	-23%		1,003	875	-13%		193	-40%

# Crimes Against Person

	4 Week			Year to Date			5 Year	
	Jun-2024	Jul-2024	% Change	2023	2024	% Change	Average	% Change
Murder/ Nonnegligent Manslaughter	1	0	-100%	0	1	In Calc	0	In Calc
Negligent Manslaughter	0	0	In Calc	0	0	In Calc	0	In Calc
Human Trafficking	0	0	In Calc	0	0	In Calc	0	In Calc
Kidnapping/ Abduction	0	0	In Calc	3	0	-100%	0	In Calc
Rape	4	1	-75%	29	19	-34%	2	-50%
Fondling	0	0	In Calc	7	2	-71%	0	In Calc
Consensual Sex Offenses	2	4	100%	10	7	-30%	2	100%
Aggravated Assault	26	20	-23%	155	123	-21%	31	-35%
Simple Assault	16	5	-69%	96	79	-18%	21	-76%
Intimidation	4	5	25%	49	40	-18%	10	-50%
Total Crimes Against Person	53	35	-34%	349	271	-22%	66	-47%

# Crimes Against Property

	4 Week			Year to Date			5 Year	
	Jun-2024	Jul-2024	% Change	2023	2024	% Change	Average	% Change
Arson	0	0	In Calc	1	1	0%	1	-100%
Bribery	0	0	In Calc	0	0	In Calc	0	In Calc
Burglary (B&E)	11	4	-64%	78	67	-14%	23	-83%
Counterfeiting/Forgery	0	0	In Calc	17	10	-41%	4	-100%
Vandalism	28	16	-43%	114	118	4%	32	-50%
Embezzlement	0	0	In Calc	3	1	-67%	0	In Calc
Extortion/Blackmail	0	0	In Calc	0	1	In Calc	0	In Calc
Fraud Offenses	4	14	250%	59	70	19%	11	27%
Robbery	1	0	-100%	18	10	-44%	3	-100%
Larceny (Total)	32	17	-47%	136	134	-1%	28	-39%
Theft from Building	2	0	-100%	11	12	9%	2	-100%
Theft from Motor Vehicle	3	5	67%	24	23	-4%	3	67%
Theft from Person	0	0	In Calc	1	2	100%	0	In Calc
Shoplifting	13	6	-54%	39	52	33%	6	0%
Larceny- Miscellaneous	14	6	-57%	61	45	-26%	17	-65%
Motor Vehicle Theft	2	3	50%	17	14	-18%	3	0%
Stolen Property Offenses	0	0	In Calc	13	4	-69%	1	-100%
Total Crimes Against Property	78	54	-31%	456	430	-6%	107	-50%

# Crimes Against Society

	4 Week			Year to Date			5 Year	
	Jun-2024	Jul-2024	% Change	2023	2024	% Change	Average	% Change
Animal Cruelty	0	0	In Calc	0	0	In Calc	0	In Calc
Drug/Narcotic Offenses	10	20	100%	112	97	-13%	10	100%
Gambling Offenses	0	0	In Calc	0	0	In Calc	0	In Calc
Prostitution Offenses	0	0	In Calc	0	0	In Calc	0	In Calc
Weapon Law Violations	10	7	-30%	86	77	-10%	11	-36%
Total Crimes Against Society	20	27	35%	198	174	-12%	20	35%

# A Closer Look: Crimes Against Person with Trendline

## Stat Recap:

Since Last Month:

↓ 34%

Compared to 2023  
Year-To-Date:

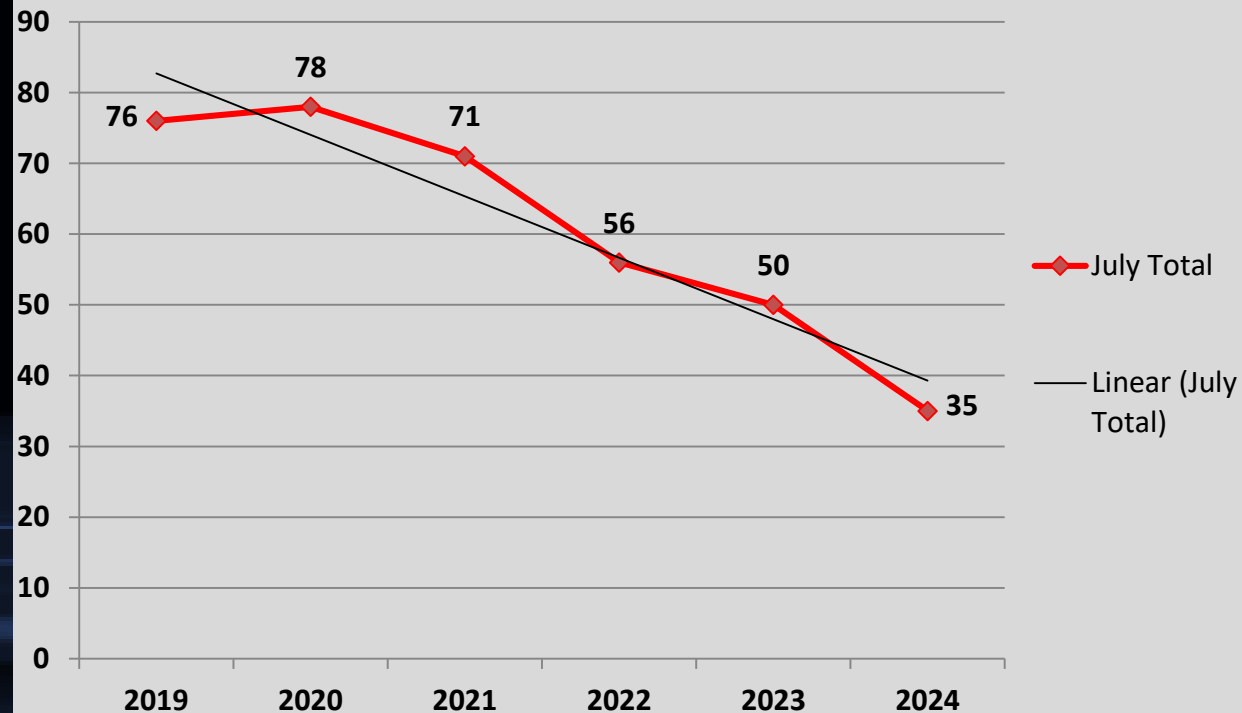
↓ 22%

Compared to 5 Year Avg:

↓ 47%

## Month of July Numbers 2019-2024

### Crimes Against Person



# A Closer Look: Crimes Against Property with Trendline

## Stat Recap:

Since Last Month:

↓ 31%

Compared to 2023  
Year-to-Date:

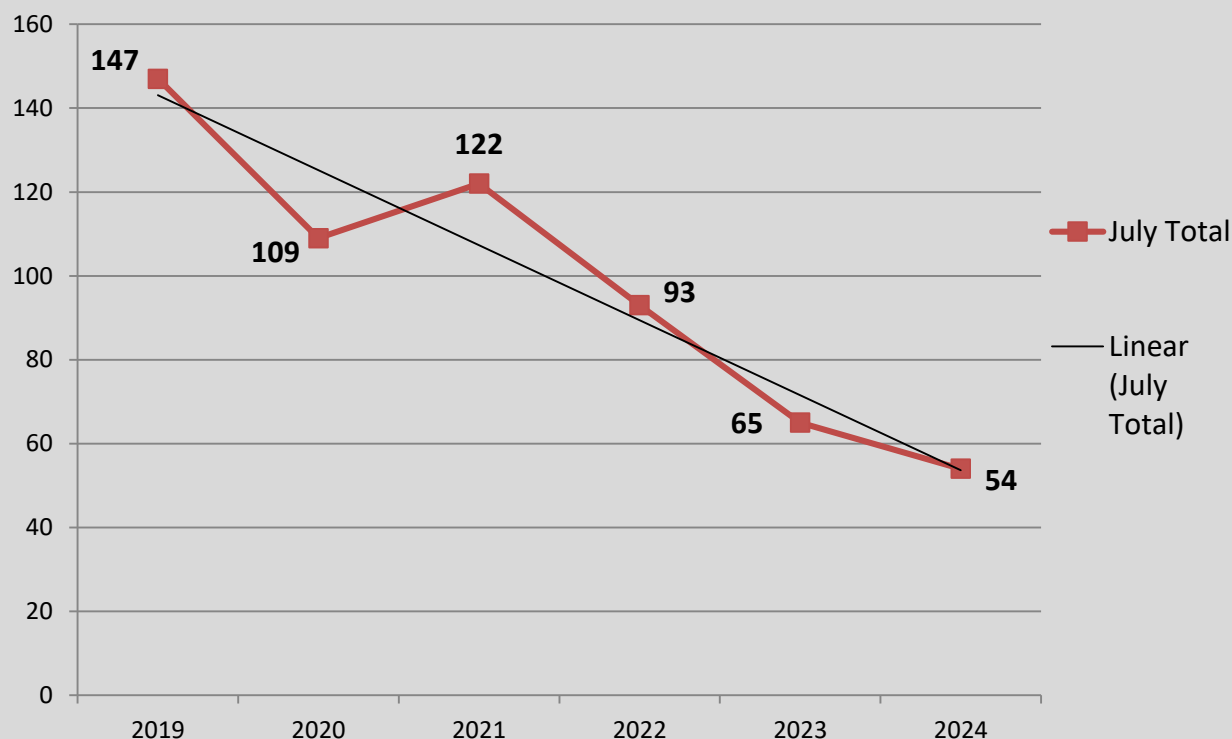
↓ 6%

Compared to 5 Year Avg:

↓ 50%

## Month of July Numbers 2019-2024

### Crimes Against Property



# A Closer Look: Crimes Against Society with Trendline

## Stat Recap:

Since Last Month:

↑ 35%

Compared to 2023  
Year-to-Date:

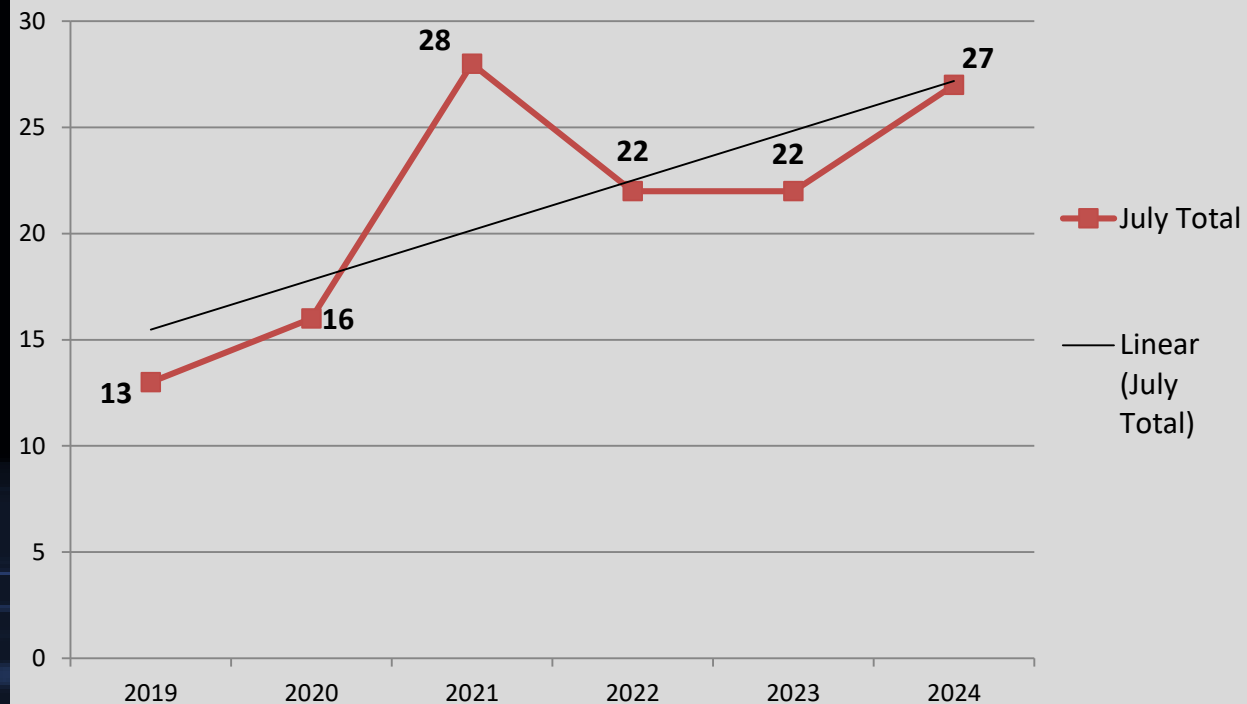
↓ 12%

Compared to 5 Year Avg:

↑ 35%

## Month of July Numbers 2019-2024

### Crimes Against Society





# A Closer Look: Burglary with Trendline

## Stat Recap:

Since Last Month:

↓ 64%

Compared to 2023  
Year-To-Date:

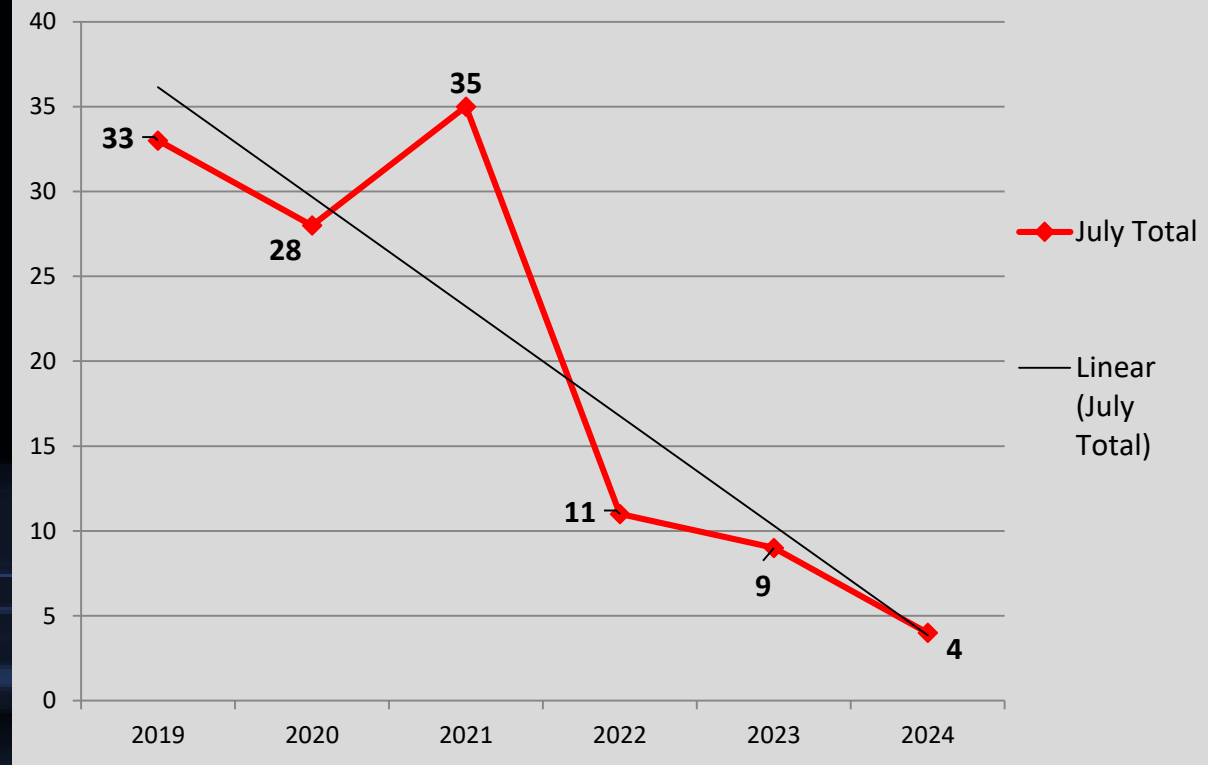
↓ 14%

Compared to 5 Year Avg:

↓ 83%

## Month of July Numbers 2019-2024

### Burglary



# A Closer Look: Larceny with Trendline

## Stat Recap:

Since Last Month:

↓ 47%

Compared to 2023  
Year-To-Date:

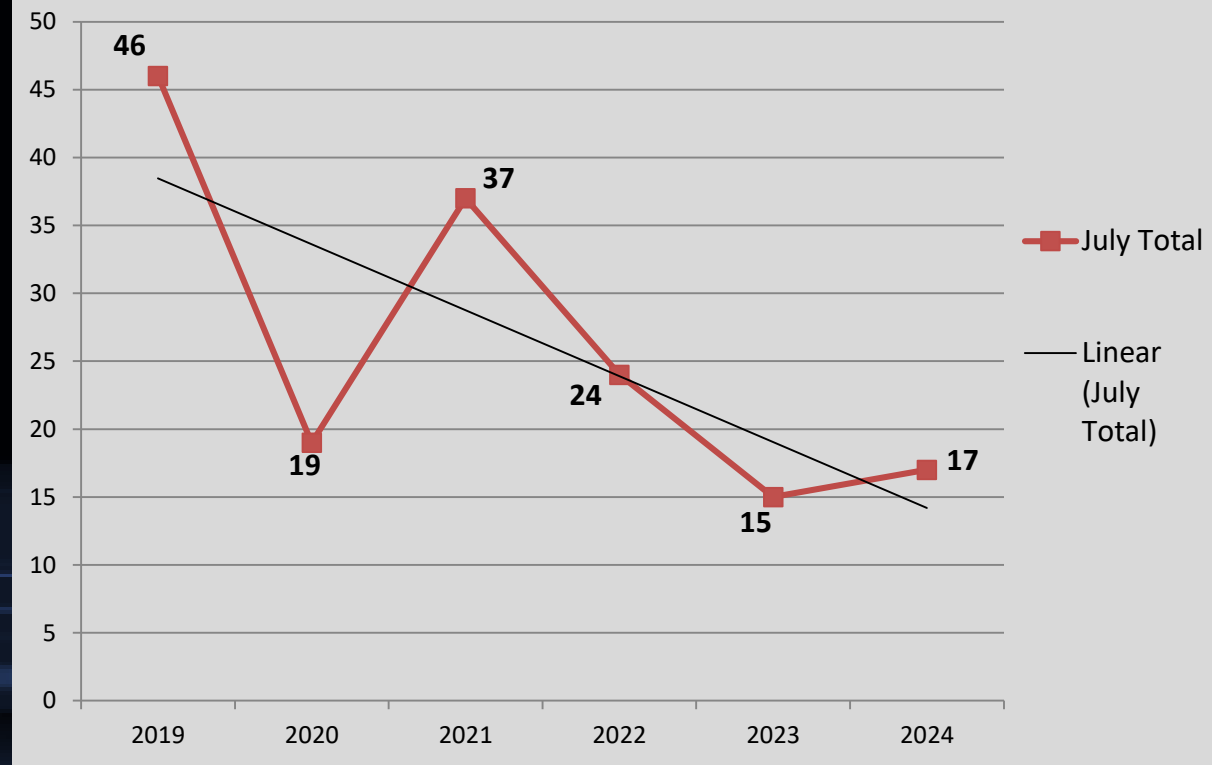
↓ 1%

Compared to 5 Year Avg:

↓ 39%

## Month of July Numbers 2019-2024

### Larceny



# A Closer Look: Aggravated Assault with Trendline

## Stat Recap:

Since Last Month:

↓ 23%

Compared to 2023  
Year-To-Date:

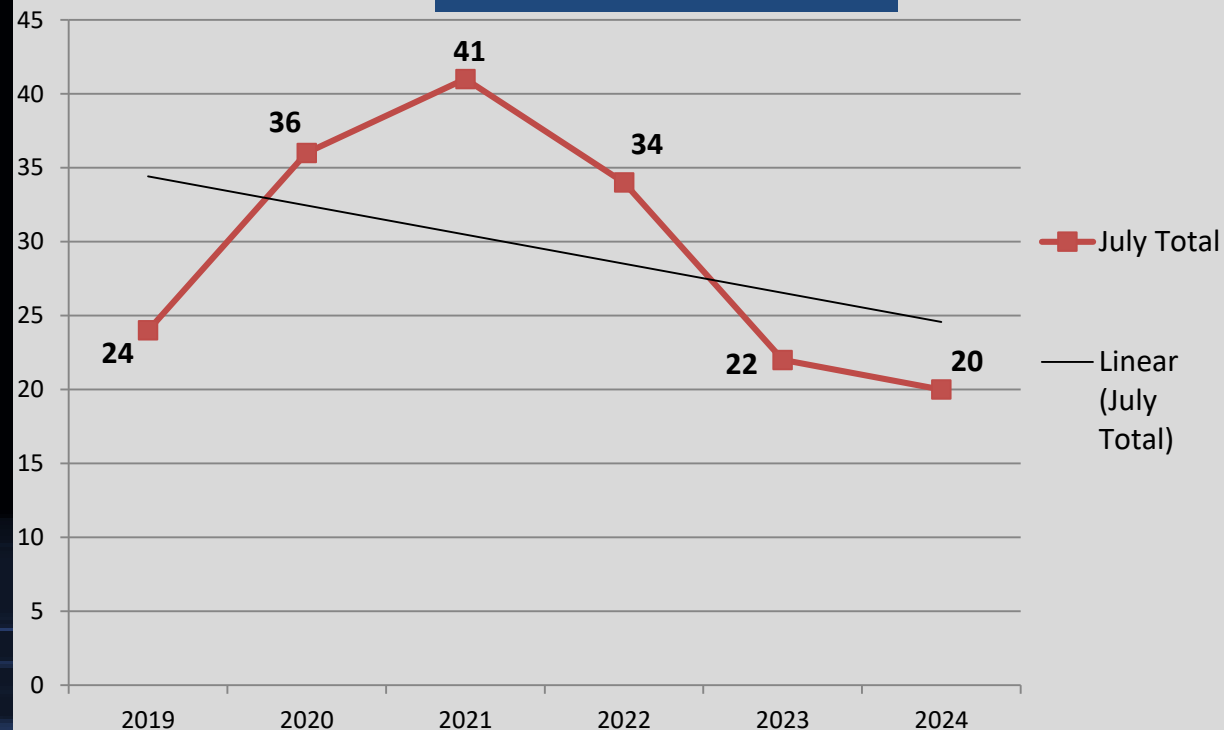
↓ 21%

Compared to 5 Year Avg:

↓ 35%

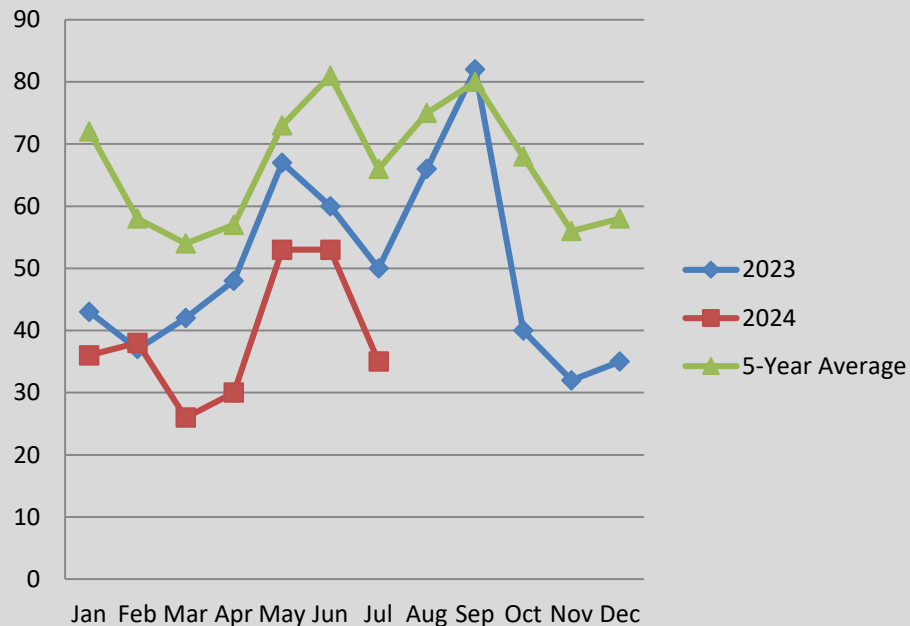
## Month of July Numbers 2019-2024

### Aggravated Assault

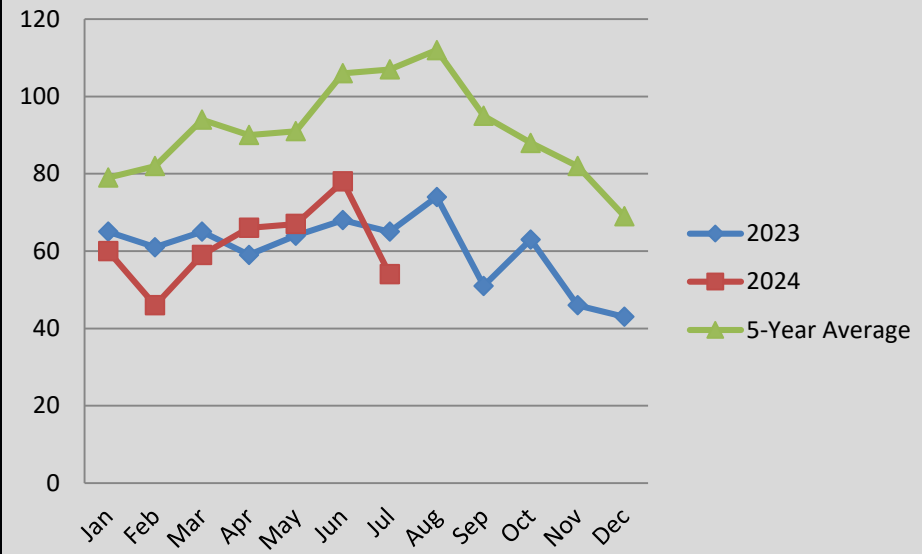


# A Closer Look: CHANGING CRIME TRENDS

## Crimes Against Person Comparison



## Crimes Against Property Comparison



The charts above help visualize the changing crime trends that we are seeing in Pittsfield, as well as what we may anticipate for the future.