

Pittsfield Police Department CityStat

August 2024

Produced by the Crime Analysis Unit



Total Group A Crime

4 Weeks

Year to Date

5 Year

	Jul-2024	Aug-2024	% Change		2023	2024	% Change		Average	% Change
Total Crimes Against Person	35	40	14%		415	311	-25%		75	-47%
Total Crimes Against Property	54	71	31%		530	501	-5%		112	-37%
Total Crimes Against Society	27	23	-15%		234	197	-16%		22	5%
Total Group A Crime	116	134	16%		1,179	1,009	-14%		209	-36%

Crimes Against Person

	4 Week			Year to Date			5 Year	
	Jul-2024	Aug-2024	% Change	2023	2024	% Change	Average	% Change
Murder/ Nonnegligent Manslaughter	0	0	In Calc	0	1	In Calc	0	In Calc
Negligent Manslaughter	0	0	In Calc	0	0	In Calc	0	In Calc
Human Trafficking	0	0	In Calc	0	0	In Calc	0	In Calc
Kidnapping/ Abduction	0	0	In Calc	3	0	-100%	0	In Calc
Rape	1	5	200%	30	24	-20%	3	67%
Fondling	0	0	In Calc	7	2	-71%	1	-100%
Consensual Sex Offenses	4	2	-75%	11	9	-18%	1	100%
Aggravated Assault	20	15	45%	186	138	-26%	29	-48%
Simple Assault	5	12	460%	118	91	-23%	28	-57%
Intimidation	5	6	180%	60	46	-23%	14	-57%
Total Crimes Against Person	35	40	14%	415	311	-25%	75	-47%

Crimes Against Property

	4 Week			Year to Date			5 Year	
	Jul-2024	Aug-2024	% Change	2023	2024	% Change	Average	% Change
Arson	0	0	In Calc	2	1	-50%	1	-100%
Bribery	0	0	In Calc	0	0	In Calc	0	In Calc
Burglary (B&E)	4	15	275%	91	82	-10%	25	-40%
Counterfeiting/Forgery	0	0	In Calc	19	10	-47%	4	-100%
Vandalism	16	21	31%	134	139	4%	30	-30%
Embezzlement	0	0	In Calc	3	1	-67%	0	In Calc
Extortion/Blackmail	0	0	In Calc	0	1	In Calc	0	In Calc
Fraud Offenses	14	8	-43%	65	78	20%	9	-11%
Robbery	0	2	In Calc	21	12	-43%	3	-33%
Larceny (Total)	17	20	18%	162	154	-5%	35	-43%
Theft from Building	0	0	In Calc	12	12	0%	4	-100%
Theft from Motor Vehicle	5	5	0%	29	28	-3%	4	25%
Theft from Person	0	0	In Calc	1	2	100%	1	-100%
Shoplifting	6	9	50%	53	61	15%	12	-25%
Larceny- Miscellaneous	6	6	0%	67	51	-24%	14	-57%
Motor Vehicle Theft	3	3	0%	19	17	-11%	4	-25%
Stolen Property Offenses	0	2	In Calc	14	6	-57%	1	100%
Total Crimes Against Property	54	71	31%	530	501	-5%	112	-37%

Crimes Against Society

	<u>4 Week</u>			<u>Year to Date</u>			<u>5 Year</u>	
	Jul-2024	Aug-2024	% Change	2023	2024	% Change	Average	% Change
Animal Cruelty	0	0	In Calc	0	0	In Calc	0	In Calc
Drug/Narcotic Offenses	20	4	-80%	128	101	-21%	10	-60%
Gambling Offenses	0	0	In Calc	0	0	In Calc	0	In Calc
Prostitution Offenses	0	0	In Calc	0	0	In Calc	0	In Calc
Weapon Law Violations	7	19	171%	106	96	-9%	11	73%
Total Crimes Against Society	27	23	-15%	234	197	-16%	22	5%

A Closer Look: Crimes Against Person with Trendline

Stat Recap:

Since Last Month:

↑ 14%

Compared to 2023
Year-To-Date:

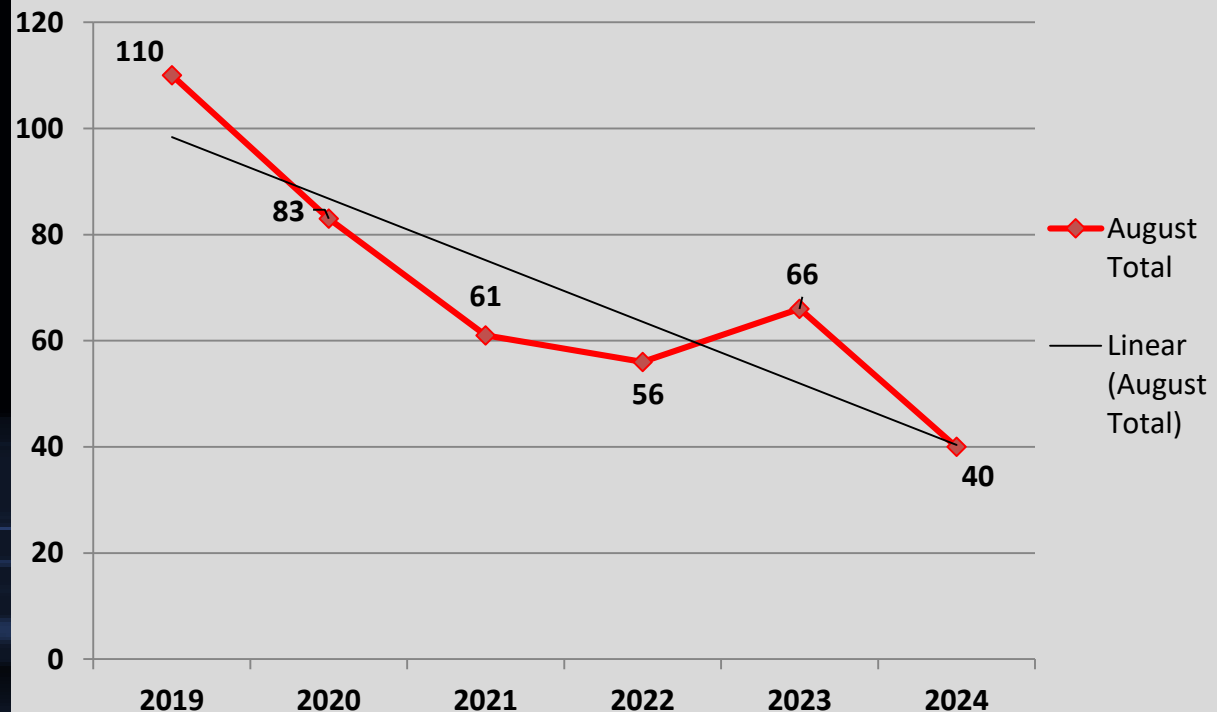
↓ 25%

Compared to 5 Year Avg:

↓ 47%

Month of August Numbers 2019-2024

Crimes Against Person



A Closer Look: Crimes Against Property with Trendline

Stat Recap:

Since Last Month:

↑ 31%

Compared to 2023
Year-to-Date:

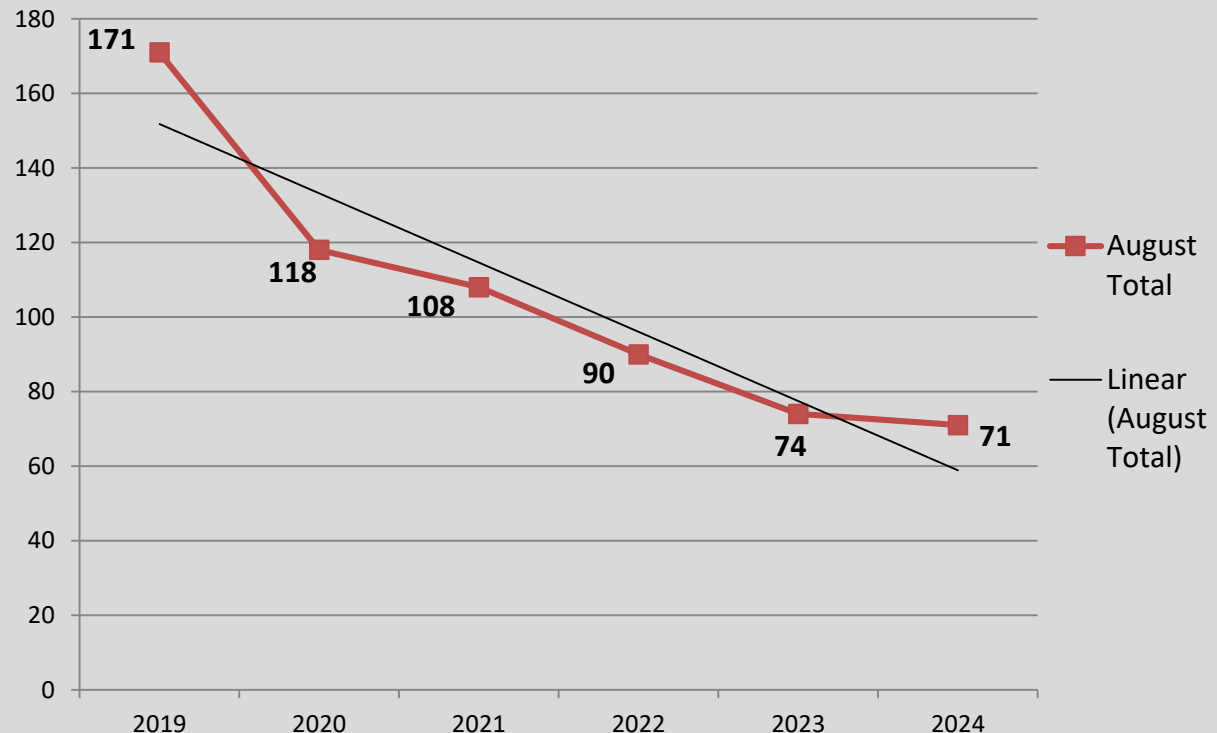
↓ 5%

Compared to 5 Year Avg:

↓ 37%

Month of August Numbers 2019-2024

Crimes Against Property



A Closer Look: Crimes Against Society with Trendline

Stat Recap:

Since Last Month:

↓ 15%

Compared to 2023
Year-to-Date:

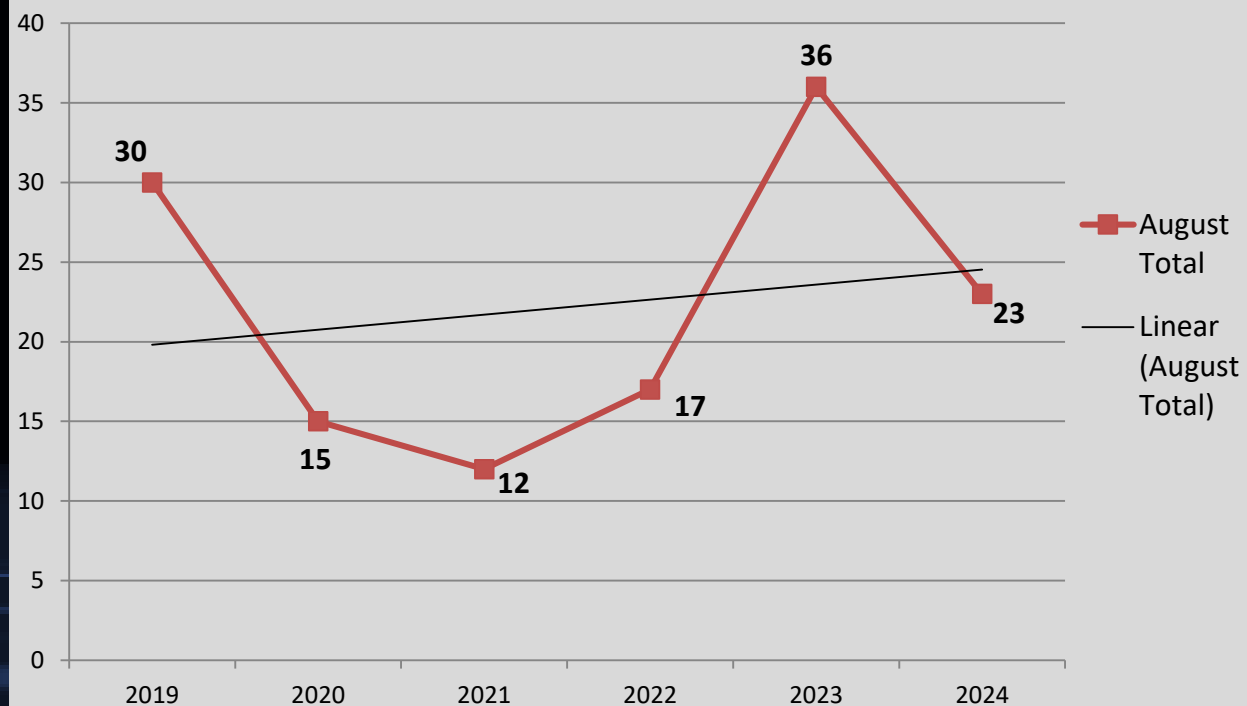
↓ 16%

Compared to 5 Year Avg:

↑ 5%

Month of August Numbers 2019-2024

Crimes Against Society



A Closer Look: Burglary with Trendline

Stat Recap:

Since Last Month:

↑ 275%

Compared to 2023
Year-To-Date:

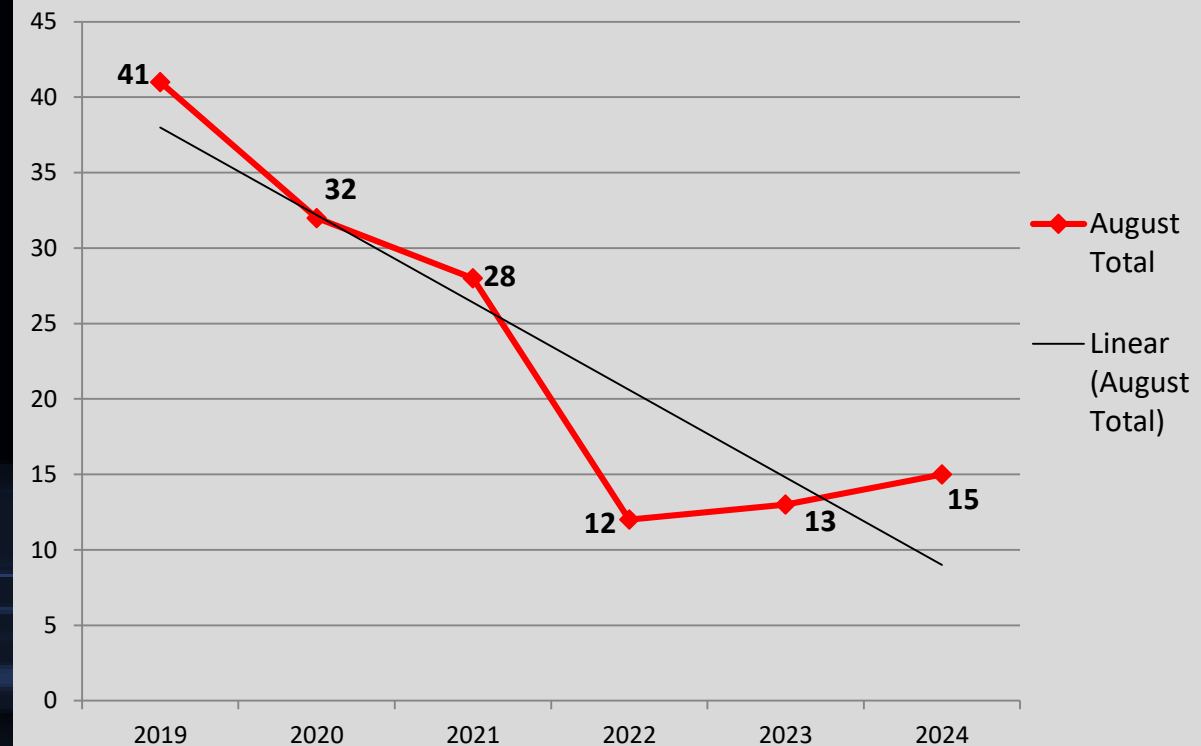
↓ 10%

Compared to 5 Year Avg:

↓ 40%

Month of August Numbers 2019-2024

Burglary



A Closer Look: Larceny with Trendline

Stat Recap:

Since Last Month:

↑ 18%

Compared to 2023
Year-To-Date:

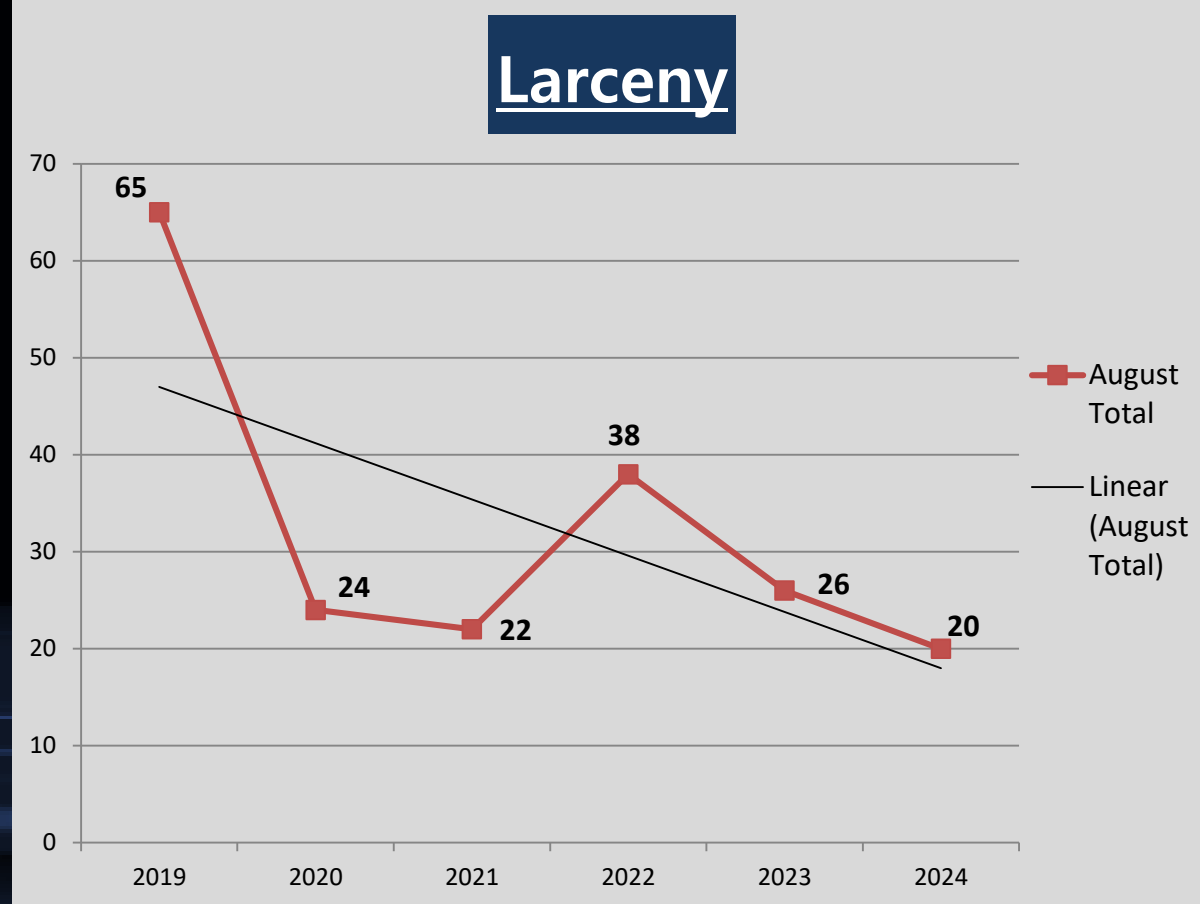
↓ 5%

Compared to 5 Year Avg:

↓ 43%

Month of August Numbers 2019-2024

Larceny



A Closer Look: Aggravated Assault with Trendline

Stat Recap:

Since Last Month:

↑ 45%

Compared to 2023
Year-To-Date:

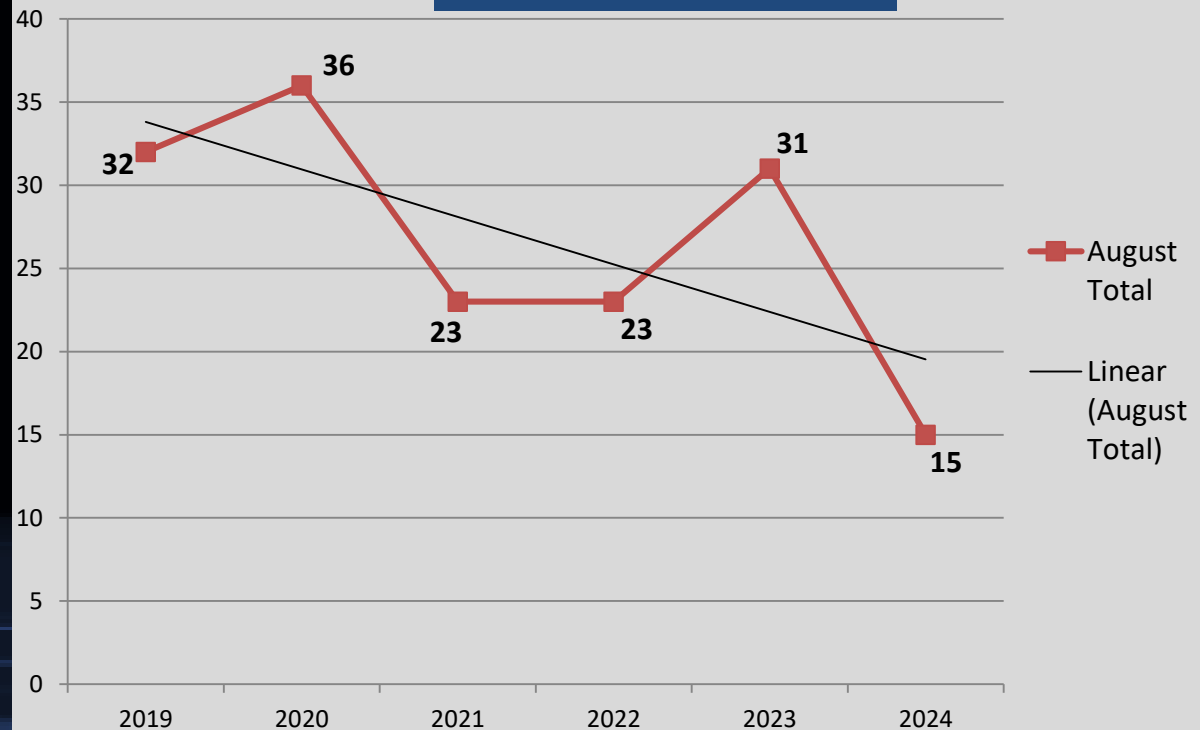
↓ 26%

Compared to 5 Year Avg:

↓ 48%

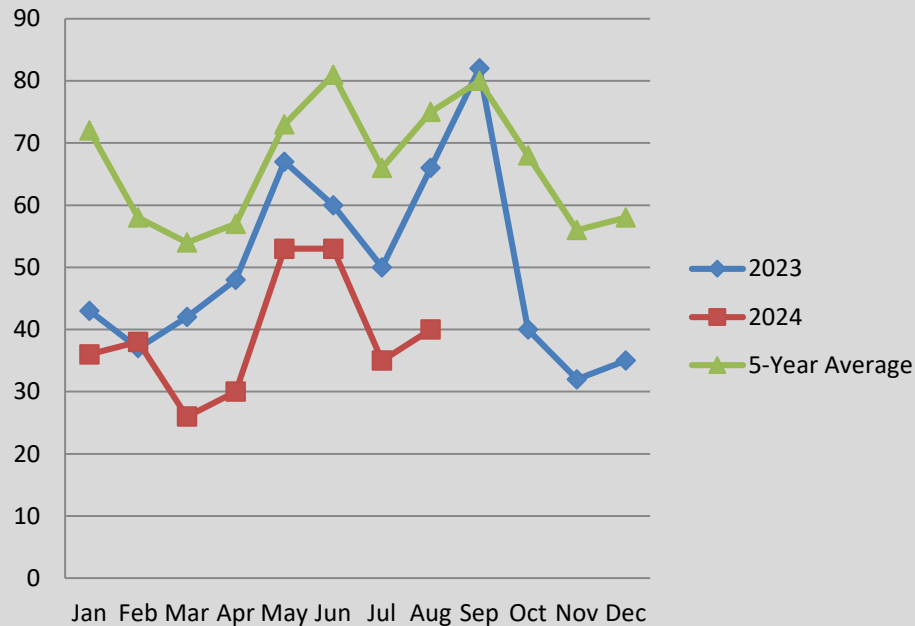
Month of August Numbers 2019-2024

Aggravated Assault

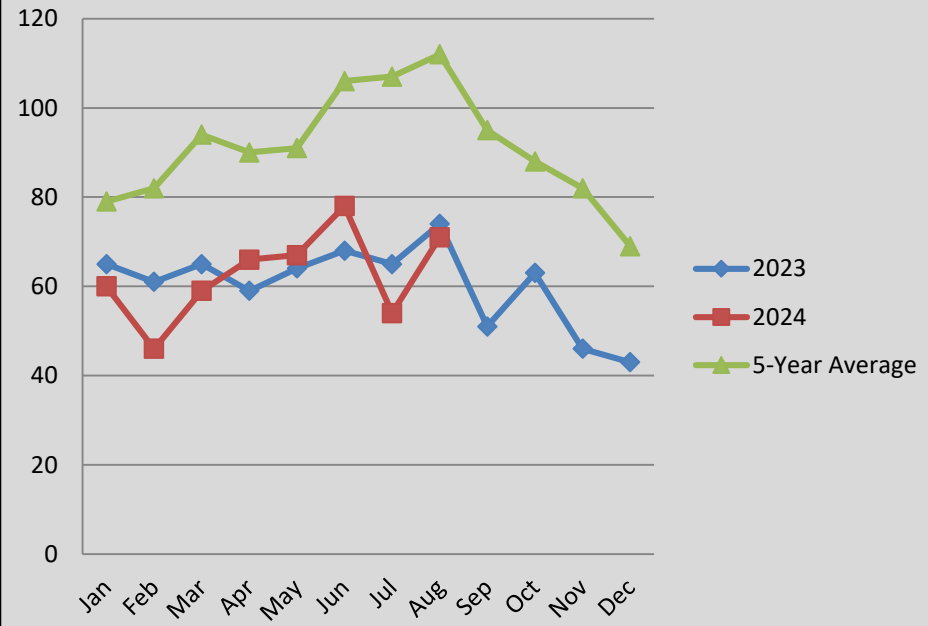


A Closer Look: CHANGING CRIME TRENDS

Crimes Against Person Comparison



Crimes Against Property Comparison



The charts above help visualize the changing crime trends that we are seeing in Pittsfield, as well as what we may anticipate for the future.